



sixteen3



Hello.

We are a specialist designer and manufacturer of stylish, high quality, upholstered seating, perfectly suited to enhancing any environment.

Located in Warrington, Cheshire, we are well situated to serve clients throughout the UK and have considerable experience and expertise in delivering solutions globally.

Our in-house design and upholstery teams, have extensive vision, knowledge and capability in developing and manufacturing furniture to the highest specification, whether from our standard product range or to solve one-off or bespoke requirements.

Alongside our in-house manufactured range of soft seating we also supply a selection of complementary products, including tables and chairs, to complete your workplace requirements.

We believe good environmental practices go hand in hand with good product quality and we always endeavour to source from environmentally accredited, sustainable sources and from other UK manufacturers.

Get in touch if you would like to visit our showrooms, either at our manufacturing site in Warrington or Clerkenwell, London.



Tel: 01925 850500 **Email:** info@sixteen3.co.uk **Web:** www.sixteen3.co.uk

London Showroom:
The Gallery
21-22 Great Sutton Street
Clerkenwell
EC1V 0DY

Manufacture/Showroom:
3a Chesford Grange
Woolston, Warrington
Cheshire
WA1 4RQ

Soft Seating:

Army p.6



Army
Adytum p.8



Army Lite p.11



Adytum
Space p.16



Circe p.22



Newton p.26



Gilbert p.28



Toraja p.32



Erik p.34



Kim p.34



Odyssey p.40



Breathe p.42



George p.44



Erno p.46



Fuse p.50



Blake p.56



Spencer p.60



Tyler p.62



Pop p.64



Geode p.66



Hex p.68



Lithos
Lounge p.70



Link p.72



Accessories:

Power p.76



Icarus p.78



Laptop Table p.79



Scatter Cushion p.80



Lithos Cushion p.81



Chairs:

Lloyd p.82



Freya p.84



Erin p.86



Aaron p.88



Tables:

Erno p.90



Newton p.91



Erik p.92



Gilbert p.93



George p.94



Options p.96



Wharf p.98



Lithos Tables p.99



Hex Tables p.99



Army



Arny



A bold, comfortable sofa range
with a strong angular aesthetic.



Arny Adytum





An extension of the **Army** family.
The addition of privacy panels creates
enclosed areas in open-plan spaces.

Army Adytum



**Army
Adytum**



Army Lite





Taking visual cues from its older brother **Army**, **Army Lite** has a compact footprint allowing for use in the tightest of spaces. A more formal seating position makes the range ideal for the workplace.

Arny Lite



Army
Life



Adytum Space

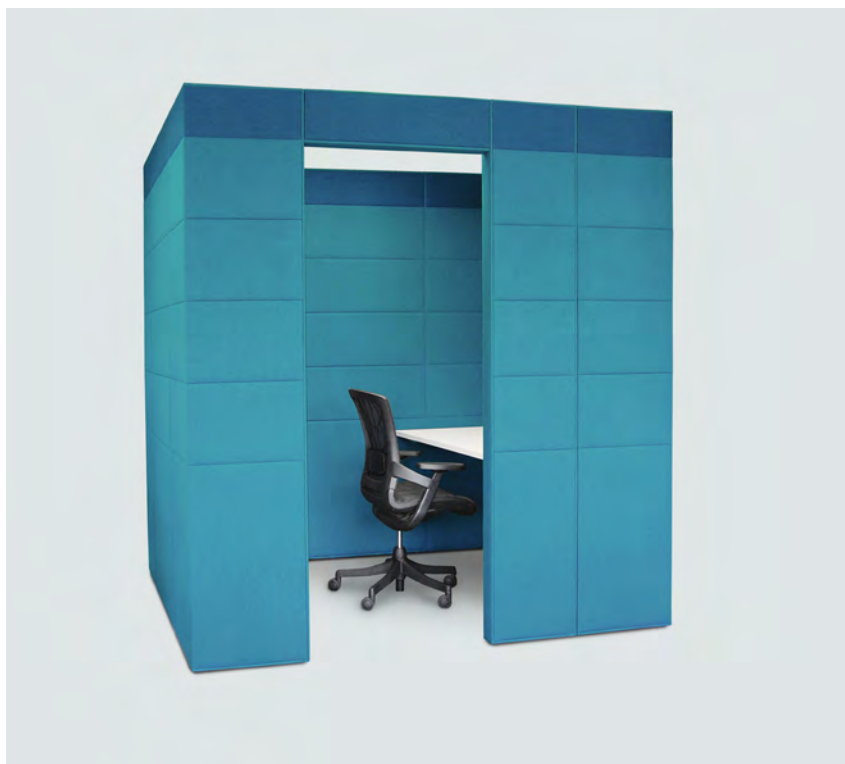


Adytum Space



Adytum Space is a flexible, fully upholstered space division system that allows you to create the collaborative and breakout spaces you need.

Adytum Space



Adytum
Space



Adytum Space



Adytum Space



The addition of table tops allows for the creation of semi-enclosed workbooths, drop-in and hotdesking setups.



Circe





A contemporary modular sofa system, designed to create alternative seating landscapes.

Circe



Modular system allows endless configurations using standard components, with three angles of corner unit allowing 'open' or 'enclosed' seating arrangements.

Addition of Low or High panels provide an element of privacy and diffuse open spaces.



Circe



Newton



Newton



A modern, clean-lined sofa range with an adaptable personality. Two leg frame styles offer different looks, with frames finished in the option of steel or wood.

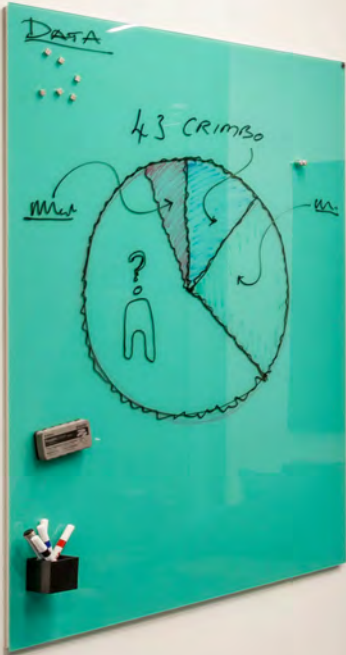
Gilbert





A contemporary seating and coffee table collection with strong retro styling. Two backrest heights & optional armrest and button detailing. Solid wood legs available in beech, oak or painted finishes.

Gilbert





Toraja





A classic casual sofa. This simple, traditionally constructed range has a soft welcoming appearance and offers unparalleled comfort through its webbed seat and fibre-filled loose cushions.

Erik





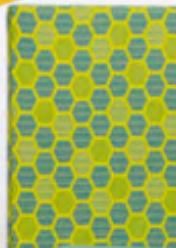
A simple, Scandinavian inspired aesthetic combines with a high level of comfort and practicality in this stylish seating and table range. Three back heights, solid wood, metal or upholstered leg detail and the option of buttoning to the backs allow the range to be tailored for any situation.

Erik





Kim





Paired back, stylish low-slung lounge chair.
Swivel star base in polished or painted finish.

Base detail suites in with **George** table range.

Odyssey



Odyssey



Perfectly proportioned and expertly tailored lounge chair, offering both comfort and style.

Available in two back height options, with swivel star base in polished or black finish.

Breathe



Breathe



Good looks and unparalleled comfort combine in this lounge chair range to offer a seating solution for a wide host of environments. Perfectly at home in both leisure and work spaces, in groups or individually.

Available in two back heights, on a swivel star base in polished or black finish, or on wooden legs in a range of timber or lacquered options.

George





Sinuous organic curves give this lounge chair its distinct look, making a strong aesthetic statement in groups of individually. High or low back versions.

Star base in polished or painted finish.

Base detail suites in with **George** table range.

Erno





A highly modular sofa system with a strong rectilinear aesthetic. The powder coated steel legs offer an industrial look, whilst the option of wooden legs and button detailing to the back soften the overall appearance.

Coordinating tables complete the range.

Erno





Fuse

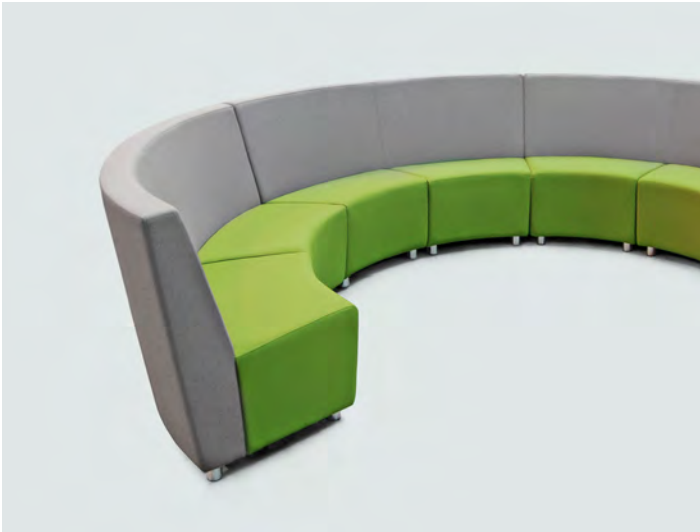




An extensively versatile modular seating system, with straight or curved options offering solutions for a wide range of interiors. Backrests available at four different heights, in vertical or angled versions. Rear fixed drop-in desks and booth setups add to the versatility.

Legs in metal or wood. Option of button-back detail.





Fuse





Blake



Blake



A chair for any occasion, from breakout to boardroom. The stylish and extremely comfortable seat shell can be used with any of seven different base options, in numerous finishes, to meet the requirements of almost any environment.



Blake



Blake



Spencer



Spencer



A simple seat shell with clean lines and tailored upholstery makes this versatile chair perfect for meeting, breakout and lounge areas. The option of spider, 4-star height adjustable, pedestal or wire skid bases further adds to the flexibility.



An angular aesthetic typifies the **Tyler** chair range, making it a stylish statement piece in meeting, breakout and lounge areas. A wooden four leg frame or the option of metal spider or pedestal bases offer a variety of looks.

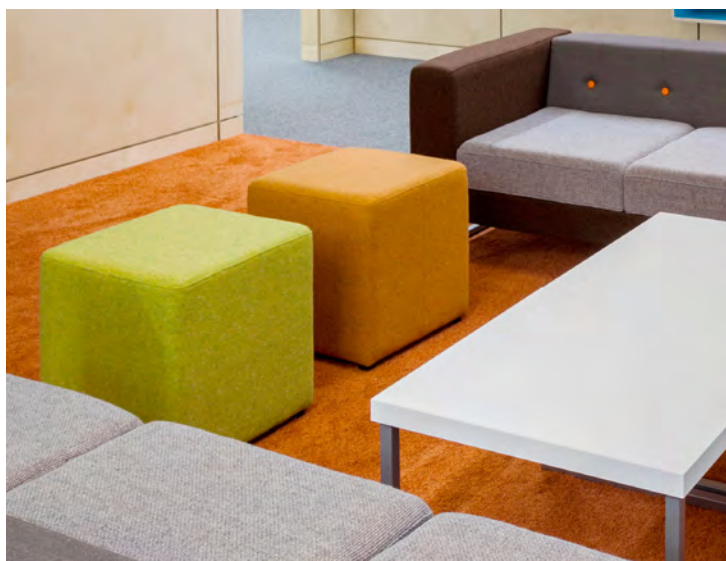
Pop



Pop



Simple shapes make for these playful and practical fully upholstered seats. Use in groups to create fun and adaptable spaces, or specify in conjunction with other ranges to provide additional seating in lounge and breakout areas. Available in round, square and rectangular shapes in various sizes. Optional button detail adds a **Pop** of colour.



Geode



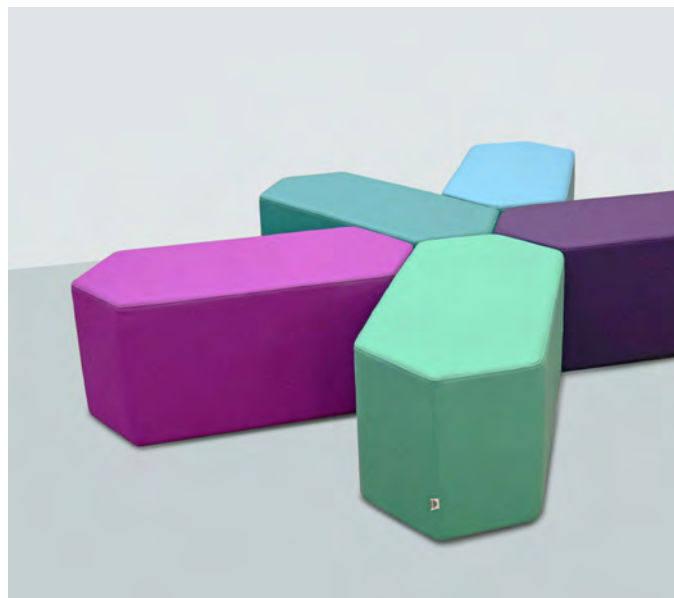
Geode



Inspired by geological geometry the two sizes of **Geode** chevron can work together to create tessolating patterns and formations, or used individually as casual and flexible seating.

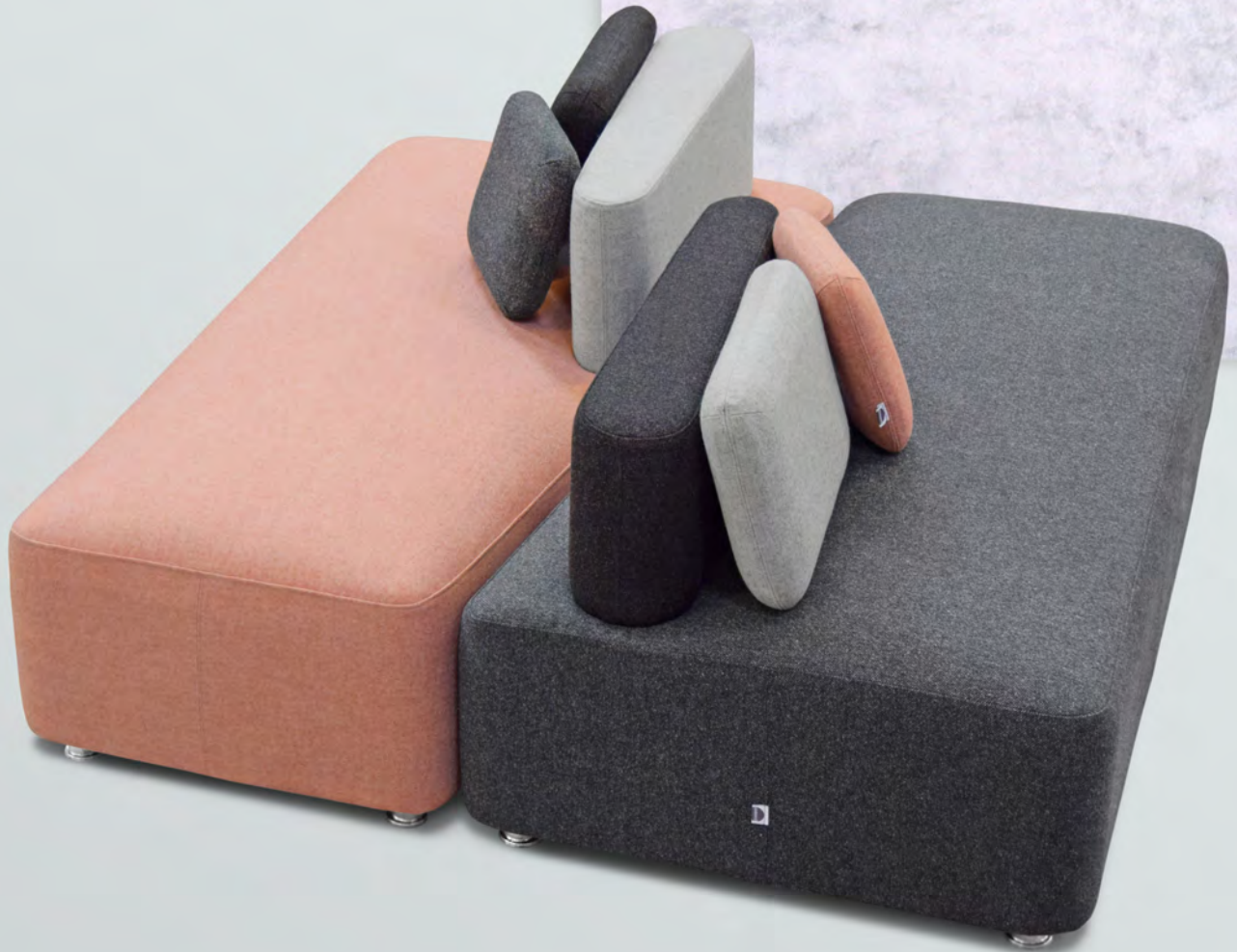
Hex





Taking its visual cues from nature, distilled into geometric simplicity, the Hex range can take on numerous environments. Can be used individually as additional flexible seating with a twist, or used in groups to provide larger landscapes. Combining the different heights creates environments influenced by the rock formations of the Giant's Causeway.

Lithos Lounge



Lithos Lounge



Smooth organic shapes nestle together to form seating areas. Ideal used in groups in large open spaces or individually as casual statement pieces. The loose cushions padded seats further add to the aesthetic of visual softness.

Link

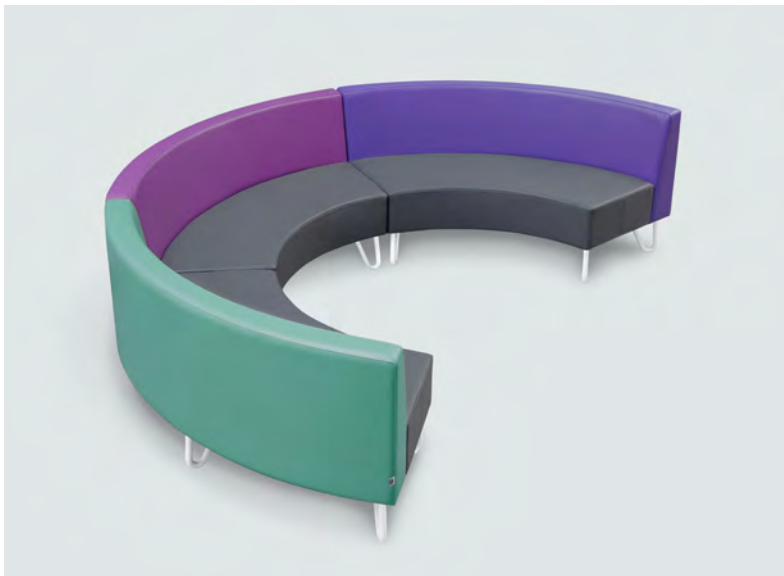




A flexible, modular seating system defined by clean lines and a compact footprint. Curved or straight units, with or without backrests and armrests, can be combined to fit in almost any environment. The unique metal leg detail, and the option of button detailing and integrated power modules further enhance both the visual and practical aspects.

Link





Power Modules



Power Modules



A further element of functionality can be added to a wide range of products by integrating power modules. From standard power sockets, to USB charging, image or data inputs or even wireless Qi charging.

Icarus



The stylish and agile **Icarus** table works alongside most seating options, providing a useful and practical surface, ideal for casual work or breakout areas.

Available in a tactile matt black or white finish as standard. Custom colours available on request.

Laptop Table



A simple and robust table, ideal for laptop use when paired with soft seating. The height adjustable stem allows for greater user comfort and flexibility.

Available in with a black, white or polished metal base with laminate top in white, black or walnut finish.

Scatter Cushions



Soft, fibre-filled cushions complement almost any soft seating range, and can be used to add a casual aesthetic as well as enhancing comfort.

Available in two sizes, with optional button detailing.

Lithos Cushions



These distinctive, organically shaped cushions needn't be restricted to the **Lithos Lounge** seating range, and are well suited to add an element of colour and form to alternative seating ranges.

Available in two sizes, with optional button detailing.



Lloyd





A soft, tactile polyurethane seat shell in an array of colours combined with numerous base options in metal or wood make for a high quality, stylish cafe and break-out chair range.

Upholstered seat pads or fully upholstered shells further enhance the offering.

Freya



Freya



Versatile and durable stacking chair, well suited to café, breakout, meeting and auditorium use.

The polypropylene shell is available in 6 different colourways with the option of upholstered seat pad or fully upholstered seat & back. Side chairs, armchairs and stools in two different heights are available in wire or tubular steel four-leg versions .

Erin





A simple wooden chair and stool range with a visual lightness and simple, minimal form.

The legs and seat shell in beech can be finished in a clear or walnut lacquer or painted to any RAL colour. The addition of upholstery further enhances the overall look, giving a tailored appearance.

Aaron



Aaron



A stylish wooden chair with a nod to retro forms.

Made of beech, the chair and stool range can be finished in a clear or walnut lacquer or painted to any RAL colour. Adding the well styled seat pad enhances both appearance and comfort.

Erno Tables



Designed to complement the **Erno** sofa range but equally at home used with a variety of seating.

Available in three different sizes, it's reductive form is defined by the simple steel powder coated legs balanced with a chunky laminate top in white, walnut or oak finishes.

Newton Tables



Part of the **Newton** family, with a simple stylish form.

Available in three different sizes, with powder coated steel frames offset with tops in either laminate or glass.

Laminate tops in white, walnut or oak. Glass tops in clear, frosted or back painted finishes on request.



Erik Tables



Using the same style of wood or metal legs as the **Erik** seating range, this collection of coffee tables, in round or square versions in various sizes, follows with the paired-back Scandinavian aesthetic.

Powder coated tops offer a tactile and seam free finish. Available in white or black as standard. Other colour options on request.

Gilbert Tables



The stylish tapered wooden legs of the **Gilbert** seating family extends to this versatile coffee and side table collection.

Legs available in beech, oak, black or white as standard or lacquered in any RAL colour. Powder coated tops offer a tactile and seam free finish in white or black as standard. Other colour options on request.



George Tables



George Tables



The cruciform base of this table range perfectly coordinates with the George & Kim chairs, but equally compliments a wide range of products and styles.

Available as coffee, standard and poseur heights, with bases in polished or painted finishes. Round or square laminate tops in white, walnut or oak, with straight or chamfered edge detail.

Options Tables



George Tables



A simplistic and minimal pedestal table range with a slender elegance in its proportions.

Available as coffee, standard and poseur heights, with bases in a powder coated finish.

Round, square and rectangular tops.

Laminate in white, walnut or oak, with straight or chamfered edge detail. Glass in clear or frosted finishes.

Wharf



A versatile coffee table with a bright polished spider-style metal base.

Available in round or square versions.
Laminate in white, walnut or oak, with straight or chamfered edge detail. Glass in clear or frosted finishes, with back-painted option available on request.

Lithos Tables



Mimicking the shapes of the **Lithos Lounge** seating range, the **Lithos** tables are small, versatile fully upholstered tables with powder coated tops.

Tops available in white or black as standard, or in custom colours on request.

Hex Tables



Designed to integrate with the **Hex** seating family, these tables are available in different heights with either a pedestal base or an upholstered plinth body.

The powder coated tops are available in white or black as standard, or in custom colours on request.



Notes:

Fabric & Leather finishes:

sixteen3 work with leading UK and international fabric and leather manufacturers to offer an extensive variety of options across our portfolio of products.

For detailed information about our recommended finishes please refer to our pricing document or speak to a member of our sales team.

Technical Specifications:

All images used for illustration purposes only.

The company reserves the right to make without notice, any changes in material specifications or design of the goods which do not affect the operational requirements of the goods and such changes shall not affect the validity of the contract.

For complete list of product options and dimensions please refer to our website: www.sixteen3.co.uk






Colour Variations:

Whilst every effort is made to ensure parity of colour, the company cannot guarantee an exact match on any wood, or guarantee against commercial variances in laminates or fabrics, especially on repeat orders.

Accreditations:

sixteen3 believe good environmental practices go hand in hand with good product quality and as such have been certified that we meet both ISO 9001 Quality Management and ISO 14401 Environmental Management systems.

Connect with us:

-  @sixteen3_ltd
-  facebook.com/sixteen3
-  linkedin.com/company/sixteen3
-  instagram.com/sixteen3_ltd
-  pinterest.com/sixteen3_ltd



Certificate No. 14506
ISO 9001, ISO14001