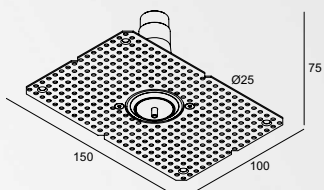
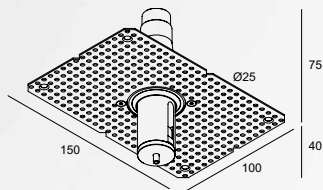
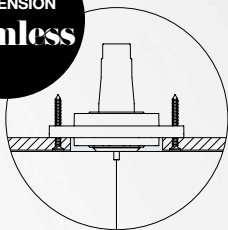


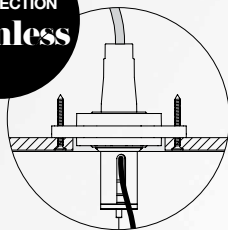
Trimless Suspension Solutions / O.F.A.

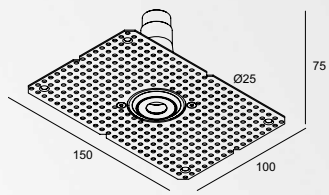


SUSPENSION
Trimless

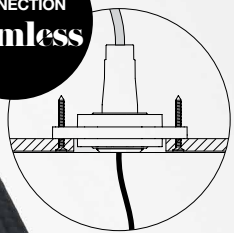


SUSPENSION
+ CONNECTION
Trimless



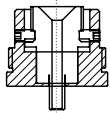
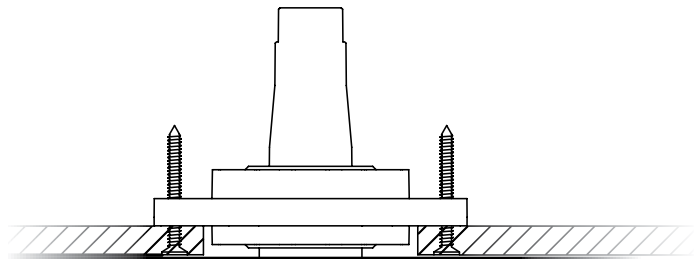


CONNECTION
Trimless

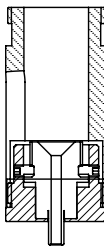
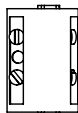


Trimless

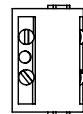
The Trimless Suspension solutions enable a discrete installation of suspension cables and power supplies, either separate or a combination of both. Either for profiles or pendant lamps, with single or multiple current supplies and suspension points, Delta Light's new trimless suspension kit offers a minimal appearance and clean ceiling appearance.



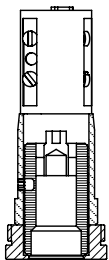
1



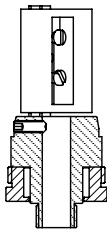
2



3



4



5

O.F.A. / One For All

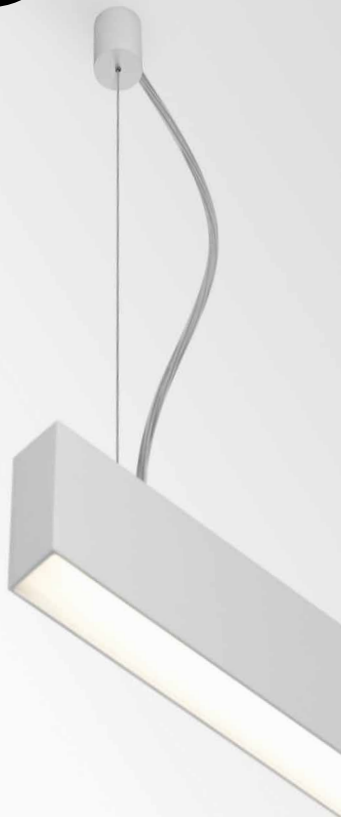
All trimless suspension options can be applied to both void and concrete (solid) ceilings.

- 1** Suspension Trimless O.F.A.
- 2** Suspension + Connection Trimless O.F.A.
- 3** Connection Trimless O.F.A.
- 4** Jackpoint Trimless
- 5** Spotnic M10 Trimless

Standard Suspension



**Trimless
Suspension**



Jac / M10 Trimless

The Trimless kit can also be applied to M10 and Jackpoint connections, focusing on the design luminaire and clean ceiling appearance.

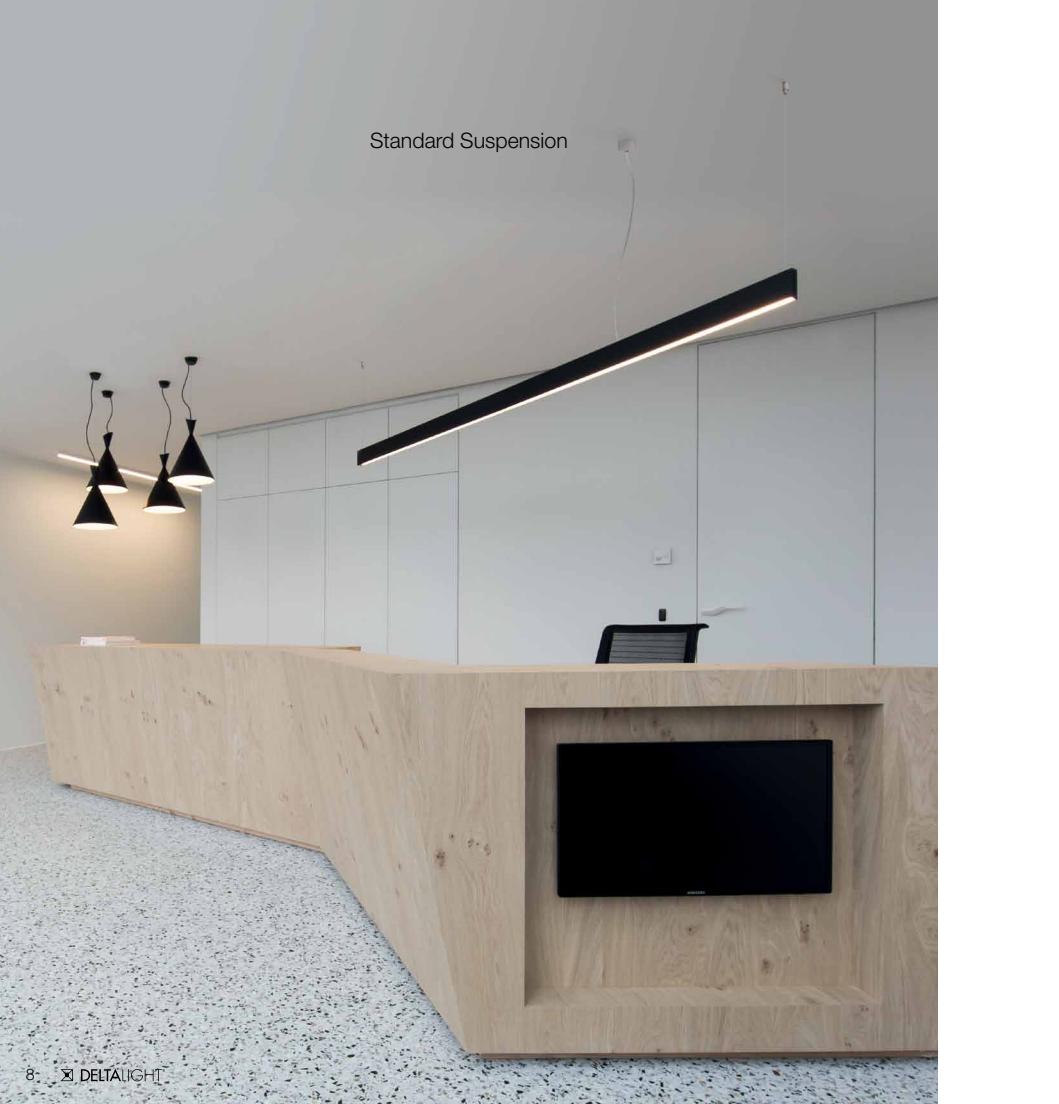
Standard Installation



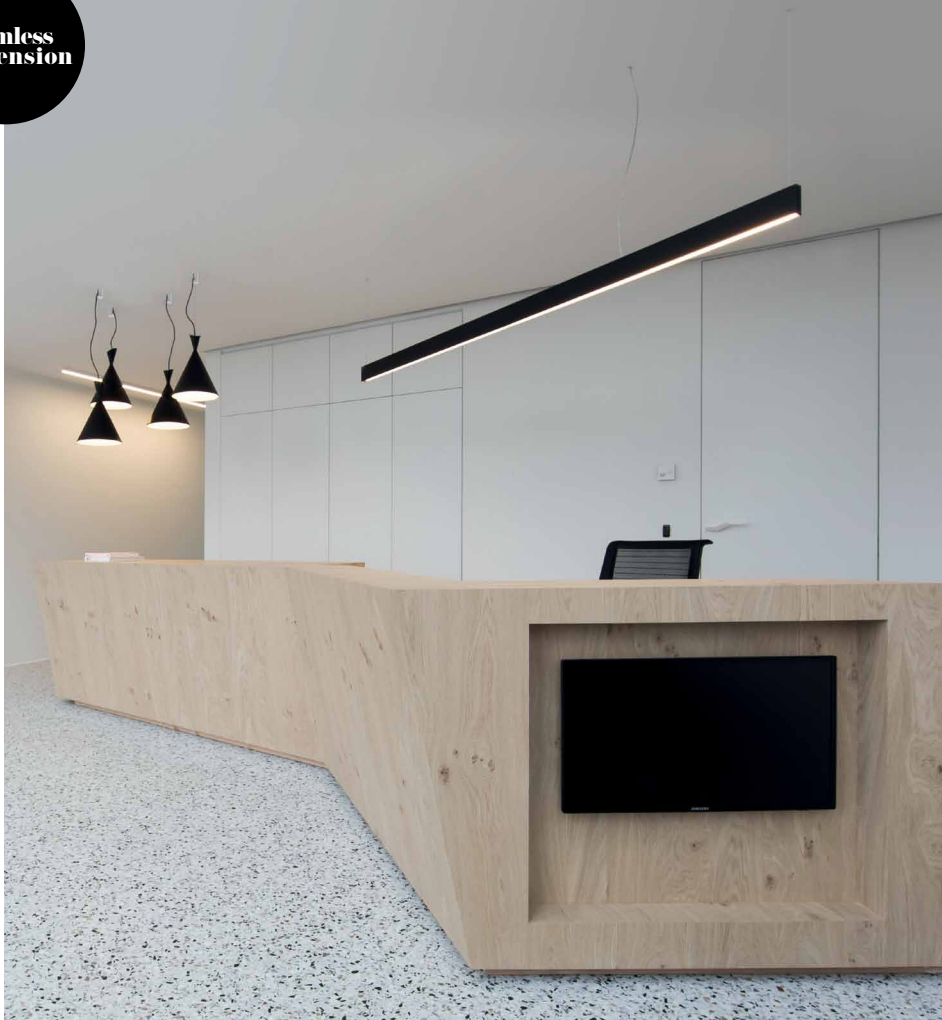
**Trimless
Installation**



Standard Suspension



**Trimless
Suspension**



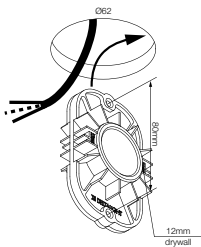


The Delta Light® collection features an extensive range of suspended made-to-measure profiles and pendant luminaires.

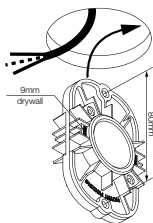
The Trimless Suspension kits can be used for nearly all of these profiles and luminaires.



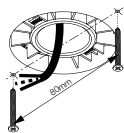
1



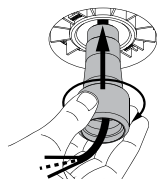
2



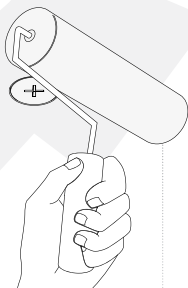
3



4



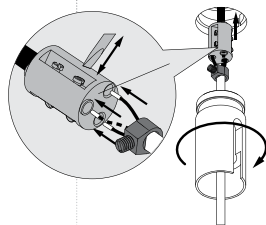
7



8



9



10

How to install

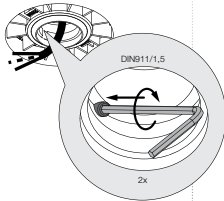


You can find installation videos on the Delta Light Vimeo channel.

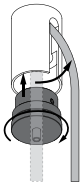
Trimless Mounting Kit Concrete
<http://vimeo.com/90236287>

Trimless Suspension Gyproc
<http://vimeo.com/90203706>

5

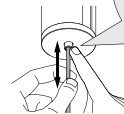


6



11

PUSH!
to adjust height



12

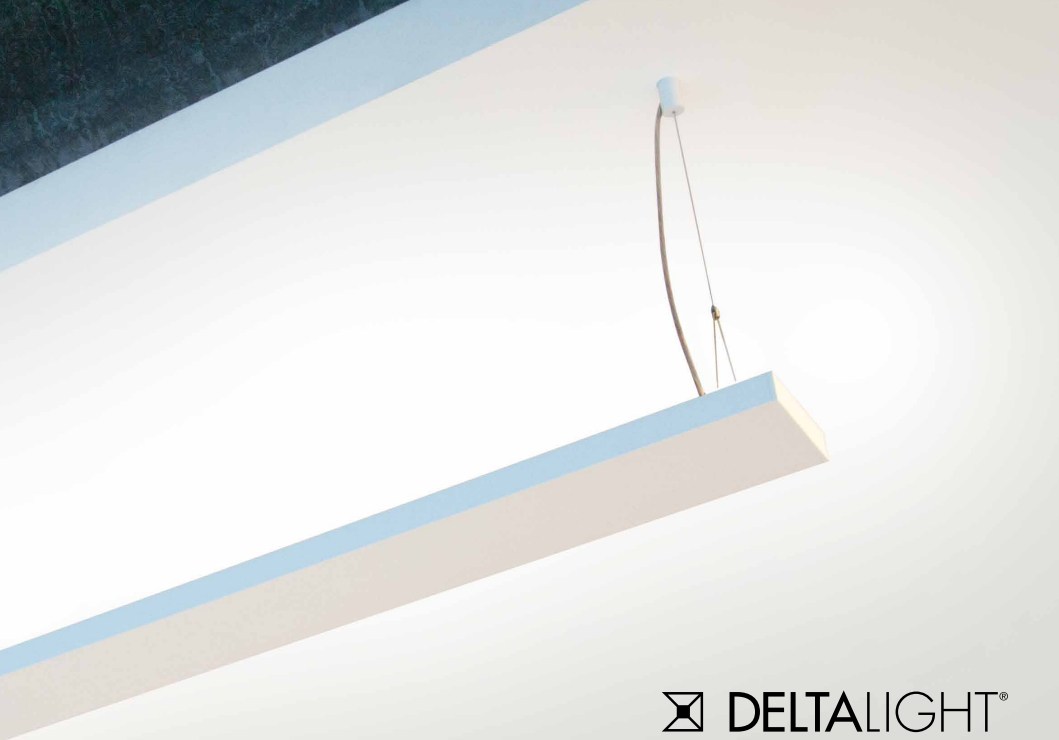
Filler

A good result after installing a Trimless kit is achieved by finishing the gap between the kit and ceiling with a two-component filler.

A normal filler hardens because the water or turpentine evaporates out of it. The result is a final layer which is flatter than the layer that was put originally. A two-component filler hardens by a chemical reaction between 2 different components and remains at the same level as applied. A two-component filler is composed of an asbestos free polyester resin that, when mixed with a hardener turns into a filler which then sets and hardens.

They typically remain elastic, are easy to sand and they have a high filling capacity.





☒ DELTALIGHT®

Trimless Suspension
offers a minimal and clean
ceiling appearance.

deltalight.com