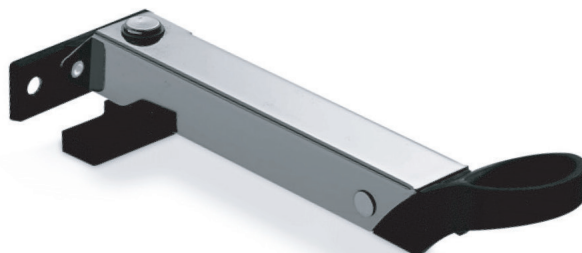


# STRANDFLEX FOLDING OPENERS

Strandflex folding openers are designed to be used on smaller sized sashes, where one opener is required for hand operation. For larger sashes use linked folding openers (see page 4 for Duoflex).

**WX4160P: PVC-U Windows \*1 \*2**  
**WX4160T: Timber Windows \*1 \*3**



## Application

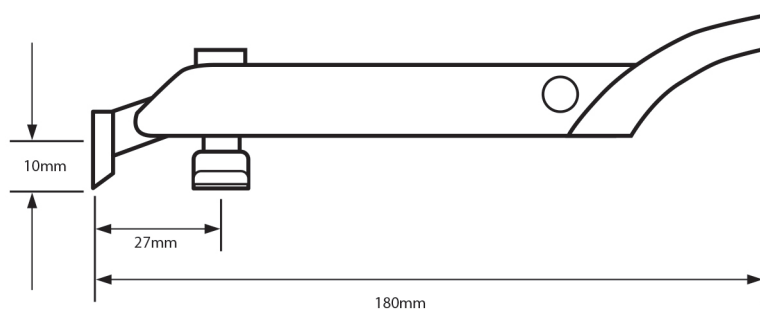
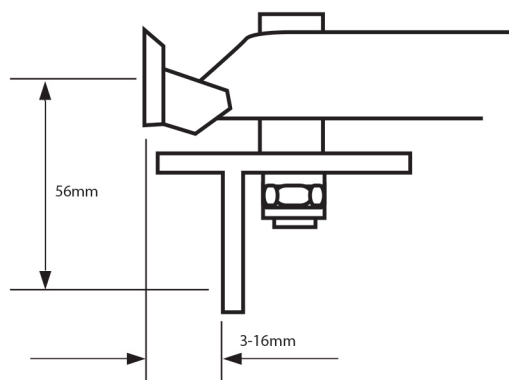
- Top hung, opening out sashes made from Timber and PVC-U.
- 90° fold back feature permits use on windows with vertical/horizontal blinds.
- Recommended screws 4.0 x 30mm.

## Description

- 160mm throw, folding action to open and close sash with additional 90° rotation.

Materials	Finishes
Stainless steel/ wear resistant polyacetate	*1 Stainless steel/black plastic pull 14
Steel/wear resistant polyacetate	*2 Powder coated white/white plastic pull 25 *3 Powder coated grey/grey plastic pull 20

## WX4160P



WX4160T



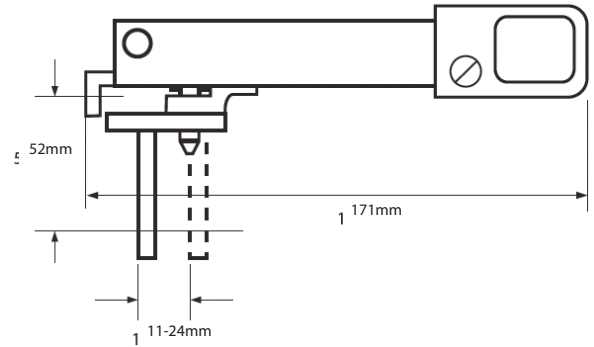
## WX5180

### Application

- Top hung opening out sashes made from PVC-U, timber and aluminium.
- 90° fold back feature permits use on windows with vertical/horizontal blinds
- Recommended screws 4.0 x 30mm

### Description

- 180mm throw folding action to open and close sash with additional 90° rotation



WX5180P illustrated

Materials	Finishes
Satin Anodised Aluminium (SAA) / Wear resistant	Satin Anodised Aluminium (SAA)/ Black plastic ring pull 11.

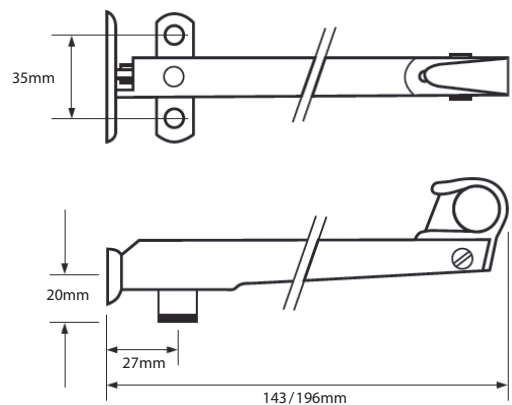
## WX8160T: 160mm throw WX8260T: 260mm throw

### Application

- Top hung opening out sashes made from Timber
- 90° fold back feature permits use on windows with vertical/horizontal blinds
- Recommended screws 4.0 x 30mm

### Description

- 160 mm & 260mm throw folding action to open and close sash with additional 90° rotation



WX8160T / WX8260T

Materials	Finishes
Stainless Steel/ wear resistant Polyacetate	Satin Stainless Steel / Black Plastic pull 14