



**play**safe

The impact absorbing  
safety system by

**playrite**

# Playground safety surfacing

# Playsafe: The impact absorbing system for play areas



---

At Playrite, we strongly believe that the best kind of safety surface is one that allows children to continue playing unobstructed, whilst still providing essential protection. A play surface needs to spark imagination, to inspire creativity and above all to be fun as well as safe. After all, a child's natural instinct is to climb, explore and sometimes to fall.

With Playsafe we've designed an impact absorbing safety system with 5 varying levels of critical fall height, providing the right levels of safety for the equipment installed with a vibrant and engaging top surface. With an option of 14 bright colours, our soft yet durable surfaces provide a comfortable playing area for children of all ages. Designed to stand the test of time, Playrite's Playsafe system is UV stable, heat and vandal resistant and offers a low maintenance alternative to other play surfaces.



# Playrite: Specialist surfaces for sport, play and leisure

Everyone at Playrite is fully committed to offer advice and expertise at any stage in a project. The fact that we are the only UK manufacturers of needlepunch, woven and tufted surfaces highlights the fact that we can offer our customers the best product for an individual project with surfaces that can last up to ten years – increasing revenue as well as usage.

Famous for innovation and always offering the highest quality synthetic surfaces, it is no surprise that Playrite has been successfully manufacturing products for the sport, play and leisure industries for over 20 years. Our high attention to detail and total control over production means that we can offer superior surfaces with a fast turnaround when our customers need it most.



August 2012 E & OE

Colours reproduced in this brochure are as accurate as the printing process allows. Samples can be ordered for free by visiting [www.playrite.co.uk](http://www.playrite.co.uk) or calling +44 (0)1924 412488

Playrite reserves the right to change or modify product specifications without giving prior notice



# How the Playsafe system works

Perfect for new projects or to refresh existing play areas, Playsafe allows you to select the exact system you require to suit your needs and budget whilst always putting safety first. Made in the UK and tested to BS EN 1177 standards, Playsafe systems offer a variable solution to suit all budgets and age of user by offering five options in terms of critical fall height. For areas suited for older children with high climbing frames there is Playsafe 32, providing 320cm critical fall height. For a play area to be used by younger children with slides and swings Playsafe 15 with a critical fall height of 150cm would be ideal. Playsafe can be successfully installed over tarmacadam, concrete, compacted soil, compacted sand, compacted aggregate or a combination of these bases.

Unobtrusive to play, the systems are installed below the top surface and then are completed by the addition of our Matchwinner Velour, Matchwinner or Nearlygrass.

To see how a Playsafe system is installed snap the QR code with your smart phone

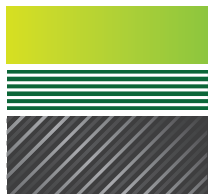


or visit  
[www.playrite.co.uk  
/media/video](http://www.playrite.co.uk/media/video)



## playsafe 8

thickness 32mm  
critical fall  
height 80cm



top surface

1 x shock  
absorbing layer

1 x load  
spreading layer

## playsafe 12

thickness 42mm  
critical fall  
height 120cm



top surface

1 x shock  
absorbing layer

## playsafe 15

thickness 48mm  
critical fall  
height 150cm



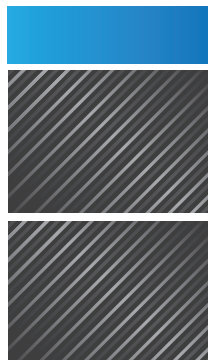
top surface

1 x load  
spreading layer

1 x shock  
absorbing layer

## playsafe 27

thickness 68mm  
critical fall  
height 270cm

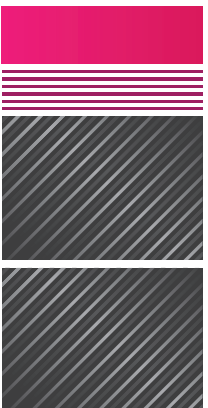


top surface

2 x shock  
absorbing layer

## playsafe 32

thickness 74mm  
critical fall  
height 320cm



top surface

1 x load  
spreading layer

2 x shock  
absorbing layer

An ideal choice for nursery playgrounds, Playsafe 8 offers a critical fall height of up to 80cm. Providing necessary safety for young children where small slides and swings are installed, Playsafe 8 system provides the necessary protection for early years and foundation level.

**Early years (toddler)**  
**Foundation (3-5 years)**

The perfect choice for use under low level climbing frames, Playsafe 12 offers a critical fall height of up to 120cm. Providing safety for younger children where slides and swings are installed, Playsafe 12 system provides the necessary protection for foundation level.

**Foundation (3-5 years)**

A great mid level safety surface, Playsafe 15 offers a critical fall height of up to 150cm. Mainly used in playgrounds for children aged 5-7 specifically where play equipment is installed, such as swings, slides and climbing units.

**Key Stage 1 (5-7 years)**

One of the best when it comes to playground safety, Playsafe 27 offers a critical fall height of up to 270 cm. Mainly used in playgrounds for older children where high play equipment is installed, Playsafe 27 is ideal under swings, climbing frames and trim trails.

**Key Stage 1 (5-7 years)**  
**Key Stage 2 (7-11 years)**

The ultimate in playground safety, Playsafe 32 offers a critical fall height of up to 320 cm. Mainly used in playgrounds for older children where higher play equipment is installed, Playsafe 32 is ideal under higher climbing frames and tower units.

**Key Stage 2 (7-11 years)**



# Choose your top surface

# Matchwinner Velour

The most popular choice of top surface for the Playsafe systems has to be Matchwinner Velour, a high performance, random pile needlepunch surface that is suitable for both playgrounds and multi sport. Matchwinner Velour offers limitless possibilities in terms of designing and customising a completely personalised play area, incorporating 14 different colour options and fun shapes and designs.

More than just an outdoor play surface, Matchwinner Velour can also be used as a multi use games surface, and is suitable for a range of sports including football, hockey, tennis and netball. Low maintenance and easy to install, Matchwinner Velour is an excellent choice with or without the Playsafe system. Hardwearing and low maintenance, this synthetic surface can help save time and money for nurseries, schools and playgrounds.



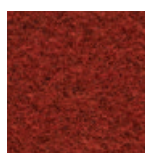
Sporting green



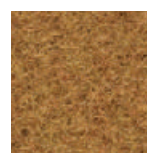
Red



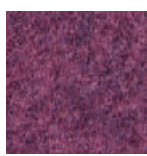
Blue



Burgundy



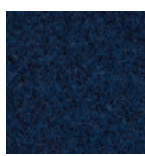
Ochre



Lavender



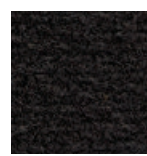
Marine



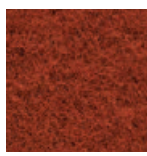
Navy



Autumn green



Black



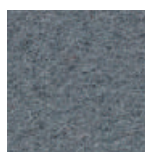
Terracotta



Yellow



Orange



Platinum grey





# Matchwinner

A high performance needlepunch surface that is suitable for playgrounds and can also be used for multi-sports, as inlaid lines can be added in white. When faced with a shortage of space or limited funds, often the best surface is one that can be used for a variety of applications, allowing the school or college to get the most from

a specific area. Matchwinner is suitable for children's play areas, outdoor classrooms and learning areas and can also be used for multi sport use including football, hockey, netball and tennis. Available in Sporting Green, Autumn Green, Terracotta, Blue, Red, Yellow and Black.



# Nearlygrass

The appearance and feel of grass, in a surface that is resilient enough to be used all year round, without the need for heavy maintenance. Nearlygrass artificial leisure grass by Playrite offers the perfect solution for a trouble free lawn. If you are looking for a strong surface that has all the best qualities of a natural lawn, without the heavy

maintenance required, then look no further. The Nearlygrass range is resilient enough to handle the most rigorous children and the good drainage means that it can be used all year round, even in areas that are particularly prone to water logging. Available in a wide choice of pile heights and textures.

# Designs are limitless...

...thanks to  
our in house  
computerised  
cutting  
machinery.

---

Incorporate your schools logo in an entrance  
mat or enhance your playground with bright and  
colourful shapes and patterns or educational  
numbers and games, designs really are limitless.





# Resistance to vandalism

---

Our Playsafe surfaces are manufactured with polypropylene fibres which have non absorbent properties, meaning that it is difficult to permanently mark or vandalise with inks, paints and spray paint. When the surface is sand filled this can make it even more difficult to vandalise and this is particularly the case with fire damage. When Playsafe surfaces are sand filled it is difficult to ignite a flame and to keep it going, also when synthetic surfaces are secured to the ground there is limited oxygen supply and this naturally helps to prevent fires escalating.



# Advantages of choosing Playsafe

---

The Playsafe range offers a hard wearing, low maintenance, long lasting option to other playground surfaces. Our surfaces are not affected by hot or cold weather, as is often the case with rubber products and because Playsafe surfaces are quick draining you won't experience water-logging as can be the case with loose fill surfaces.



# Installation

Playsafe can be successfully installed over tarmacadam, concrete, compacted soil, compacted sand, compacted aggregate, or a combination of these bases. The base must be smooth and not have sudden changes in level. To incorporate through drainage the base must drain freely. If the sub base is not free draining levels need to be created to allow water to run off. The Playsafe system is held within the base formation with the carpet edge requiring fixing. For more information, or for details of your nearest approved installer please email [info@playrite.co.uk](mailto:info@playrite.co.uk) or call us on +44 (0) 1924 412488.



# Maintenance

The maintenance requirements for a Playsafe system are minimal, but following a proper regime can help your surface last up to ten years. We recommend removing leaves and rubbish on a daily basis, checking sand infill levels on a monthly basis and treating any moss, weeds or algae when necessary.







# Questions & answers

---

Q

**Is every layer of the Playsafe systems stuck together or are the pads loose laid?**

A

The entire system is loose laid and secured by the top surface being anchored at the edge into a prepared edge detail of either concrete, tarmac or timber.

---

Q

**How deep do you have to excavate when installing the Playsafe system?**

A

To form a prepared base you'll need to excavate to the depth of the pads depending on which Playsafe system you select. The aim is to leave the surface proud of the ground and then to allow for any settlement. As a rule we recommend that Playsafe systems are installed by an approved installer, for more information please contact us at [info@playrite.co.uk](mailto:info@playrite.co.uk) or call us on +44 (0) 1924 412488.

---

Q

**Do you recommend a particular adhesive?**

A

We recommend our two part adhesive for seaming the carpet however hot melt tape supplied by Playrite is also a preferred seaming method by some contractors.

---

Q

**How long can I expect my Playsafe system to last?**

A

The system should withstand years of play and our top surfaces have been installed at many multi use games areas - which can last up to 10 years depending on usage and maintenance. It is worth noting that heavy trafficked areas are more likely to wear out before the rest of the surface

---

Q

**Do all Playsafe top surfaces need to be sand filled?**

A

The majority of our surfaces are designed to be either sand filled or sand dressed. It is our recommendation that sand is applied to our specifications as this provides longer life and helps with absorbing rainfall. When the surface is sand filled this can make it even more difficult to vandalise, and this is particularly the case with fire damage.

## Contact us

---

Playrite  
Wellington Mills  
Liversedge  
West Yorkshire  
WF15 7FH

---

+44 (0) 1924 412488  
[info@playrite.co.uk](mailto:info@playrite.co.uk)  
[www.playrite.co.uk](http://www.playrite.co.uk)



Search 'Playrite'  
on Facebook



Follow on Twitter  
[@PlayriteSurface](https://twitter.com/PlayriteSurface)

