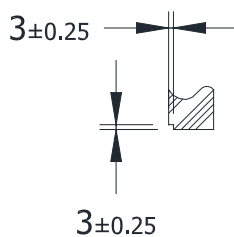
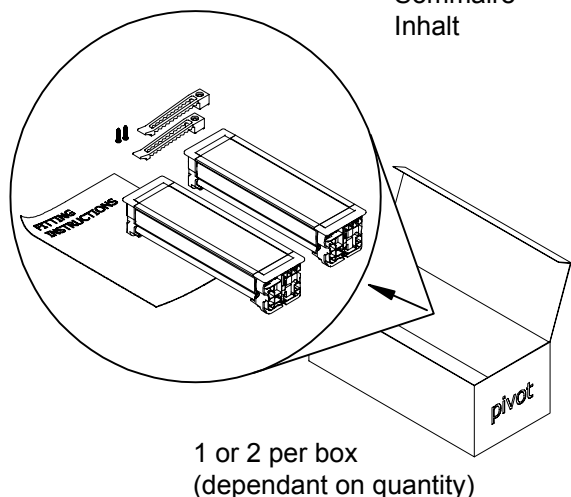
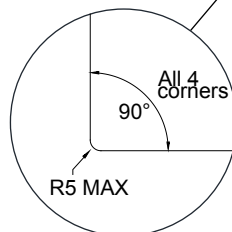
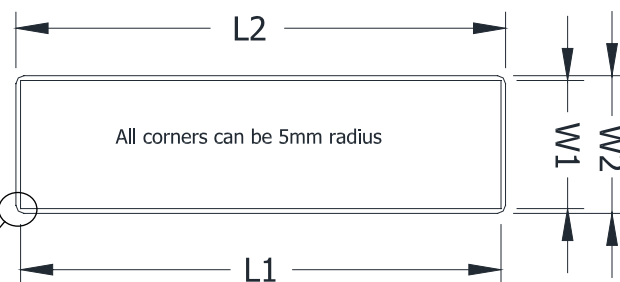


Contents
Sommaire
Inhalt



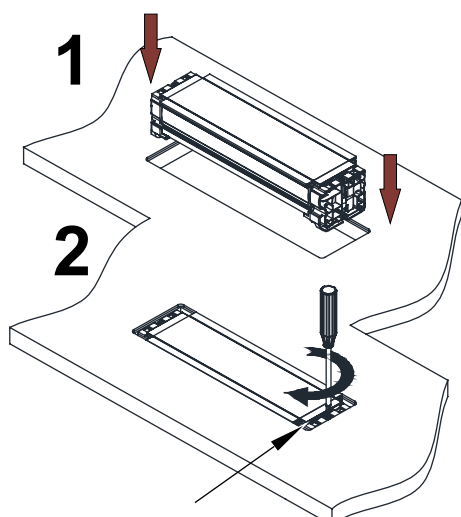
Cutout dimensions



Size	pivot 10	pivot 25	pivot 47
L1	100(+2/-0)	180(+2/-0)	299(+2/-0)
W1	80(+2/-0)	80(+2/-0)	80(+2/-0)
L2	106.5(±0.25)	185.7(±0.25)	305.0(±0.25)
W2	86(±0.25)	86(±0.25)	86(±0.25)

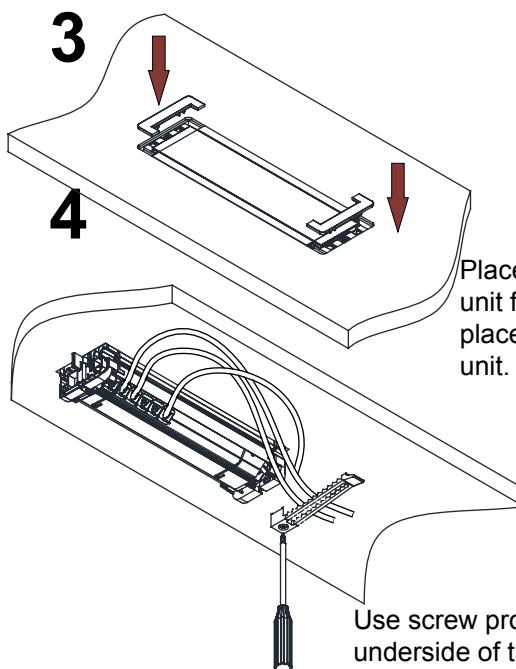
IMPORTANT

In order to ensure proper operation of unit,
cutout **MUST** have smooth straight sides



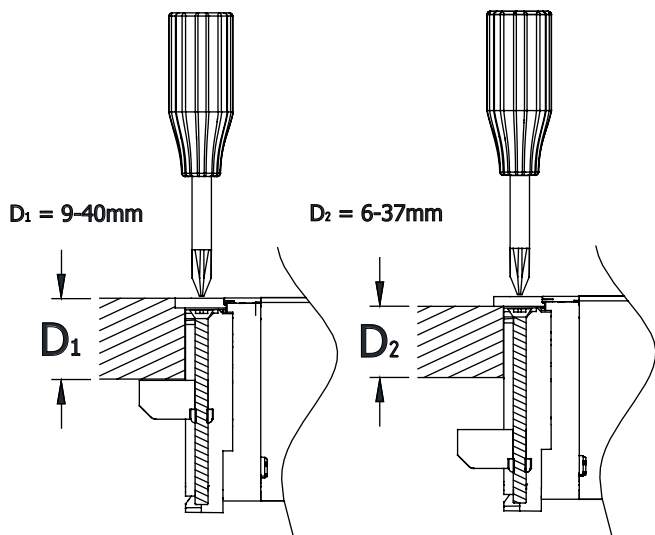
DO NOT OVER TIGHTEN.

Tighten screw only to the point where clamps
touch table



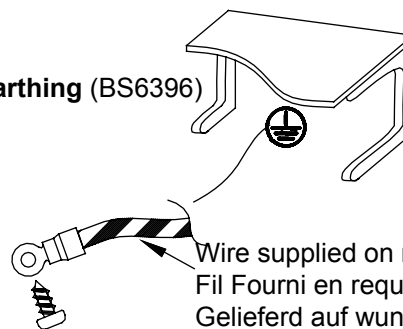
Place cable grip 50mm from end of
unit furthest from cable exit. Do not
place cable grip in front of, or behind
unit.

Use screw provided to fix cable grip to
underside of table.
If table is less than 15mm thick please use an
alternative



Max thickness of desk with recess: 40mm
Min thickness of desk with recess: 9mm
Max thickness of desk without recess: 37mm
Min thickness of desk without recess: 6mm

Earthing (BS6396)



Queries / Questions / Fragen:

+44 (0) 1924 367255

