

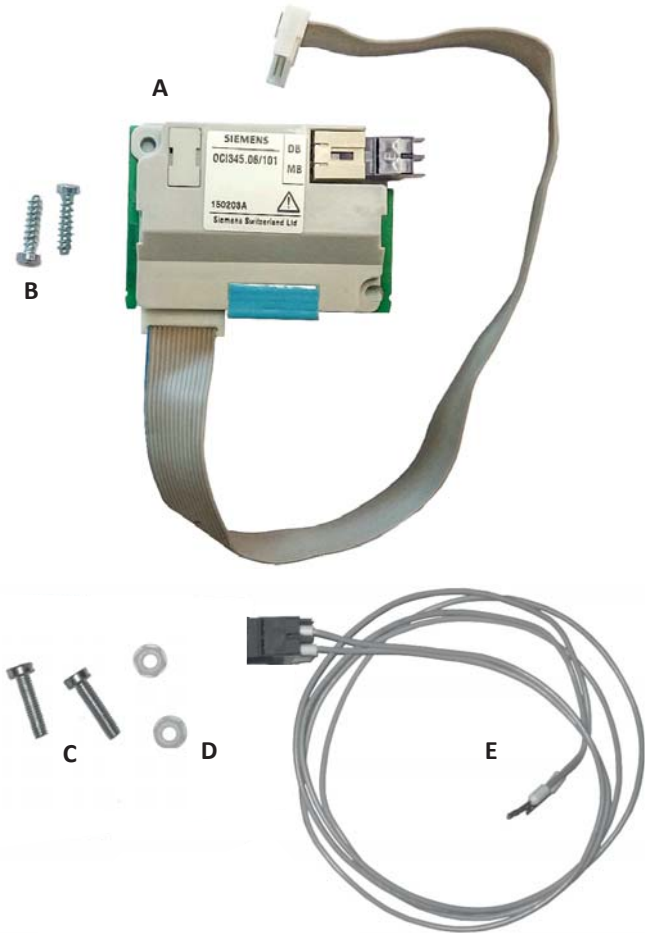
EN Cascade kit (LMS)	Kit de cascada (LMS)	ES
DE Kaskade set (LMS)	Sada pro zapojení do kaskády (LMS)	CS
NL Cascade set (LMS)	Kaskadni pribor (LMS)	SL
FR Kit de cascade (LMS)	Kaskadesæt (LMS)	DA
IT Corredo della cascata (LMS)	Κιτ κατιούσας ροής (LMS)	EL

Contents/Inhalt/Inhoud/Contenu/Contenuto		Contenido/Nastavený/Nastavitev/Sætindhold/Περιεχόμενα	
Set Contents	2	Contenido del set	9
Set Inhalt	2	Nastavený obsah	9
Set Inhoud	2	Vsebina nastavitev	9
Contenu du set	2	Sætindhold	9
Contenuto del set	2	Περιεχόμενα	9
Important note	2	Nota importante	9
Wichtiger Hinweis	2	Důležitá poznámka	9
Belangrijke opmerking	2	Pomembna opomba	9
Note importante	2	Vigtig bemærkning	9
Nota Importante	2	Σημαντική σημείωση	9
R 40		R 40	
Assembly / Programming / Wiring	3	Ensamblaje / Programación / Cableado	10
Montage / Programmierung / Verdrahtung	3	Montáž / Programování / Zapojení	10
Montage / Programmeren / Bedrading	3	Montaža / Programiranje / Električna napeljava	10
Montage / Programmation / Câblage	3	Montage / Programmering / Ledningsføring	10
Montaggio / Programmazione / Cablaggio	3	Συναρμολόγηση / Προγραμματισμός / Καλωδίωση	10
R 600		R 600	
Assembly / Programming / Wiring	5	Ensamblaje / Programación / Cableado	12
Montage / Programmierung / Verdrahtung	5	Montáž / Programování / Zapojení	12
Montage / Programmeren / Bedrading	5	Montaža / Programiranje / Električna napeljava	12
Montage / Programmation / Câblage	5	Montage / Programmering / Ledningsføring	12
Montaggio / Programmazione / Cablaggio	5	Συναρμολόγηση / Προγραμματισμός / Καλωδίωση	12
R 40 EVO		R 40 EVO	
Assembly / Programming / Wiring	7	Ensamblaje / Programación / Cableado	14
Montage / Programmierung / Verdrahtung	7	Montáž / Programování / Zapojení	14
Montage / Programmeren / Bedrading	7	Montaža / Programiranje / Električna napeljava	14
Montage / Programmation / Câblage	7	Montage / Programmering / Ledningsføring	14
Montaggio / Programmazione / Cablaggio	7	Συναρμολόγηση / Προγραμματισμός / Καλωδίωση	14

- Ⓔ Cascade kit (LMS)
- Ⓓ Kaskade set (LMS)
- Ⓝ Cascade set (LMS)
- ⓕ Kit de cascade (LMS)
- Ⓡ Corredo della cascata (LMS)

Set Contents/Set Inhalt/Set Inhoud/Contenu du set/Contenuto del set

	#		R40	R600		R40EVO
A	1	X	X	X	X	X
B	2				X	X
C	2	X	X	X		
D	2	X	X	X		
E	1	X	X	X		



Important note / Wichtiger Hinweis / Belangrijke opmerking / Note importante / Nota Importante

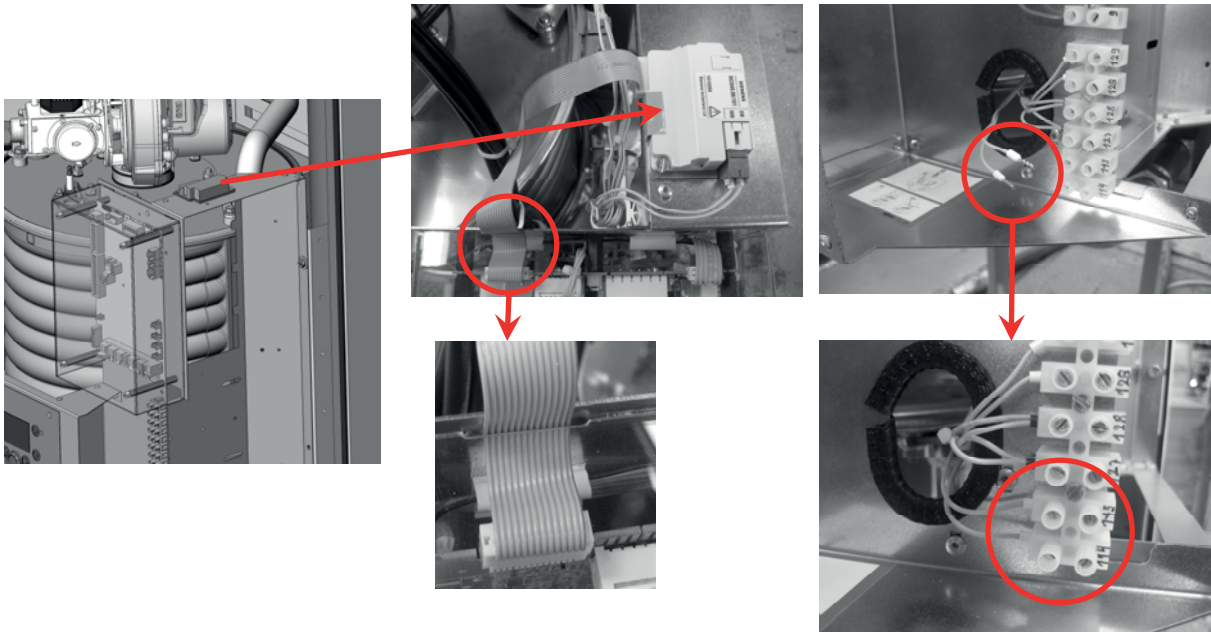


- Ⓔ Switch off the main power to the boiler, close the gas supply and close the hydraulic shut off valves.
- Ⓓ Schalten Sie den Hauptschalter zum dem Kessel aus, schließen Sie die Gas-versorgung und schließen Sie die Hydraulische Versorgung.
- Ⓝ Schakel de hoofdschakelaar naar de ketel uit, sluit de gastoevoer en sluit de afsluiters van het waterzijdige gedeelte.
- ⓕ Coupez l'alimentation principale de la chaudière, fermer l'alimentation en gaz et fermer le robinet hydraulique vannes.
- Ⓡ Togliere l'alimentazione elettrica alla caldaia, chiudere il rubinetto di alimentazione gas e chiudere le valvole di intercettazione acqua.

- Ⓔ Cascade kit (LMS)
- Ⓓ Kaskade set (LMS)
- Ⓝ Cascade set (LMS)
- Ⓕ Kit de cascade (LMS)
- Ⓘ Corredo della cascata (LMS)

Assembly/Montage/Montage/Montage/Montaggio

R 40



Programming/Programmierung/Programmeren/Programmation/Programmazione

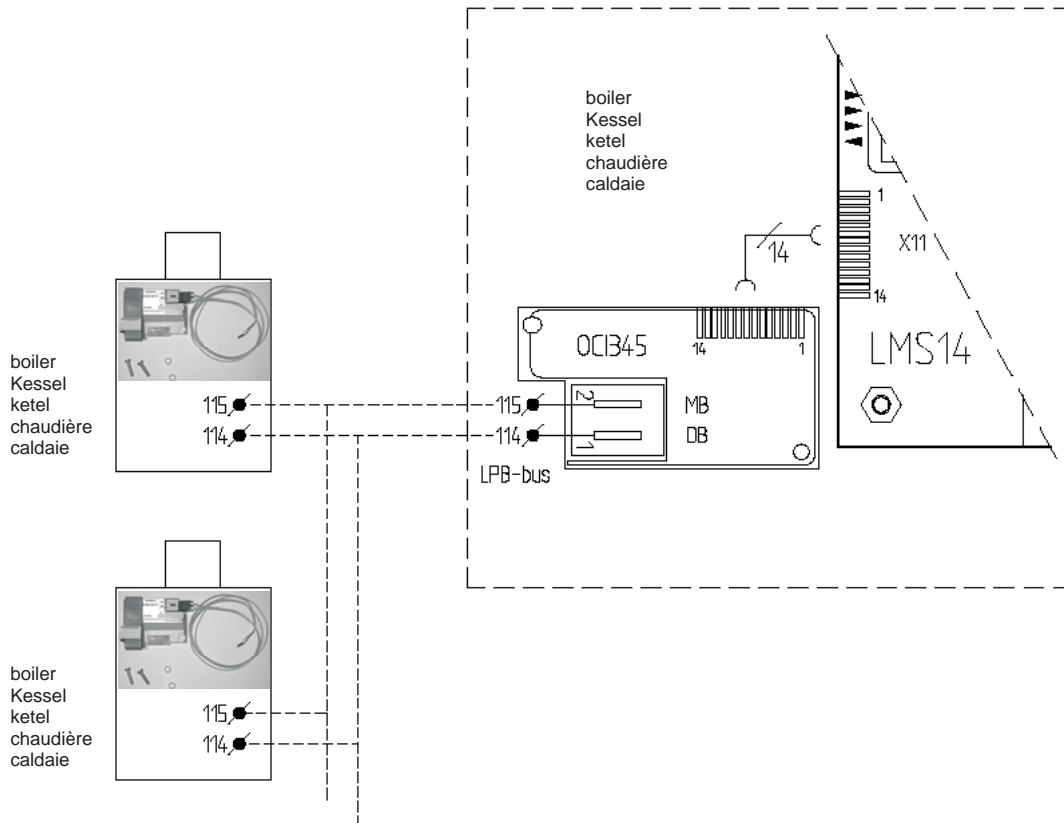
Parameters, Parameters, Parameters, Paramètre, Parametri:

Boiler 1	Boiler 2	Boiler 3	Boiler 4	→	etc. usw. enz. etc. ecc.
Kessel 1	Kessel 2	Kessel 3	Kessel 4		
Ketel 1	Ketel 2	Ketel 3	Ketel 4		
Chaudière 1	Chaudière 2	Chaudière 3	Chaudière 4		
Caldaia 1	Caldaia 2	Caldaia 3	Caldaia 4		
<u>6600</u>: 1	<u>6600</u>: 2	<u>6600</u>: 3	<u>6600</u>: 4		
<u>6601</u>: 0	<u>6601</u>: 0	<u>6601</u>: 0	<u>6601</u>: 0		

- Ⓔ Cascade kit (LMS)
- Ⓓ Kaskade set (LMS)
- Ⓝ Cascade set (LMS)
- Ⓕ Kit de cascade (LMS)
- Ⓘ Corredo della cascata (LMS)

Wiring/Verdrahtung/Bedrading/Câblage/Cablaggio

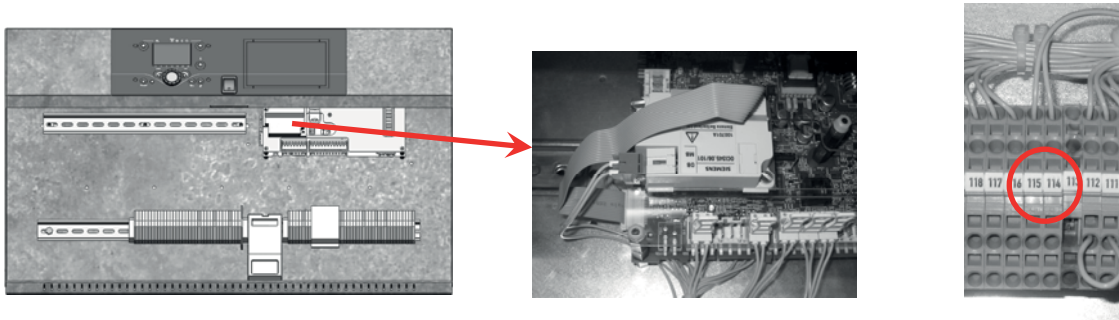
R 40



- Ⓔ Cascade kit (LMS)
- Ⓓ Kaskade set (LMS)
- Ⓓ Cascade set (LMS)
- Ⓕ Kit de cascade (LMS)
- Ⓙ Corredo della cascata (LMS)

Assembly/Montage/Montage/Montage/Montaggio

R600



Programming/Programmierung/Programmeren/Programmation/Programmazione

Parameters, Parameters, Parameters, Paramètre, Parametri:

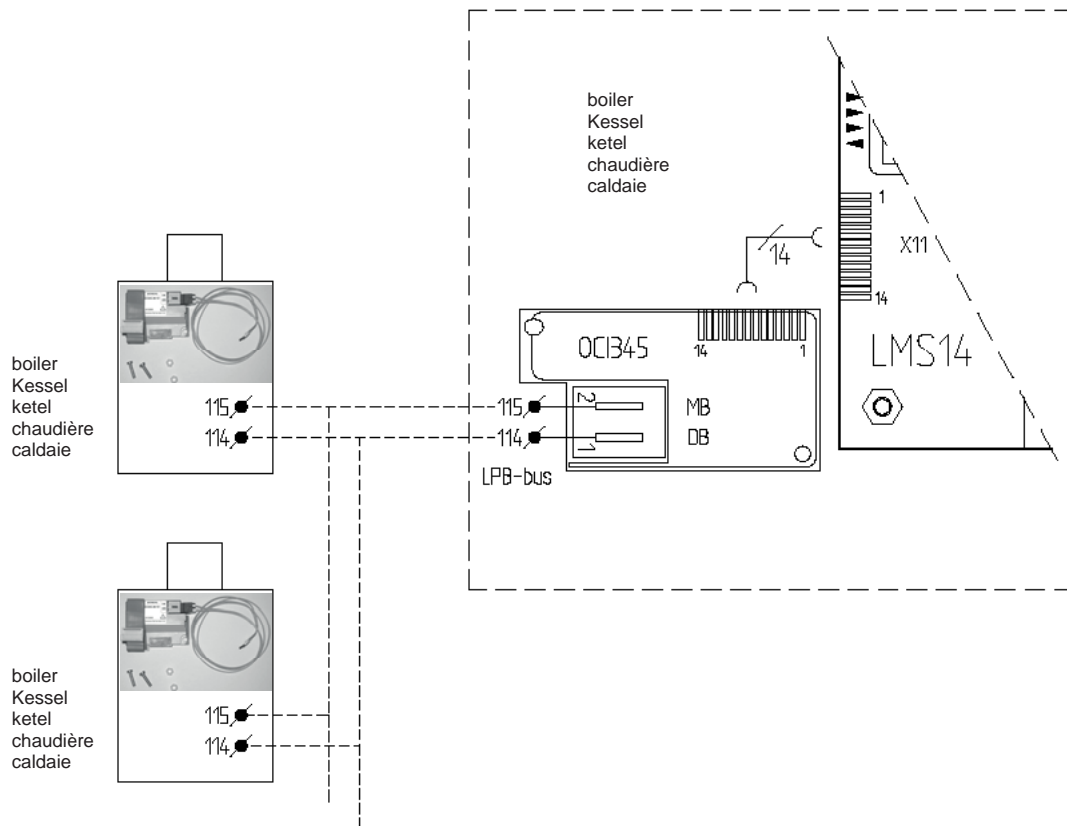
Boiler 1	Boiler 2	Boiler 3	Boiler 4	
Kessel 1	Kessel 2	Kessel 3	Kessel 4	
Ketel 1	Ketel 2	Ketel 3	Ketel 4	
Chaudière 1	Chaudière 2	Chaudière 3	Chaudière 4	etc.
Caldaia 1	Caldaia 2	Caldaia 3	Caldaia 4	usw.
				enz.
				etc.
				ecc.
<u>6600</u>: 1	<u>6600</u>: 2	<u>6600</u>: 3	<u>6600</u>: 4	
<u>6601</u>: 0	<u>6601</u>: 0	<u>6601</u>: 0	<u>6601</u>: 0	



- Ⓔ Cascade kit (LMS)
- Ⓓ Kaskade set (LMS)
- Ⓝ Cascade set (LMS)
- Ⓕ Kit de cascade (LMS)
- Ⓘ Corredo della cascata (LMS)

Wiring/Verdrahtung/Bedrading/Câblage/Cablaggio

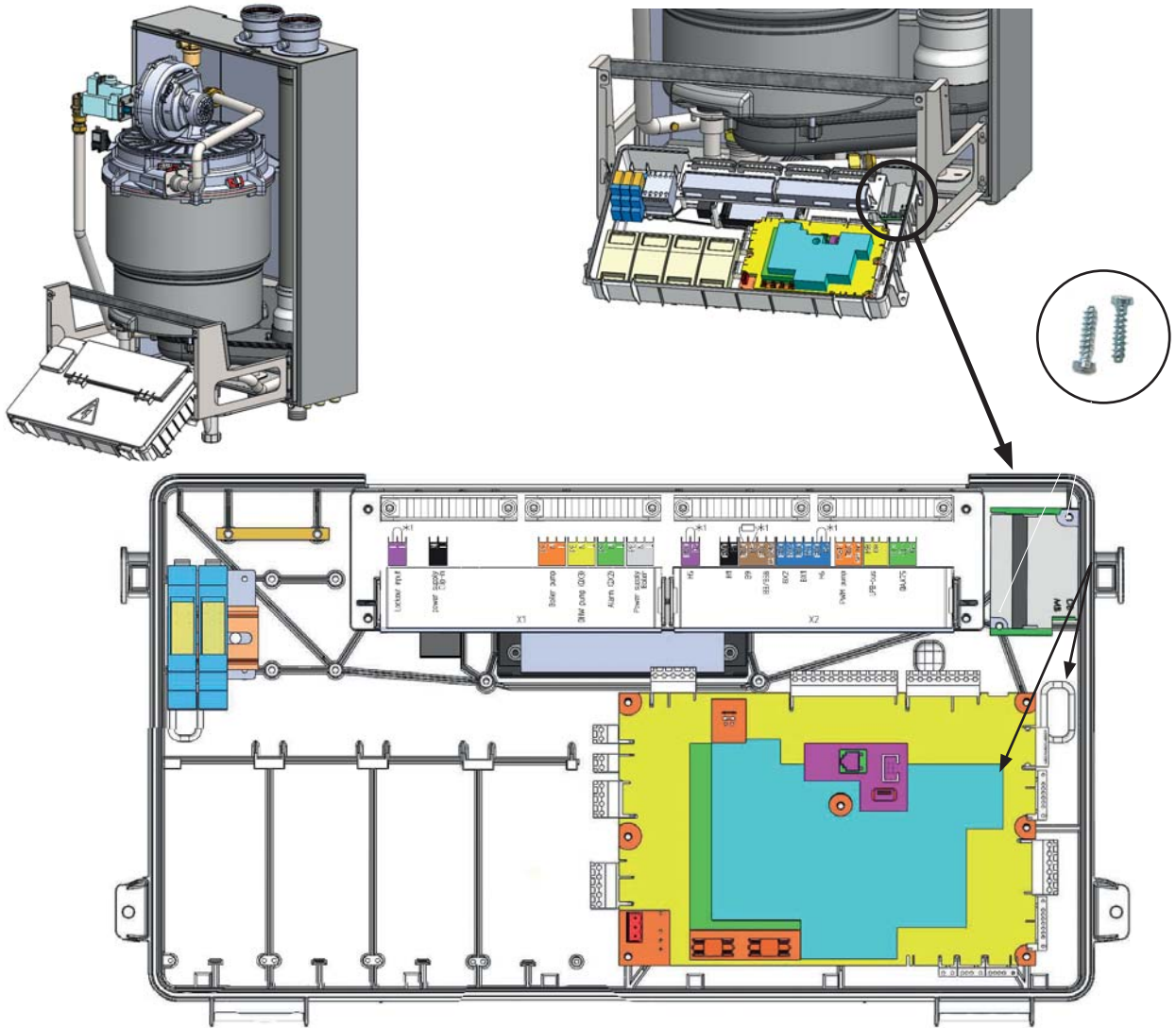
R 600



- Ⓔ Cascade kit (LMS)
- Ⓓ Kaskade set (LMS)
- Ⓝ Cascade set (LMS)
- Ⓕ Kit de cascade (LMS)
- Ⓘ Corredo della cascata (LMS)

Assembly/Montage/Montage/Montage/Montaggio

R 40 EVO



Programming/Programmierung/Programmeren/Programmation/Programmazione

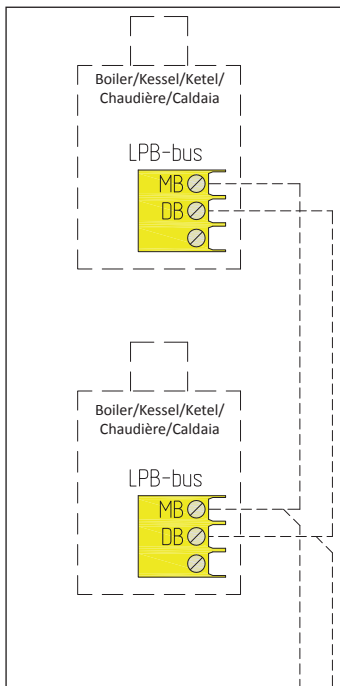
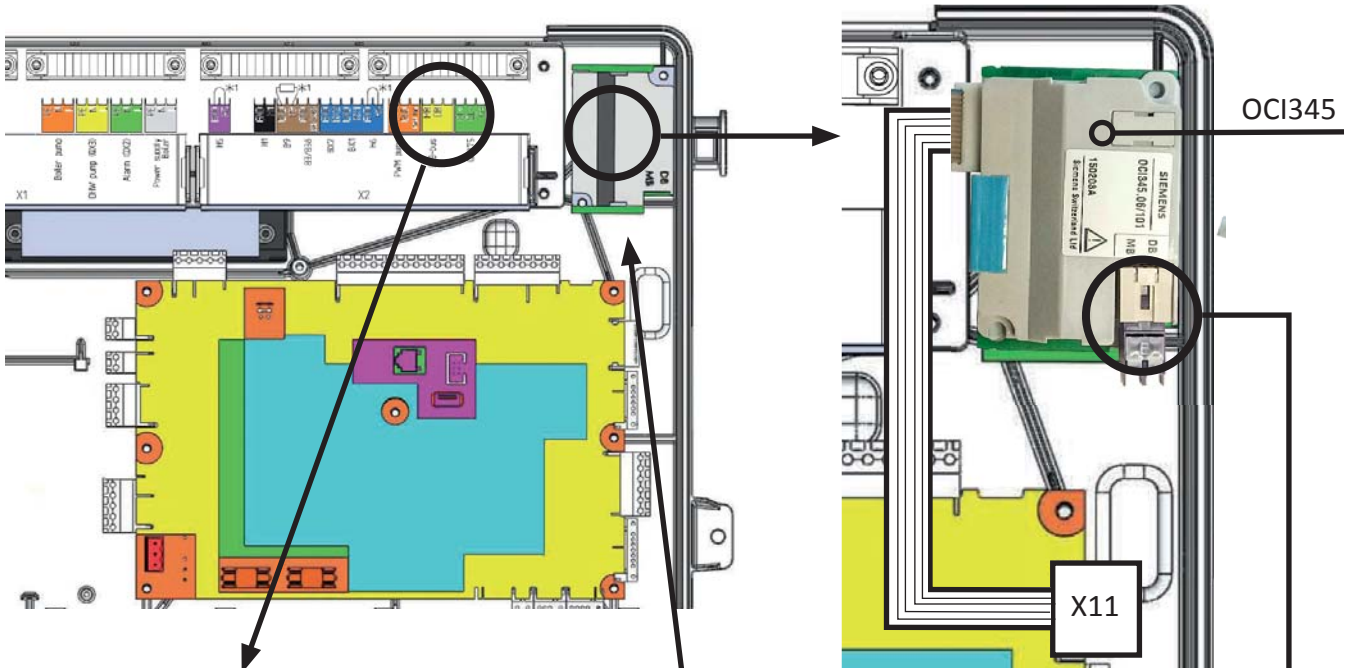
Parameters, Parameters, Parameters, Paramètre, Parametri:

Boiler 1	Boiler 2	Boiler 3	Boiler 4	
Kessel 1	Kessel 2	Kessel 3	Kessel 4	
Ketel 1	Ketel 2	Ketel 3	Ketel 4	
Chaudière 1	Chaudière 2	Chaudière 3	Chaudière 4	etc.
Caldaia 1	Caldaia 2	Caldaia 3	Caldaia 4	usw.
				enz.
				etc.
				ecc.
6600: 1	6600: 2	6600: 3	6600: 4	
6601: 0	6601: 0	6601: 0	6601: 0	

- (EN) Cascade kit (LMS)
- (DE) Kaskade set (LMS)
- (NL) Cascade set (LMS)
- (FR) Kit de cascade (LMS)
- (IT) Corredo della cascata (LMS)

Wiring/Verdrahtung/Bedrading/Câblage/Cablaggio

R 40EVO



black = MB	white = DB
schwarz = MB	weiss = DB
zwart = MB	wit = DB
noir = MB	blanche = DB
nero = MB	bianco = DB