

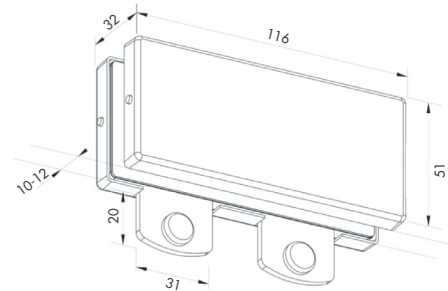
PATCH, PIVOT & LOCK FITTINGS

PD70DS Overpanel Patch

- Complete with 2 x Stop Inserts.

Finish - Satin Stainless Steel (SSS)

Material - SUS304

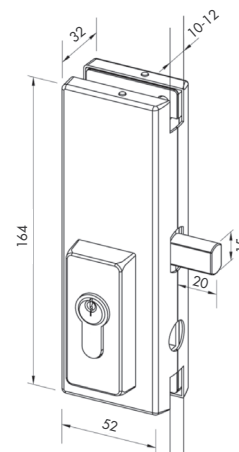


US50 Centre Lock

- Complete with PL1 Patch Locker.
- To suit GK50 Strike Box.
- To suit Euro Profile Key Cylinder (Sold separately).

Finish - Satin Stainless Steel (SSS)

Material - SUS304



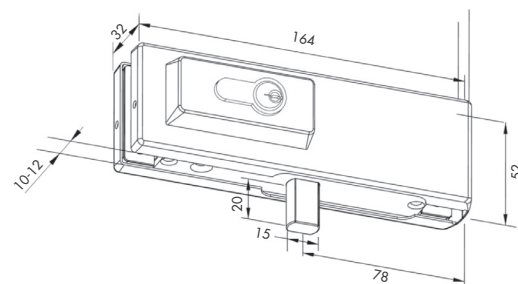
Cylinder not included

PL50 Corner Lock

- Complete with PL1 Patch Locker.
- To suit Boat Keep EC9137 and Euro Profile Key Cylinder (Sold separately).

Finish - Satin Stainless Steel (SSS)

Material - SUS304



Cylinder not included

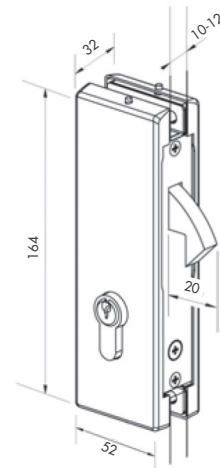
Our Standard fittings are designed to suit glass thicknesses of 10 or 12mm.
Pivot point from side panel is either 55mm or 65mm.



SL53 Hook Lock

- To suit SGK53 Strike.
- To suit Euro Profile Cylinder (Sold separately).

Finish - Satin Stainless Steel (SSS)
Material - SUS304

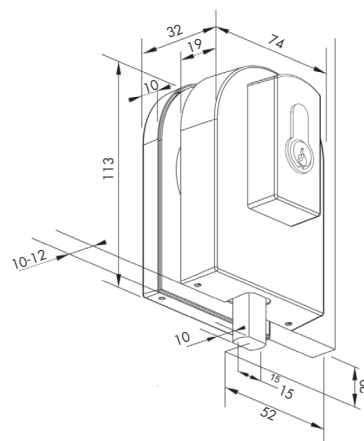


Cylinder not included

PL34 Lock Patch

- To suit Boat Keep (9137) and Euro Profile Cylinder (Both sold separately).

Finish - Satin Stainless Steel (SSS)
Material - SUS304



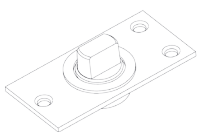
PD15

Floor Pivot

Max Load: 300kg

Finish - Satin Stainless Steel (SSS)

Material - Stainless Steel



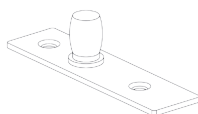
PD24

Top Pivot

Dia: 1.5mm Pivot

Finish - Satin Stainless Steel (SSS)

Material - Stainless Steel



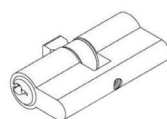
CYL40/55/60

Euro Profile Key Cylinder

C/w 3 x Keys

Finish - Polished Chrome (PC)

Material - Stainless Steel



EC9137

Boat Keep

Finish - Satin Stainless Steel (SSS)

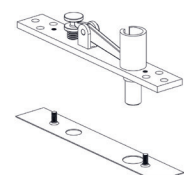
Material - Stainless Steel



EC9116

Top Pivot

Material - Stainless Steel



Our Standard fittings are designed to suit glass thicknesses of 10 or 12mm.
 Pivot point from side panel is either 55mm or 65mm.