



viewlite^x

Designed for tomorrow's change
Fits subtly into any office design.

dataflex^x

feeling at work



'The Viewlite collection offers clever solutions that you will come to love instantly. It's amazing how each product can be applied in so many different ways.'

Sedus, France



This brochure is made from FSC certified paper. www.fsc.org

viewlite^x

Designed for tomorrow's change



World class design Futureproof Sustainable



2013



reddot design award
honourable mention 2012

Viewlite's many top design honours include a Red Dot and IF award. This collection fits subtly into any office design and continues to meet your needs, even when your workspace or requirements change. You can adapt products to accommodate anything from smaller technology to changing work practices. Also designed to minimise environmental impact, Viewlite is your answer to a world that never stands still.

Behind the elegant, minimalist look & feel lies a sophisticated design that combines superb ergonomics with strength, durability, attention to detail and excellent green credentials.

Monitor arms



58.622
Viewlite plus monitor arm - desk 622

- Dynamic independent height adjustment
- Independent depth adjustment
- Height adjustment by one-way bearing

With its wide variety of interchangeable parts, the lightweight modular system gives every organisation the flexibility to tailor the ideal solution for their needs, which contributes to a healthier, happier, more productive workplace. You can also go on reconfiguring the system to meet the changing IT or layout needs of your office and evolving requirements of your business. These monitor arms are 100% recyclable and 40% of the aluminium we use has already been recycled when we get it. So you're doing your bit for the environment, too.

View our entire collection at www.dataflex-int.com

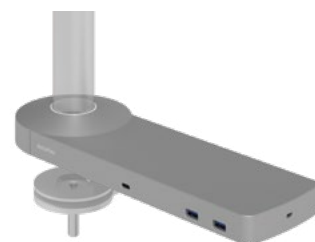


Our state-of-the-art plug & play docking stations make mobile working easier than ever.

Docking stations

Equip your workplace for today's world, where on-the-go lifestyles, hot desking, flexible workspaces and agile working are all increasingly the norm. Our docking stations instantly connect any laptop, whatever the brand, to external displays and the data network, charging it while you work. A simple but invaluable innovation. This means no more fiddling about with multiple cables, no more discovering you've left your charger at home or you're missing the one adaptor you need to connect to the external displays. Just plug & play. With all the connections you'll need for the hardware of today and tomorrow, conveniently available within arm's reach on your desk.

View our entire collection at www.dataflex-int.com



58.802
Viewlite link USB-C docking station - option 802

- USB-C for power, A/V and data
- Thunderbolt 3 compatible
- Mounts to Viewlite base or pole



58.813
Viewlite link USB-C docking station - desk 813

- USB-C for power, A/V and data
- Thunderbolt 3 compatible
- Rests firmly on your desktop





A mix of practicality, great design and sound ergonomics. With integrated cable management and made from the same 40% recycled aluminium we use in all Viewlite products.



58.402
Viewlite monitor arm - rail 402

- Fixed height
- Fixed depth



58.050
Viewlite universal tablet holder - option 050

- Adjustable fit
- Connects to Viewlite quick-release



58.512
Viewlite plus monitor arm - rail 512

- Dynamic height adjustment
- Dependent depth adjustment
- Height adjustment by one-way bearing



58.702
Viewlite toolbar - desk 702

- 3rd level creates desk space
- Toolbar width 120 cm
- Suitable for max. 3 accessories

Toolbars

These space-saving toolbars not only elegantly delineate between workplaces and support clean-desk policies, they also let you personalise and organise your workspace, and keep it clutter-free.

View our entire collection at www.dataflex-int.com

Hold your PC in a grip that never loosens.
Viewlite computer holders are tough, elegant and versatile.



35.200

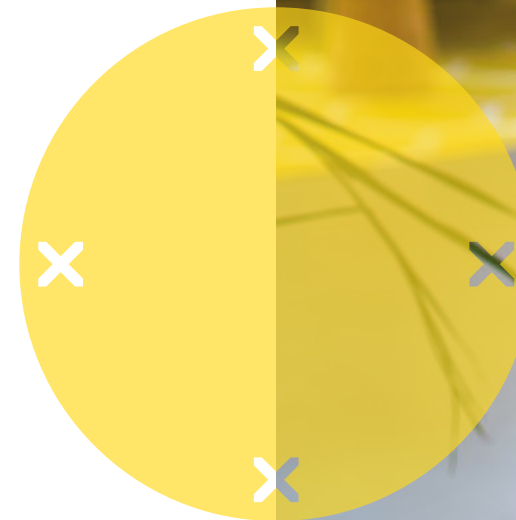
Viewlite computer holder - desk 200

- Suitable for large computers
- Supports horizontal or vertical placement
- Mounts underneath desktop

Computer holders

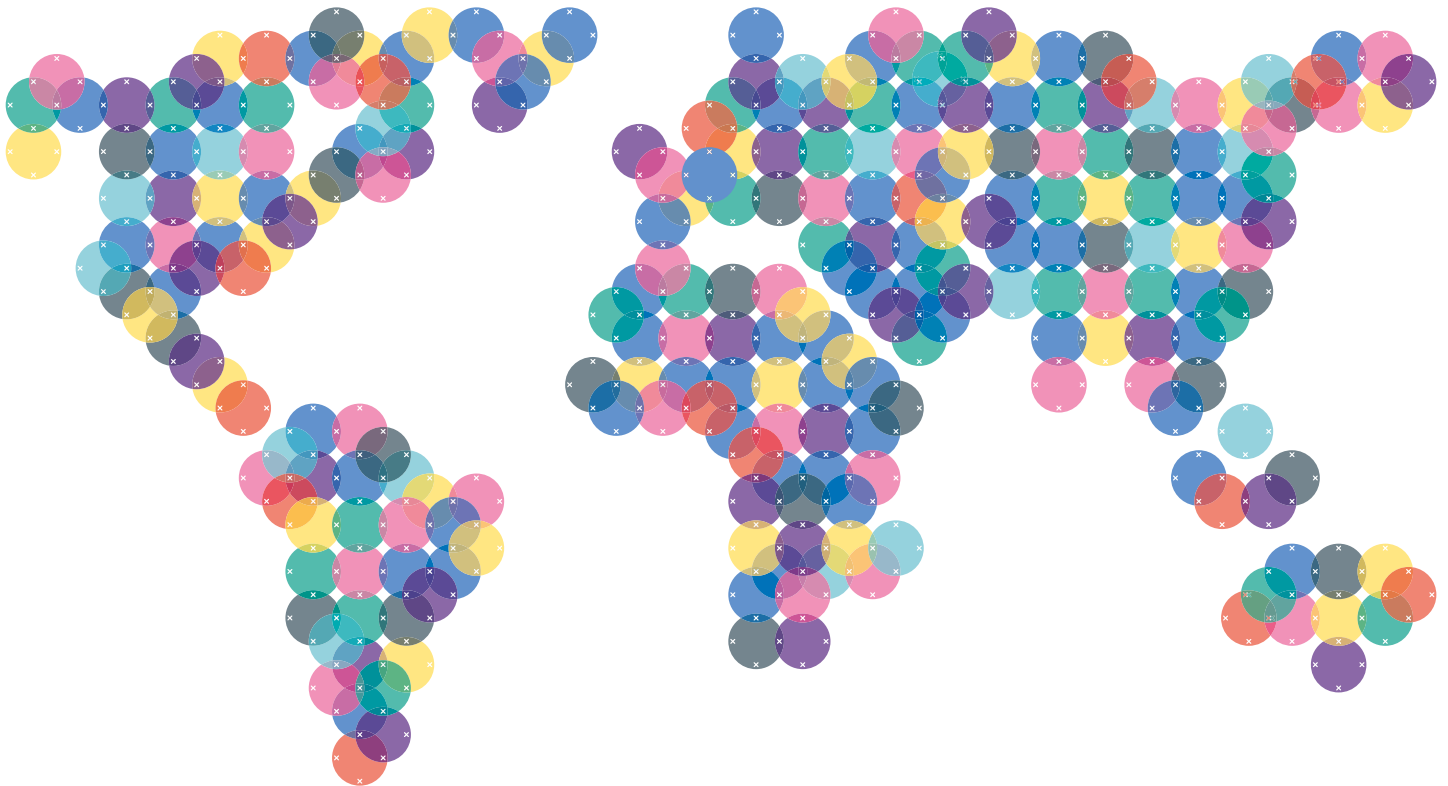
Suspended under your desktop from a choice of low or high mounting brackets, the holder is easy to mount vertically or horizontally under nearly any desktop surface, whatever your support beam system. Adjustable sliding parts mean it neatly encases a computer of any size. 100% recyclable and designed for disassembly.

View our entire collection at www.dataflex-int.com



We are international

www.dataflex-int.com



V/LT-180930-BR-EN

Dataflex International BV
Global
T +31 180 515444
info@dataflex-int.com

Dataflex Deutschland GmbH
Germany & Austria
T +49 211 17607610
info@dataflex.de

Dataflex France Sarl
France
T +33 134 753738
info@dataflex.fr

Dataflex UK Ltd
United Kingdom & Ireland
T +44 800 0305045
info@dataflex-uk.co.uk

Dataflex Benelux BV
Benelux
T +31 180 530750
info@dataflex.nl

Dataflex Italia Srl
Italy
T +39 02 91988187
info@dataflexitalia.com

dataflex

feeling at work