



10901 down pink



10902 down red



10904 down tomato



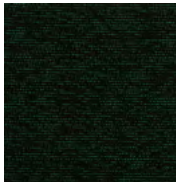
10908 down purple



10906 down turquoise



10907 down blue



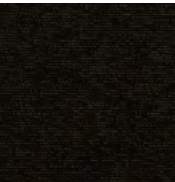
19909 down emerald



19912 down olive



19911 down yellow



19905 down mocha



19910 down light grey



19903 down dark grey



19501 up pink



19502 up red



19504 up tomato



19508 up purple



19506 up turquoise



19507 up blue



19509 up emerald



19512 up olive



19511 up yellow



19505 up mocha



19510 up light grey



19503 up dark grey

Specification

**Product Description:** Textured Loop Pile

**Pile Yarn Description:** 100% Solution Dyed Nylon (Polyamide-PA)

**Tile Dimensions:** 50 cm x 50 cm

**Pile Height:** 4 mm +/-10%

**Total Thickness:** 6.5 mm +/-10%

**Pile Weight:** 580 g/m²

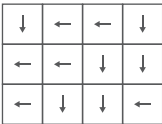
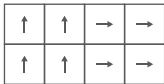
**Tufts per m2:** 176,850g/m²

**Castor Chair Rating:** BS EN 985 Pass

**Body Voltage Test:** BS ISO 6356:2000 <2kV

**Colour Fastness To Light:** Minimum grade 6

**Flammability:** Euroclass BF-s1



# up/down

**up/down** is a high performance loop pile tile class 33, ideally suited for use in any commercial space as the flexible designs' contemporary touches enhance a classic solid colour, maintaining fundamental appearance and quality. The coordinated, modern designs of the reversed pairs of vibrant up and cooler down flooring tiles enrich a space flexibly, with 24 colours making 12 reversed pairs across a balanced palette.