

- Stylish, & robust
- Easy to install
- TUF^{5A} USB charger option (2P20)
- Panel mount option
- International power options (2P20)
- Data & AV options (2P20)

Available now from stock:



powerbar 50 MF/BE



powerbar 70 MF/BE



powerbar 90 M-/BE



powerbar 2P20 M#/BE*

*2P20 M#/BE can be built to customers' specification. See website for details.

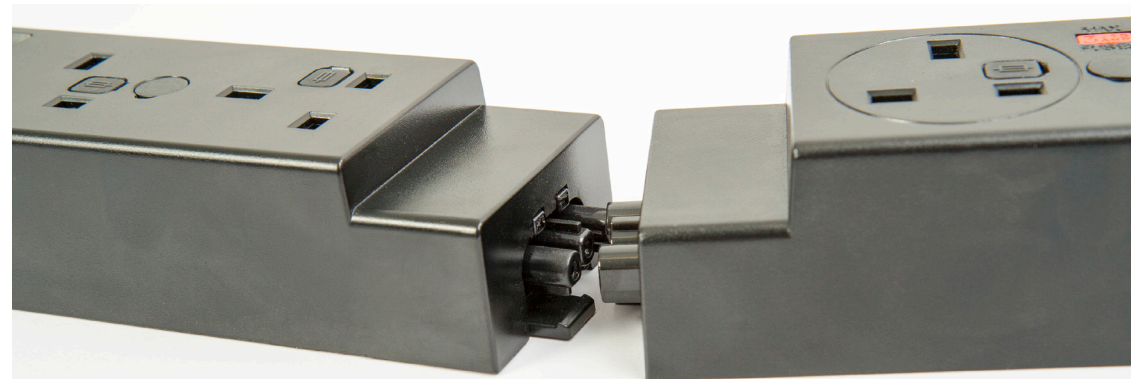
CALL NOW
01924 367255
sales@oelectrics.co.uk

oelectrics
 always innovating
www.oelectrics.com

powerbar-flyer-05-2016



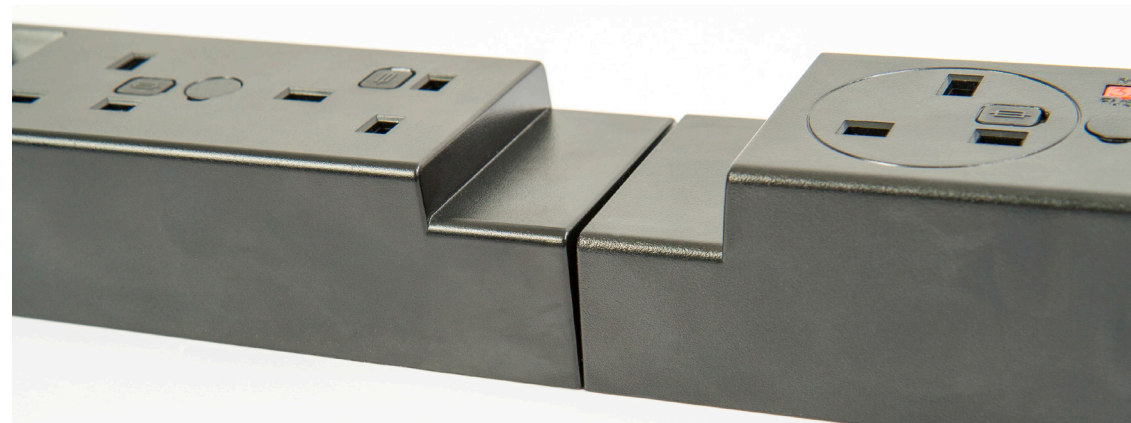
deceptively clever | powerbar





POWERBAR provides a BS6396 compliant UK 3.15A¹ fused socket power module at a competitive price point and with the build quality and reliability expected of an OE Electrics product.

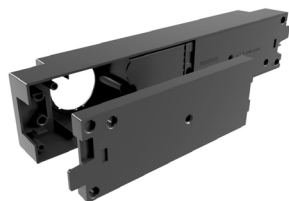
The standard POWERBAR is available from stock in both 2, 4 and 6 socket versions and the integrated connectors allow units to be clipped together or interlinked by cables with other power modules



The optional satin silver POWERBAR panel mounting frame allows POWERBAR70 and 2P20 to be fitted into panels 2mm to 18mm thick.

POWERBAR 2P20 combines two fixed position UK 3.15A¹ fused sockets with two apertures that may be configured to order with a choice of AC power, USB charging and data/AV sockets from OE's new 42mm modular range. Great additional functionality with traditional POWERBAR reliability and value.

Screen mounting requires no tools once the aperture is cut



The rear section of 2P20 can be removed for onsite data/AV installation



Optional brackets allow POWERBAR to be easily fitted to the OE PATHFINDER cabletray.

¹5A fuses can be fitted on special request