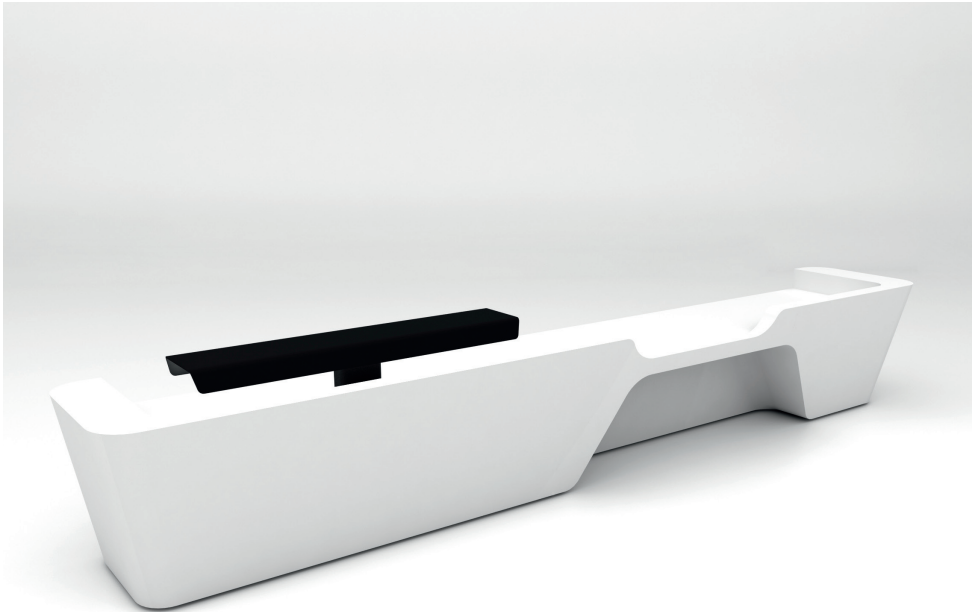


isomi



Mono Collection Desks

design by Paul Crofts

Adaptable, versatile and highly durable, the **Mono Collection Desks** manufactured in solid surface can be handed left or right and feature ergonomically positioned sign-in platforms, space for built-in storage which can be specified in modular elements, and the facility for a fully DDA (Disability Discrimination Act)-compliant recess. The desks can also be backlit and branded to the client's specification.

Features

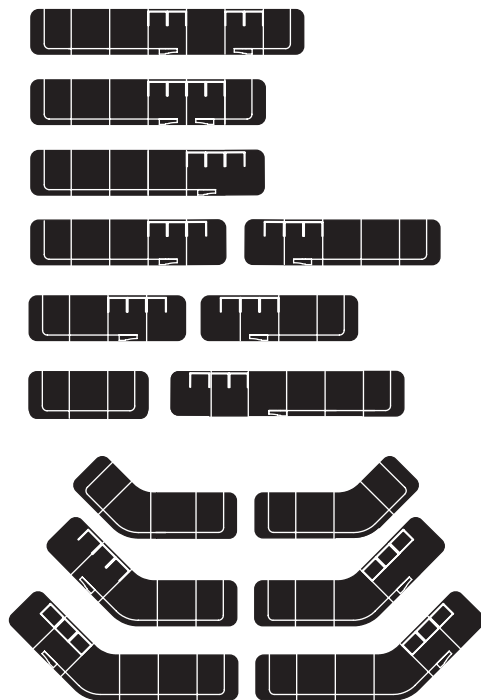
- Desk requirements can be specified from the available module options, which are then made into one seamless piece on installation
- Can be personalised using backlit translucent logo or branding
- Backlit translucent patterns
- Lighting integrated into sign in platform
- Solid surface is highly durable and impact resistant
- Easy to clean
- Pen pots, cable ports and storage space
- Seamless repairs, without visible trace
- Efficient lead times
- Range of colour options

All Isomi products and designs are protected by law, particularly by copyright, patent and trademark laws and may not be used without written permission.

Components



Configurations



isomi

Studio 2

24 Ainger Road, London NW3 3AS

Telephone +44 (0)20 7388 8599

Email info@isomi.com

www.isomi.com