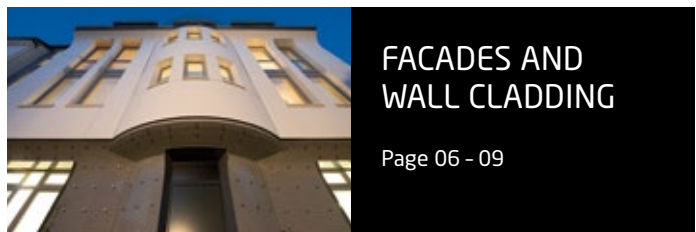




THE NEW GENERATION.
Inspired by Architecture.

REFERENCE BOOK 2015

HI-MACS[®]
Natural Acrylic Stone[™]



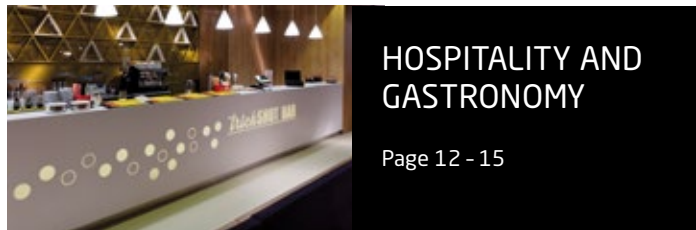
FACADES AND WALL CLADDING

Page 06 - 09



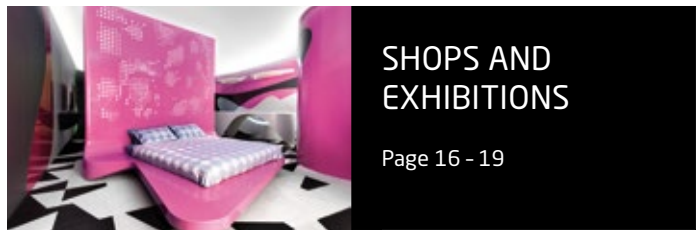
PUBLIC BUILDINGS

Page 10 - 11



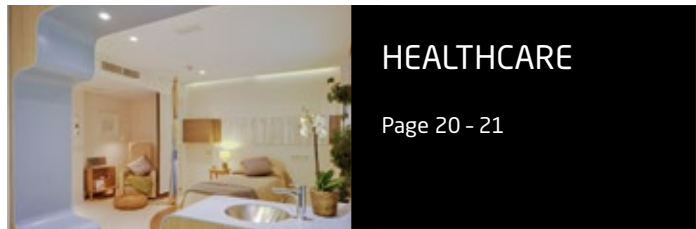
HOSPITALITY AND GASTRONOMY

Page 12 - 15



SHOPS AND EXHIBITIONS

Page 16 - 19



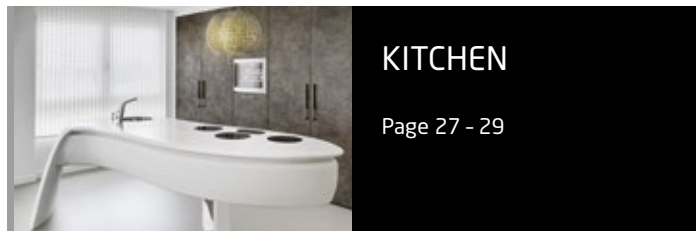
HEALTHCARE

Page 20 - 21



LIVING SPACES

Page 22 - 26



KITCHEN

Page 27 - 29



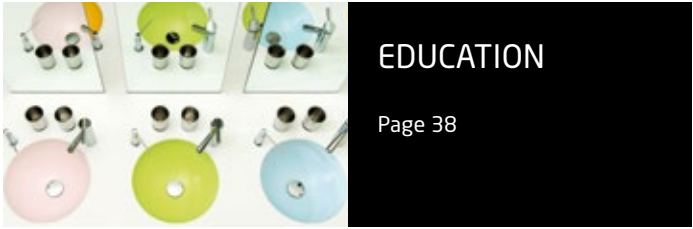
BATH

Page 30 - 33



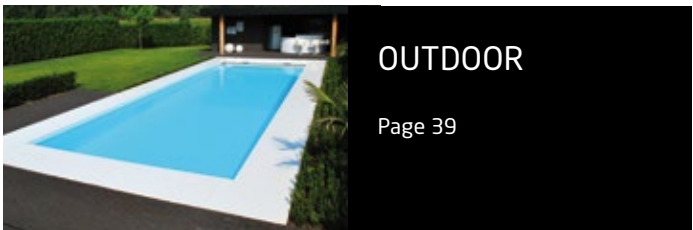
FURNITURE DESIGN

Page 34 - 37



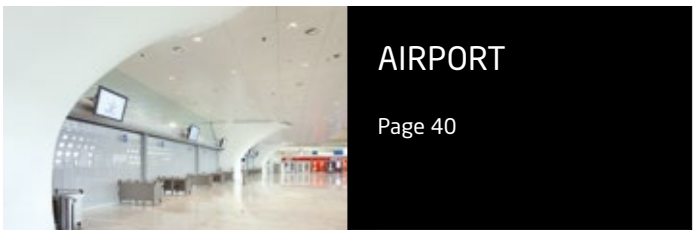
EDUCATION

Page 38



OUTDOOR

Page 39



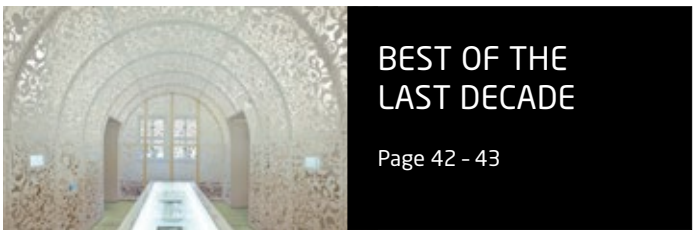
AIRPORT

Page 40



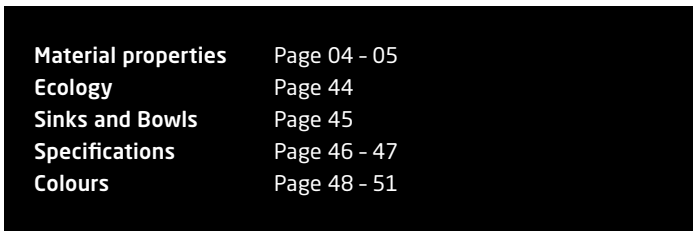
MARINE INDUSTRY

Page 41



BEST OF THE LAST DECADE

Page 42 - 43



Material properties
Ecology
Sinks and Bowls
Specifications
Colours

Page 04 - 05
Page 44
Page 45
Page 46 - 47
Page 48 - 51

THE ULTIMATE IN ART IS TO SERVE AS AN INSPIRATION TO OTHERS.

ANYONE WHO RUNS THEIR HANDS ALONG THE CONTOURS OF A VIRTUALLY SEAMLESS INSTALLATION MADE FROM HI-MACS® WILL WANT TO USE THIS MATERIAL TO CONVERT THEIR VERY BEST IDEAS INTO REALITY. THE GENTLE CURVES, THE SOFT FEEL AND THE DEEP, ELEGANT AESTHETIC APPEAL THAT THE MATERIAL EXUDES, AWAKE THE IMAGINATION AND THE ENTHUSIASM TO EMBARK ON NEW PLANS AND IDEAS. WE HAVE GATHERED A NUMBER OF EXAMPLES HERE, ALL OF WHICH ARE CAPABLE OF INSPIRING AND CREATING A DESIRE TO TREAD NEW PATHS. WITH HI-MACS®, THE MATERIAL OF THE NEW GENERATION. INSPIRED BY ARCHITECTURE.

OUTSTANDING FEATURES ABOUND. A COMPELLING MATERIAL.

HI-MACS® is an intelligent composition of acrylic, natural minerals and pigments that come together to provide a smooth, non porous and visually seamless surface which meets the highest standards for aesthetics, functionality and hygiene. Thanks in large part to its flexibility, HI-MACS® offers manifold advantages over conventional materials.



THREE-DIMENSIONAL DESIGN

HI-MACS® boasts a simple heating process and three-dimensional thermoplastic forming capabilities. This allows for greater forming flexibility compared with other conventional materials so that spectacular ideas

can quickly take on a concrete shape. No radius, shape or angle is impossible. The logical conclusion: a material that moulds to your idea and designs - not the other way around. Exactly how it should be.



SEAMLESS PERFECTION

HI-MACS® allows for visually seamless manipulation. Smooth integration enables large areas without joints or edges as well as flush mounting of sinks or bowls. Not only do objects made from this solid surface material appear to be works of art cast from a single mould, the material's seamless manipulation and non porous

nature create surfaces which are extremely hygienic, easy-to-clean and thus ideally suited for use in hospitals and laboratories. The seamless finish also allows for repair and replacement without a visible trace should any part of a HI-MACS® installation be damaged at any time.



DRAMATIC TRANSLUCENCY

Certain colours and thicknesses of HI-MACS® exhibit a special translucency when exposed to light. Various textures and patterns can be built into the material to intensify the HI-MACS® translucency effect. Depending on the light source, pattern and design, spectacular

cut-out effects can add visual interest and create a completely new sense of space. The translucent properties of this solid surface material make it the perfect choice for lamps and illuminated furnishings.



UNLIMITED COLOUR SPECTRUM

Along with choice of material, colour selection is a crucial factor when it comes to high-quality design. Elegant White, warm Toffee Brown, bold Florida Orange, mystical Cima, translucent pastels or fine shimmer textures.

HI-MACS® offers a virtually limitless range of colours in all conceivable shades. More are being added every year, no matter what colour you choose, HI-MACS® remains 100% homogeneous.



SIMPLE PROCESSING

Although HI-MACS® is almost as robust as stone, it can be worked in the same way as wood. Using conventional carpenters' tools, this solid surface material can be sawn, routed or drilled. It lends itself to the creation of

an endless variety of multi-dimensional forms and much, much more. No wonder most people working with the material have a background in woodworking and appreciate HI-MACS® as a natural partner for innovative ideas.

FACADES AND WALL CLADDING

Looks good inside and out! HI-MACS® durability makes it ideal when used both for impressive cladding projects, facades and wall linings.

Gmünd train station

Location: Schwäbisch-Gmünd, Germany

Design: preiswerk marek architekten,
Switzerland, preiswerkmarek.ch

Engineering: 5D Engineering, Germany,
5d-engineering.com

Material: HI-MACS®, Alpine White



The first impression is crucial. Train passengers arriving in Schwäbisch Gmünd are greeted by the bright underpass: the entire wall was designed in Alpine White HI-MACS® for the Regional Garden Show. The non-porous and hard-wearing composition of HI-MACS® makes it resistant to vandalism.

A futuristic lighting mood and elegantly curved shapes exude a friendly feel, but above all a high level of security.

All images on this doublepage: Photographed by Uwe Röder



Ice Loft

Location: Hamburg, Germany

Design: Köhler Architekten, Hamburg, Germany, kohlerarchitektur.ch

Fabrication: Peter Knapp Dach und Fassadentechnik GmbH, Germany, knapp-dach.de,

Abalit Elementos Moldeados, Spain, abalit.com,

Peter Grube, Germany, peter-grube.de

Material: HI-MACS®, Alpine White

Ultra-impressive: the curved wall and roof joint and the rounded bay window surround.



Classic meets modern.
The entire outer shell of this traditional town house in Hamburg was designed with mainly straight, but some curved panels made of HI-MACS®. The insides of the window reveals are also finished with the material.

PUBLIC BUILDINGS

The requirements for public spaces are very demanding. In fact these areas are everyone's environment. It's therefore good to know that HI-MACS® regularly undergoes all of the relevant product tests and carries all the required certificates.

Swimming Pool

Location: Lingolsheim, France
Design: Urbane Kultur Architectes, Strasbourg, France, urbanekultur.fr
Fabrication: ADJ, France, adj.fr
Material: HI-MACS®, Alpine White

A sky full of polka dots.
This public swimming pool in Paris is spanned by a huge domed ceiling. The virtually seamless white HI-MACS® ceiling with its round light recesses almost appears to float.



Recessed flush into the ceiling and powerfully backlit, the roof construction is both aesthetically impressive and also extremely easy to clean and maintain.

All images on this doublepage: Photographed by JB Dörner

HOSPITALITY AND GASTRONOMY

HI-MACS® creates visual, statement features in the trendiest of bars, the most upmarket of restaurants and the happening clubs. Almost every ambience a designer might wish to create can be achieved with the diverse properties of the material.



Fitness Centre

Location: Gaunting/Munich, Germany

Design: Popp Art, Lars Popp & Friends, Germany, popp-art.de

Fabrication: Schreinerei Thorsten Mayer, Germany, schreinereimayer.de,

Klöpfer Surfaces, Germany, kloepfer-surfaces.de

Material: HI-MACS®, Alpine White, Opal, Steel Grey

All images on this doublepage: Photographed by Wilson Ortiz

Heavily pigmented colours require more maintenance.



The beautiful white giant.
HI-MACS® effectively trumps all with the virtually seamless joints in this beautiful bar. The result is a monolithic entity, on which the sharp edges are enhanced by rounded edges.



M2 Cafe Bar

Location: Göppingen, Germany
Design: Bredt und Partner GbR, Germany, bredtundpartner.com
Fabrication: Teamplan Josef Mayer GmbH, Germany, bankeinrichtungen.com, Klöpfer Surfaces, Germany, kloepfer-surfaces.de
Material: HI-MACS®, Alpine White

Dark brown meets Alpine White.
Located directly on the lively marketplace, right in the heart of the city, the modern M2 Cafe Bar attracts customers with its striking mix of materials: oak, glass and HI-MACS® in gold, yellow, dark brown and Alpine White blend perfectly with each other.

TrickShot

Location: Bucharest, Romania
Designer: Sebastian Mindroiu | Pick Two
Fabrication: Atvangarde Surfaces, Romania, atvangarde.ro
Material: HI-MACS®, Alpine White

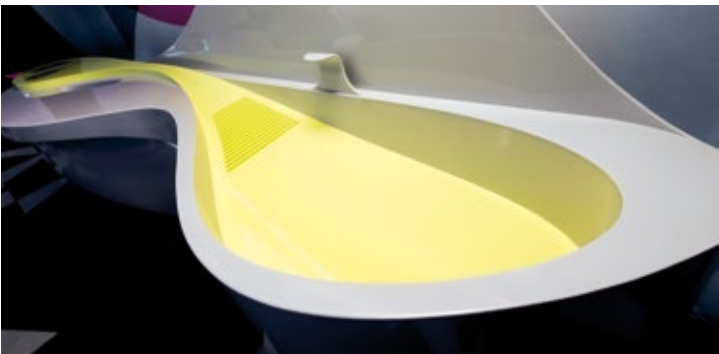


True to its name: HI-MACS® in the TrickShot.
The writing on the counter unit in this Romanian bowling, darts and billiard club can be switched on and off easily. The illuminated rear-milled cut-outs mean that the surface remains as smooth as it did before and perfect to clean.



SHOPS AND EXHIBITIONS

Selling has to be learned and generally starts with the presentation of the goods for sale. HI-MACS® expertly puts the products in the spotlight and guides the customer's gaze in the right direction. Corporate logos can be simply and easily applied to or cut into the material.



You'd rather look than close your eyes.
The Sparkle Krib exhibition in the Italian city of Milan deliver a veritable explosion of colours and shapes. These effects would be unthinkable with a material with less flexibility than HI-MACS®: here the material is backlit, three-dimensional and used over large areas thanks to its virtually seamless joints. The result: WOW!



The illuminated and seamless rear wall of the bed in Kandy Pink and also the Kandy Pink of the rear wall of the bench create an electrifying ambience.



Sparkle Krib

Location: Temporary Museum for New
Design: Superstudio Più, Milan, Italy
Design: Karim Rashid, USA, karimrashid.com
Curator: Sung-hee PARK
Material: HI-MACS®, Key Lime, Kreemy Grey, Kold Silver, Kandy Pink, Kanada Violet





The curved shape of the wall shelving elements produces two intertwined elliptical rooms with an impressive interplay of light and shade.

SHOEBALOO Flagship Store Amsterdam

Location: Amsterdam, Netherlands

Design: MVSA Architects, Netherlands, mvsa-architects.com

Fabrication: Smeulders Interieurgroep, Netherlands, smeulders-ig.nl, Bone Solid, Netherlands, bonesolid.nl

Material: HI-MACS®, Alpine White, Opal

High-end shoe fashion meets breathtaking architecture.

Maximum openness and transparency for the most effective product display possible were the objectives when designing this flagship store in Amsterdam in the Netherlands. The walls and displays are created from layers of HI-MACS® which give the illusion of flowing directly from one to another.



All images on this doublepage: Photographed by Jeroen Musch

HEALTHCARE

Cleanliness and sterility is paramount in hospitals and laboratories and any materials used should also meet the strictest standards. Its internationally certified resistance to dirt, viruses, bacteria and numerous chemicals make it the first material of choice in the health-care sector.

Maternity

Location: Valencia, Spain
Design: AMA Arquitectura de Maternidades, Spain, arquitecturadematernidades.com
Architect: Angela Müller and Marta Parra
Fabrication: Jucalbe Carpinteria, Spain, jucalbe.com
Material: HI-MACS®, Sky Blue



A sweeping welcome to the world!
The vanity top, wall and ceiling panels in this maternity hospital are made from a continuous 60 cm wide strip of HI-MACS®. The result is an ultra-hygienic piece of furniture incorporating seating and a bathroom - with integrated bowl and ceiling lights.

The perfect hygienic material for perfect dental hygiene.
Perfect hygiene and, above all, optimum ease of care for all the equipment in the treatment area play a key role in doctors' surgeries. Countertops with flush set-in sinks are all made of HI-MACS®. A host of certificates are all testament to the outstanding suitability of HI-MACS®, specifically in the medical sector.



Dental Practice

Location: Berlin, Germany
Design and Fabrication: Geilert GmbH, Germany, geilert-gmbh.de, Klöpfer Surfaces, Germany, kloepfer-surfaces.de
Material: HI-MACS®, Alpine White



LIVING SPACES

Any materials used within your own four walls are generally selected with the utmost care. After all you are going to be living under the same roof as them. It's ideal then that HI-MACS® is completely at home wherever a stylish, cosy and personalised ambience is required.

The kitchen countertop, extractor hood surround and the fronts of the furniture are all made in Alpine White HI-MACS®: simple to look after and simply beautiful.



Bermondsey Warehouse Loft

Location: London, United Kingdom

Design: Malcolm Crayton and Mike Neale at FORM Design Architecture, United Kingdom

Material: HI-MACS®, Alpine White

A dream in Alpine White.

The mix of materials in this spacious town house in London is fascinating. The vintage appearance of the old wooden planks is contrasted by the matt HI-MACS® surfaces. Large sections of the furnishings are made of HI-MACS® throughout - the shelving and desks as well as the entire kitchen.

Fort Asperen
Location: Acquoy, Netherlands
Design: Bureau SLA,
Netherlands, bureausla.nl
Material: HI-MACS®, Alpine White



The white house within the brown house.
A fascinating idea: the traditional wooden house with its heavy wooden-beamed roof was first gutted and then enhanced with an ultra-modern house within the house. The “little house” is entirely made of HI-MACS®. And once again it is clear how traditional wood and innovative HI-MACS® complement each other wonderfully.

Private House Berchtold
Location: Termen, Switzerland
Design: Werner Berchtold, Switzerland
Fabrication: Zeiter + Berchtold AG, Brig-Glis
zeiter-berchtold.ch
Material: HI-MACS®, Alpine White,

All images on this page: Photographed by Thomas Andenmatten



HI-MACS® with an Alpine panorama.
The vast kitchen island with its spacious, flush-mounted sink, as well as all the free-standing sinks and the wonderful bathtub in the bathroom, are all designed in Alpine White HI-MACS®: in every room with a view of the Alpine panorama.

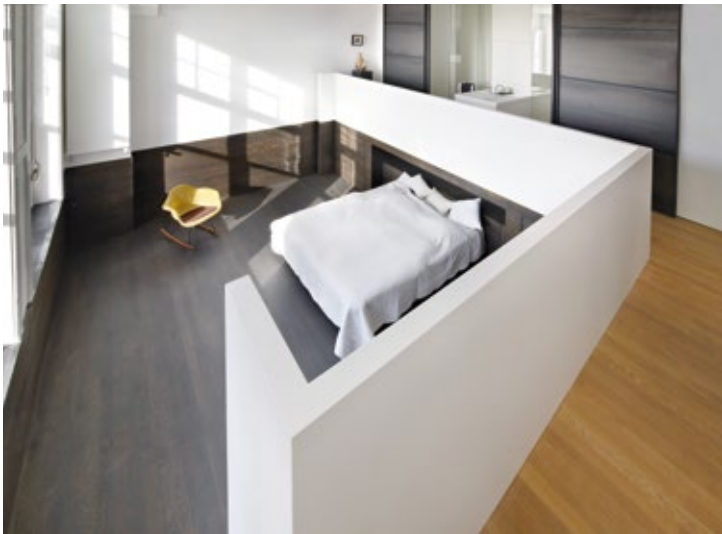


Canal House

Location: Amsterdam, Netherlands
Design: George Witteveen, Netherlands, witteveenarchitecten.nl
Fabrication: Houtwerk BV, Netherlands, houtwerk.nl
Material: HI-MACS®, Alpine White



Touch!
HI-MACS® is very pleasing to touch: the satin finish literally invites people to touch the material. The bowl unit, staircase surround and bathtub are therefore all made of HI-MACS®.



All images on this page: Photographed by Herman van Heusden



The entirety of this bathtub set in the floor is made of HI-MACS®. The material, which is pleasing to touch and warm against the body, perceptibly elevates bathing pleasure.

KITCHEN

The ingredients as well as the material on which they are prepared, have a key role to play in creating a thoroughly successful meal. Thanks to its non-porous, dirt-repellent surface, HI-MACS® is ideal for working with food and even common chemicals cannot harm the material. Cooking thus becomes an absolute pleasure.

“Swing” made in the Netherlands. And made with HI-MACS®.

The name discloses the designer’s idea: this kitchen island has been designed to look like a gently curling leaf. The edges and the support surround perfectly continue this natural curve: an impressive kitchen unit, designed in the Netherlands.

Leaf

Location: Amsterdam, Netherlands
Design: Culimaat High End Kitchens, Netherlands, culimaat.nl
Material: HI-MACS®, Alpine White



All images on this page: Photographed by René van Dongen

The Sky is the limit

| | |
|--------------|----------------------------------------------|
| Location: | Namuur, Belgium |
| Design: | Xavier Bonte, Belgium |
| Fabrication: | TMA Productions, Belgium, tma-productions.be |
| Material: | HI-MACS®, Alpine White, Mazarin Blue, Opal |



The purpose of this multifunctional piece of furniture is only revealed to the user when open: the soft entity emerges to reveal a complete sink unit.

Compactness of the Space shuttle brand.

This is what the bathroom and kitchen of the future could look like. No wonder that HI-MACS® was the material of choice for these highly attractive design studies. The superlative appearance and total functionality are pioneering even today.



All images on this page: Photographed by Marcus Peel Photography



Photographed by Hasse Bengtsson

Private kitchen

| | |
|-------------------------|----------------------------------------------|
| Location: | Nassjö, Sweden |
| Design and Fabrication: | LG Collection, Sweden, lgcoll.se |
| Material: | HI-MACS®, S212 Light Green, S28 Alpine White |

Freshness for the kitchen.

Sometimes colour is the decisive factor: so then it's good that HI-MACS® is available in 94 colours to create just the right tone. For instance, Light Green and Alpine White for this minimalist, springlike fresh kitchen.

BATH

Thanks to its waterproof surface and the extensive range of washbasins, HI-MACS® is simply meant to be used in bathrooms. The warm, pleasing feel of the material wins you over from the very first touch. And its ease of care comes free of charge!

Literally made from a single section.

This compact bowl unit brings together all the necessary functions in the most compact space. An interesting feature: the bowl unit with its cut-out towel-holder, flush integrated bowl and raised shelf area, is made by thermoforming from a single panel. Only the skirting and the drawer fronts were made from separate sections.



Bath furniture

Location: Bremen, Germany

Design: ellenbergerdesign, Germany,
ellenbergerdesign.de

Fabrication: Anders, Germany,
Klöpfer Surfaces, Germany, kloepfer-surfaces.de

Material: HI-MACS® Alpine White



Yellow, green, white.
This bathroom stands out with its skilful combination of HI-MACS® Lemon Squash, Light Green, Banana and White. The colour coordination between the yellow furniture fronts and custom moulded sink with bright yellow base, fitting almost seamlessly into the white countertop, is an extremely interesting solution. This design also dispenses with handles, which are cut directly into the HI-MACS® cupboard doors.



Private Bathroom

Location: Bucharest, Romania

Design: Arh. Adriana Tihon, Atvangarde
Design Team, Romania

Fabrication: Atvangarde Surfaces,
Romania, himacs.ro

Material: HI-MACS®, Alpine White, Banana,
Lemon Squash, Light Green, Gray



All images on this page: Photographed by ©Still Pictures

Wet room at Barn conversion

Location: West Sussex, United Kingdom

Design and Fabrication:

Solidity Ltd, UK, solidity.co.uk

Material: HI-MACS®, Alpine White

The entire bathroom is a shower.

The design freedom HI-MACS® provides enters a whole new dimension in this bathroom: the bowl, but above all, the entire floor and the wall and furniture panels are all made of HI-MACS®. Water cannot damage the material, thanks to its imperviousness, and thus you can safely shower in the entire room – no need for a shower curtain or splash guard.

Why top designers choose HI-MACS® again and again.

HI-MACS® offers a fantastic combination of creative freedom, aesthetic appearance and functional benefits – the sky's the limit for creative designers. Rifra product designers thus also chose HI-MACS® for their new bathroom range. An interesting detail: the barrel-shaped bowl unit dispenses with a traditional plug, letting the water out through a narrow gap between the base of the bowl and back of the bowl interior.



All images on this page: Photographed by Tiziana Arici



Rifra

Location: Milan Design Week

Design: Rifra, Italy, rifra.com

Fabrication: Dform, Italy, dform.it

Material: HI-MACS®, Alpine White

FURNITURE DESIGN

Whether it is used for hexagonal tables with internal lighting, honeycomb-shaped shelving, engraved counters or thermoformed seating, HI-MACS® provides limitless design options. Its versatility produces furniture creations that could otherwise not be achieved using conventional materials.



Bloc Projects

Location: Sheffield, UK
Design: Studio Polpo, UK, studiopolpo.com
Fabrication: WALL™ (We Are Limitless Limited), UK, walldesignstudio.co.uk
Material: HI-MACS® Alpine White



This desk is a veritable space saver.
Oriented strand board and HI-MACS®: no two materials could be more different. OSB is usually used for shipping crates and HI-MACS® ... well is just HI-MACS®. However, it is precisely the contrast between these two materials that creates the excitement of this design, which gains in elegance, precision and worth through the Alpine White HI-MACS®.

The rectangular container fits precisely into the recess in the second table element. (Requiring the high-precision machinability of HI-MACS®.)

DIZZY

Location: Huskvarna, Sweden
Design: Federico Churba, Argentina,
federicochurba.com.ar
Fabrication: Karl Andersson & Söner,
Sweden, karl-andersson.se
Material: HI-MACS®, Alpine White

Just a bit skew.
The tops of premium furniture manufacturer Karl Andersson & Söner’s occasional tables are also practical trays. And as they are made of HI-MACS®, the thermoformed discs also feel ultra-pleasing to touch.



All images on this page: Photographed by Sam Sylven



All images on this page: Photographed by Controuluce Studio Fotografico

MDF Italia Furniture Collection

Location: Italy
Design: Bruno Fattorini, Italy,
fattorini-rizzini-partners.com
Fabrication: MDF Italia, Italy, mdfitalia.it
Material: HI-MACS®, Alpine White



Uniqueness lies in the smallest details.
This MDF Italia table is brought to life by the mix of visual lightness and its high-quality feel. The 9 mm table top is sunken into the base, making the HI-MACS® edge of the table appears visually extremely slim.

EDUCATION

When it comes to educational buildings, the users are usually young people. HI-MACS®' extreme toughness and ease of maintenance are thus the best prerequisites to withstand everyday life in nursery schools, schools, universities and other institutions. What is more, with its 94 colours, HI-MACS® also provides visual stimulus and inspiration.

Like pastel-coloured sweets.

You can literally feel that it must be such a pleasure to use this sink unit in a Swiss nursery school. This is also true for the children and care staff who can clean the bowls with extreme ease: A damp cloth for light dirt and a mild abrasive cleaning agent and pads for tougher stains.



Kindergarten

Location: Cadepezzo, Switzerland
Design: Herrmann Flavio, Switzerland
Fabrication: IL Falegname Fabrizio Sagl, Switzerland, ilfalegname.ch
Material: HI-MACS® Alpine White, Sky Blue, Banana, Light Green, Sapphire, Ruby, Emerald

All images on this page: Photographed by Claudio Bader

OUTDOOR

Materials used outdoors are exposed to the weather all year round. This means sun and rain, snow and ice and therefore a lot of moisture and very different temperatures as well as strong UV rays. HI-MACS® has passed all the required tests with a selection of 15 colours and thus considerably broadens the design options available to architects when designing for the outdoors.

Pool is Cool

Location: Berlare, Belgium
Design: Kletz, Belgium, kletz.be
Fabrication: SAAM, Belgium, saam.be
Material: HI-MACS® Alpine White



All images on this page: Photographed by Kletz

A pool with a white frame.

The surround of this pool in the Belgian town of Berlare is made of white HI-MACS® panels. This material is almost seamlessly machined, creating a single large area which sets off the entire pool and, at the same time, is perfect to maintain, as it has a limited number of joints where dirt can accumulate. The material was given a coarse sanded finish to make the floor surface slip-resistant.

AIRPORT

Desks, counters and shelving at airports are exposed to extremely heavy and constant use and being touched by travellers and staff alike. Thanks to the easy-care and exceptionally wear-resistant solid surface material HI-MACS®, the fixtures will look just as modern and clean even after many years of use.



Column Cladding at Paris Charles de Gaulle Airport

Location: Paris, France
Designer: Marc Fidelle and Andrei David, Direction de Ingénierie et de l'Architecture d'Aéroports de Paris, France, aeroportsdeparis.fr
Fabrication: LCCA, France, lcca.fr
Material: HI-MACS®, Alpine White



Only flying is better?
 Thousands of passengers, an infinite volume of baggage, tremendous to-ing and fro-ing- these extreme circumstances can often occur at airports which demand the ultimate from its interior architecture. HI-MACS® has proven itself over and over again in recent years to be an extremely durable material. In addition, its versatility and superior appearance are the best prerequisites for successfully coping with whatever occurs day to day in the airport.

All images on this page: Photographed by Matthieu Ducros

MARINE INDUSTRY

A new composition of HI-MACS® has been developed for use in shipbuilding: HI-MACS® FR, which has been awarded the IMO certificate module B and D in compliance with the Marine Equipment Directive for its fire resistant and low spread of fire properties.



Ship ahoy!
 The entire cockpit of this yacht has been made out of visually seamless, fire-resistant HI-MACS® and the instruments and control panels have been integrated directly into the material itself.

Sustento New

Location: Belgium
Fabrication: Elft bvba - Interieurinrichting, elft.be
Material: HI-MACS®, Alpine White

BEST OF THE LAST DECADE

Within the last years HI-MACS® found its way in the awareness of numerous great architects and designers - some very well known, some on their way up. Thanks to their ability and talent some architectural master-pieces have been realized with HI-MACS®. A selection of those can be found here.

Photographed by Werner Hufthmacher



Händel House

Location: Halle, Germany
Design: Gerhards & Glücker, Germany, gerhardsgluecker.com
Fabrication: Möbel Damm, moebel-damm.de
Material: HI-MACS®, Arctic White

Baroque forms to honour a baroque musician.
This building to honour the great musician Georg Friedrich Händel transitions from an understated exhibition and reception area to an opulent Baroque hall. HI-MACS® links and enables both: the ornamental splendour as well as the subtle play of lights.

Hotel Puerta America

Location: Madrid, Spain
Design: from left to right: Christian Liaigre, France – Ron Arad, UK – Zaha Hadid Architects, UK – christian-liaigre.fr, ronarad.co.uk, zaha-hadid.com
Material: HI-MACS®, Alpine White, Black, Fiery Red

19 well known architects and designers designed this hotel - naturally using HI-MACS®.
The result of their work is simply breathtaking, with every room being a veritable stand-alone masterpiece. HI-MACS® was with them every step of the way - inspiring the designers to create their most daring designs.

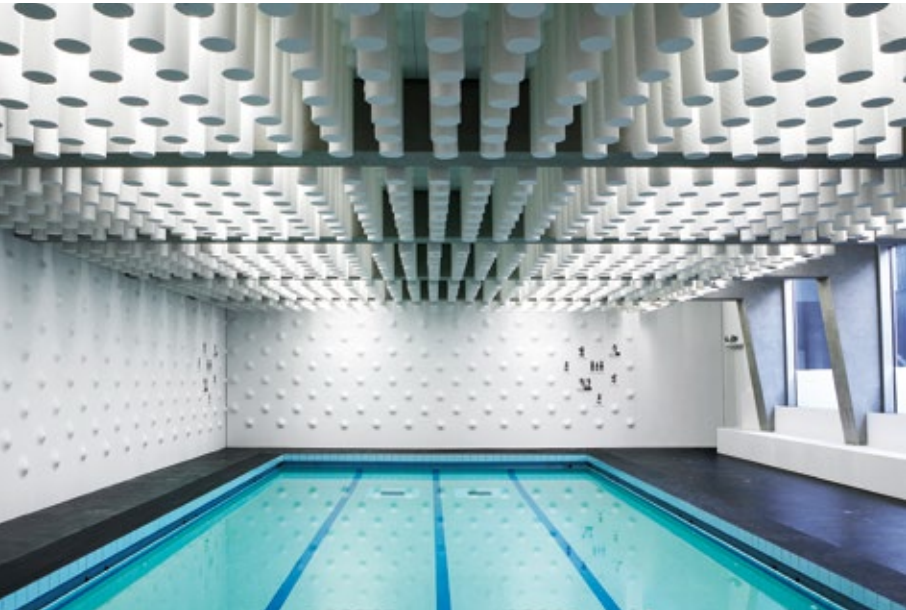
All images: Photographed by diephotodesigner.de



Atlas Swimming Pool

Location: Paris, France
Design: Yonseux Architectes, France, yonseux.com
Fabrication: ASKA Interior, France, aska-interior.com
Material: HI-MACS® Arctic White

Where the new generation enjoys cool wetness.
This indoor swimming pool in a Parisian school was designed mainly with HI-MACS®: parts of the exterior walls, the geometrical relief on the walls, the non-slip floor in the shower area and many individual items of furniture were all created in HI-MACS® Arctic White. Its perfect hygiene and ultra-flexible mouldability are positive properties of the material, which also gives the space a unique atmosphere.



Photographed by Alexandra Mocanu



All images: Photographed by Jan Bitter



Raiffeisen Bank Zürich

Location: Zürich, Switzerland
Design: NAU Architecture, Switzerland, Drexler Guinand Jauslin Architekten, Switzerland, nau.coop, dgj.ch
Fabrication: Wallcovering patterns design: ROK, Rippmann Oesterle Knauss, Switzerland, rok-office.com – Wallcovering and joinery: Glaeser Baden, Switzerland, glaeser.ch
Material: HI-MACS®, Alpine White

Breathtaking effect thanks to HI-MACS® and a brilliant idea.
The Raiffeisen Bank in Zurich displays the portraits of former prominent residents that stand out thanks to the intricate cutting of triangles of different sizes and the outstanding overall interior architectural design.

Showroom ALV

Location: Milan, Italy
Fabrication: Flusso, Facchinetti Group
Material: HI-MACS®, Ivory White

Look this way please.
The central and pivotal element in this showroom is a circular filigree skeleton made of HI-MACS® that gives perspective to the fashionable accessories.



Photographed by Valter Baldan Fotografo

SHAPING THE FUTURE. IN HARMONY WITH THE ENVIRONMENT.

Countless internationally recognized certificates attest to the fact that HI-MACS® has a strong focus on ecological aspects. Without exception, all HI-MACS® products are manufactured in accordance with the ISO 14001 environmental standard.

- **Composition:** aluminium trihydroxide, the main component of HI-MACS®, is a bi-product of aluminium production.
 - **Manufacturing:** The production of this material is marked by an excellent energy balance. In addition, HI-MACS® plants in Cheongju (Korea) and Atlanta (USA) meet all environmental standards.
 - **Transport:** The material is transported from the USA to Europe exclusively by ship. Within Europe, HI-MACS® observes the Euro-5 standards for reduced particulate emissions. The partner-network of LG Hausys Europe is selected thoroughly: the transport partner for Europe guarantees
- recycling of waste water, uses solar energy in the warehouse and trucks that run on gas. Therefore the LG Hausys-partner was awarded with the Green Truck Award 2013.

 - **Processing:** The material allows for virtually waste-free processing.
 - **Commitment:** LG Hausys conducts and publishes regular environmental audits along with energy consumption analyses. Thanks to the use of non-polluting fuels, greenhouse gas emissions have been cut by 15,000 tons per year since 2008.



**The Eden collection.
Eco-friendly through and through.**

The Eden colour collection by LG Hausys is the most environmentally friendly solid surface material available on the market today. This one-of-a-kind colour palette consists of up to 35% recycled materials and is available in 8 warm, natural shades.

The Eden collection has been recognized by the U.S. Scientific Certification System for the large proportion of recycled material it uses. Further, projects made from HI-MACS® Eden are eligible for LEED (Leadership in Energy and Environmental Design) certification from the U.S. Green Building Council, and up to may receive up to 2 credits in various LEED categories. Another solid and sustainable reason to choose HI-MACS®.

SINKS AND BOWLS

Every option is available to designers to create neat washrooms, kitchens, hospitals and much more with our wide range of HI-MACS® sinks and bowls. Perfectly coordinated and ideal for mixing and matching, the bowls and sinks guarantee a modern look that is easy and simple to look after.

HI-MACS® Bowls
HI-MACS® bowls offer superb ease of cleaning and a warm and pleasant feel, making them the ideal solution for creating the bathroom of your dreams. They are manufactured using a casting process and ideally suited for both flush mounting and installation into a bathroom vanity top.



HI-MACS® Baby Bath
Nothing less than the maximum level of hygiene, ergonomics and warmth is good enough for the neonatal ward of any hospital. With ultra-soft corners and contours ergonomically designed specifically for babies, the new HI-MACS® Baby Bath is the perfect product for babies’ first baths of their lives.

HI-MACS® Sinks
HI-MACS® sinks are produced using a high-quality casting technique. No matter which product you choose from our extensive, eminently combinable selection, all sinks are flush-mounted into the countertop or installed below the surface. Special custom-made creations are also an option.



Dimensions - Sheet material

Standard Format

| Sheet thick- ness in mm | Sheet width in mm | Sheet length in mm |
|----------------------------|----------------------|-----------------------|
| 3 | 930 | 3000 * |
| 6 | 760 | 2490 |
| 6 | 910 | 2490 * |
| 9 | 760 | 3680 |
| 9 | 910 | 3680 * |
| 12 | 760 | 3680 |
| 12 | 910 | 3680 * |
| 12 | 1350 | 3680 * |
| 19 | 760 | 3680 * |

* Only available in S28 Alpine White.
** Only available in S01 Satin White, S05 Grey, S06 Arctic Granite, S09 Cream, S22 Black, S25 Fiery Red, S104 Toffee Brown, S201 Nougat Cream.
*** Only available in S28 Alpine White and S06 Arctic White.
**** Only available in Solid colours.

Special Format

| Sheet thick- ness in mm | Sheet width in mm | Sheet length in mm |
|----------------------------|----------------------|-----------------------|
| 3 | 930 | 3000 ** |
| 6 | 910 | 2490 *** |
| 9 | 910 | 3680 *** |
| 12 | 910 | 3680 *** |
| 12 | 1350 | 3680 *** |
| 19 | 760 | 3680 **** |

Size matters - to increase efficiency and reduce offcuts
HI-MACS® can be supplied in different sheet thicknesses, formats and sizes. Ideal for maximum cutting, minimum wastage and minimal costs. However, not all colours are available in any thickness. Please see the colour charts on the following pages for exact availability.

HI-MACS® fire resistant quality significantly widens the fields of application
HI-MACS® FR-version sheets are available in S728 Alpine White and manufactured to order in S801 Nougat Cream, S729 Ivory White, S706 Arctic White and S705 Grey.

Sheets in S728 Alpine White comply with the IMO Standard Modules B+D and M1. FR sheets are especially suitable for use in public buildings, external facades and in the marine industry.

Technical data sheet

HI-MACS® is extremely repellent to dirt and wear and tear, so that you can enjoy many years of pleasure with the outstanding quality of your new product.

| Specification | Unit | Result | | Test methods |
|-------------------------------------------------------------------------------------------------------------------------------------------------------------|-----------------------|-----------------------------------------------------------------------------------------------------------------------------------------------------|-----------------------|-------------------------------------------------------------------------------------------|
| | | Solids | Granite | |
| Flexural-E-modulus | MPa | 8900 | 7730 | DIN EN ISO 178 |
| Flexural strength | MPa | 70.1 | 64.3 | ASTM D638 |
| Breaking elongation | % | 1 | 1.1 | DIN EN ISO 178 |
| Tensile strength | MPa | 69.5 | 56.3 | DIN EN ISO 527 |
| Density | g/cm³ kg/m³ | 1.75 1750 | 1.65 1650 | ISO 1183 ISO 1183 |
| Ball indentation hardness | N/mm² | 257 | 239 | DIN EN ISO 2039-1 |
| Mohs hardness | | 2 bis 3 | 2 bis 3 | EN 101 |
| Pencil hardness | | >9H | >9H | ISO 15184 |
| Water absorption weight strength/thickness | | <0,1% <0,1% | <0,1% <0,1% | DIN EN 438 Part 12 |
| Impact resistance impactor drop ball test (fall height) | N mm | ≥25 ≥1500 | ≥25 ≥1500 | E DIN EN 438, 02/02 Part 2/20 E DIN EN 438, 02/02 Part 2/21 |
| Slip resistance | | >0,32 - 0,9 | | GMG100 (replaces R9) |
| Slip resistance | | angle of acceptance of more than 10° to 19° = R10 | | DIN 51130 |
| Climate change resistance | °C | ≥0,05 | ≥0,05 | AMK |
| Dry heat (pan base) | °C | ≥100 (7C) | | DIN 68 861, Part 7, 04-'85 |
| Damp heat (pan base) | °C | ≥100 (7C) | | DIN 68 861, Part 8, 04-'85 |
| Temperature change resistance | °C | no change | | UNI 9429 |
| Resistance to cigarette burns | | 6C | 6B | DIN 68 861, Part 6, 11-'82 |
| Scratch resistance | | 4D | 4B | DIN 68 861, Part 4, 11-'81 |
| Electrostatics Conductivity | >1x10 ¹² Ω | insulating non-conductive | | DIN IEC 1340-4-1, 04-'92 EN 61340-5-1 |
| Thermal conductivity | W/mK | 0.636 | 0.55 | DIN EN 12664 |
| Thermal resistance | m²K/W | 0.038 | 0.045 | DIN EN 12664 |
| Thermal expansion co-efficient | mm/mK m/m/°C | 0.048 30.0 x 10 ⁻⁶ | 0.055 | DIN EN 14581 |
| Water vapor transmission properties - diffusion resistance factor | µ | 18607 | 16150 | DIN EN ISO 12572 |
| Dimensional change by change in relative humidity length thickness mass | % % % | -0.03 0.06 0.05 | -0.02 0.03 0.05 | DIN EN 318, edit. 5, 1998 |
| Resistance to boiling water increase in weight increase in thickness | % % | <0,1 <0,1 | >0,1 <0,1 | E DIN EN 438, 02/02 Part 2/12 |
| Light fastness (Xenon) | scale 0 - 10 | better than 6 | better than 6 | DIN 53 387, 04-'89 |
| Food tolerance | | suitable for all colours | | LMBG § 31 |
| Hygiene | | suitable | suitable | LGA Hygiene Certificate |
| Fire protection classification Flame-retardant properties MPA/NRW HI-MACS® MPA/NRW (BAM) 12 mm (BAM) 9 mm + back-up (Bodycote/Warrington) 12 mm | | B1 non-dripping material B1 for all colours* B1 for all colours* B-s1 , d0 for all HI-MACS® colours* complies with BS 476 class 0 | | DIN 4102-1 DIN 5510 DIN 4102-1 BS EN ISO 11925-2 : 2002 BS EN 13823: 2002 |
| * not currently applicable to Marmo, Galaxy, Volcanics, Lucent and Eden | | | | |

COLOURS

Colours are key in design. Elegant Nordic White, warm Toffee Brown or mystical Cima.

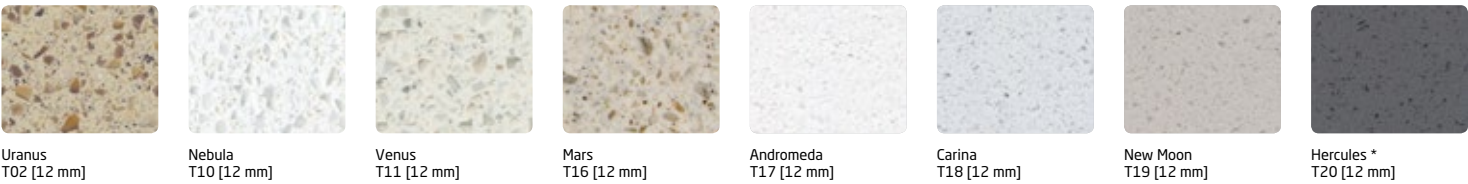
We have whatever colour you want - it’s your choice.

Extra service on demand

If needed, LG Hausys Europe can produce different dimensions and bespoke colours. To learn more about the conditions, please contact us on www.himacs.eu

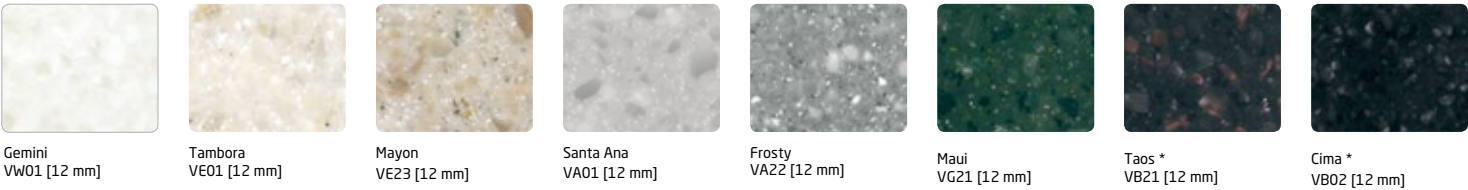
Galaxy

With transparent grains and mother of pearl shimmer, as if from another world.



Volcanics

Full of depth and mysticism, akin to a precious natural stone but with all of the advantages of “Natural Acrylic Stone”.



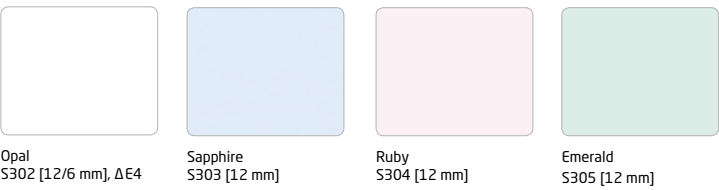
Marmo

You will be captivated by its random veined texture, reminiscent of marble.



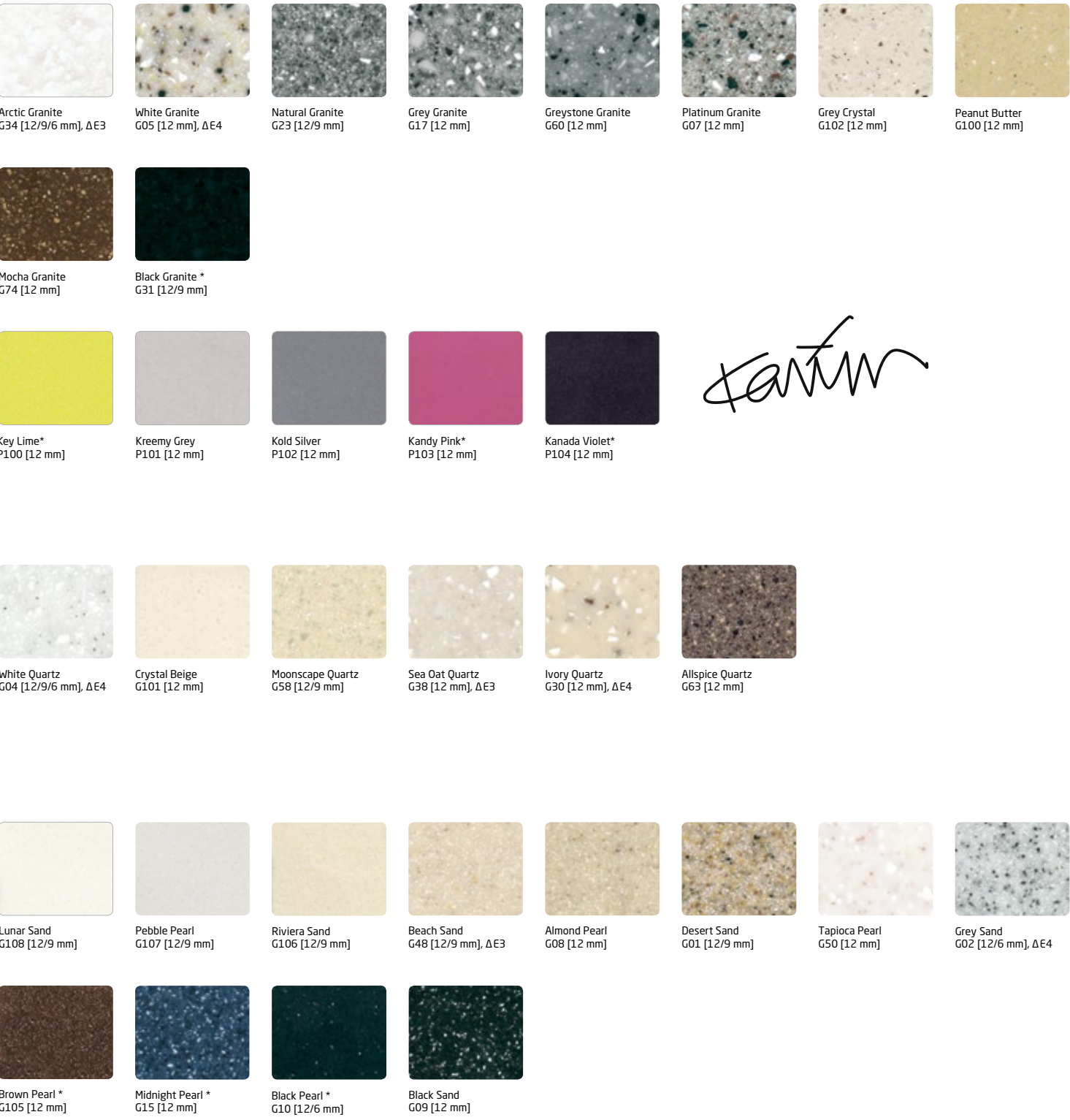
Lucent

When combined with precisely positioned light sources, the translucent pastel shades become transformed into dramatic design “highlights”.



Granite, Sparkle, Quartz, Sand & Pearl

A huge selection of textures and colours. Natural, elegant and perfect to combine.



Solids

From elegant to extravagant, classic to ultra-contemporary – this is a limitless collection.



Nordic White
S033 [19/12 mm] ΔE4



Alpine White
S28 [19/12/9/6/3 mm] ΔE3



Diamond White
S034 [19/12 mm] ΔE4



Arctic White
S06 [19/12/9/6/3 mm]



Ivory White
S29 [19/12/9/6 mm] ΔE4



Satin White
S01 [19/12/9/6/3 mm]



Cream
S09 [19/12/6/3 mm] ΔE3



Nougat Cream
S201 [19/12/3 mm]



Almond
S02 [19/12 mm], ΔE3



Babylon Beige
S102 [19/12 mm]



Concrete Grey *
S103 [19/12 mm]



Carmenere *
S110 [19/12 mm]



Toffee Brown *
S104 [19/12/3 mm]



Marta Grey *
S108 [19/12 mm]



Light Green *
S212 [19/12 mm]



Lemon Squash *
S106 [19/12 mm]



Banana *
S26 [19/12 mm]



Orange *
S27 [19/12 mm]



Florida Orange *
S105 [19/12 mm]



Fiery Red *
S25 [19/12/3 mm]



Festival Pink *
S116 [19/12 mm]



Chiffon
S113 [19/12 mm]



Steel Grey *
S109 [19/12 mm]



Grey
S05 [19/12/9/6/3 mm]



Midnight Grey *
S117 [19/12 mm]



Sky Blue
S203 [19/12 mm]



Deep Indigo *
S115 [19/12 mm]



Dark Night *
S111 [19/12 mm]



Coffee Brown *
S100 [19/12 mm]



Black *
S22 [19/12/9/3 mm]

19 mm: S28 Alpine White available in stock. All other solid colours on special order only.
3 mm: S28 Alpine White available in stock. S01 Satin White, S06 Arctic White, S09 Cream, S104 Toffee Brown, S05 Grey, S201 Nougat Cream, S25 Fiery Red and S22 Black on special order only.

The basic HI-MACS® material is identical for every colour but it is important to note that darker and more heavily pigmented colours will show dust, scratches, haziness, marks left by hard water and other ordinary wear and tear more noticeably than lighter textured colours. Therefore colours marked with a * are less suitable for applications that are exposed to extensive surface contact such as worktops located in heavy traffic area as an example.
Due to specific characteristics and properties of the Marmo colours, which have a veined effect, special consideration has to be taken into account with jointing and the use of coved up-stands. Veining may vary from sheet to sheet.
There may be deviations between the illustrated and actual colours owing to printing techniques.
To receive the detailed availability, please contact us at www.himacs.eu.

15 HI-MACS® colours are particularly suitable for outdoor applications because of their good UV-resistance. HI-MACS® offers a 5 years warranty on colours’ UV resistance for a tolerance of ΔE3 to ΔE4 and loss of gloss over 40%, 10 years on colour leaching and 20 years on colour peeling, swelling or delaminating. The warranty is applicable after the first installation and is only valid for the sheet material; adhesives are excluded. The conditions for this warranty are based on practical experience and on-going tests.

A STRONG PARTNER.
FOR YOUR BOLDEST IDEAS.

Architects, designers and artisans appreciate HI-MACS® as a competent partner capable of taking on any challenge. We are happy to advise you during the planning and development phase and assist you in the successful implementation of your project. We have experienced representatives throughout Europe who can provide you with active support. Contact us today!

www.himacs.eu

Eden

A one-of-a-kind palette with warm natural shades and various grain sizes. What makes the collection unique: it consists of up to 35% recycled materials.



Cocoa
G501R [12 mm]
12% Recycled Content



Sugar Maple
G510R [12 mm]
35% Recycled Content



Poplar
G511R [12 mm]
35% Recycled Content



Birch Bark
G514R [12 mm]
35% Recycled Content



Pecan
G515R [12 mm]
35% Recycled Content



Hickory
G516R [12 mm]
35% Recycled Content



Mountain Ash
G517R [12 mm]
35% Recycled Content



Ripe Cotton
G518R [12 mm]
35% Recycled Content

The Eden collection is available upon special request. More information about this range and its environmental benefits can be found on pages 8 and 9 of this brochure.

Scoring eco-credits across the board.

The LEED (Leadership in Energy and Environmental Design) seal is a proven classification system for ecological, resource-saving and sustainable construction. The credit-based certification process rates buildings on a number of different criteria. Opting for HI-MACS® Eden in new construction and renovation projects may provide up to 2 credits in the following LEED categories:

- Indoor Environmental Quality (IEQ)**

LEED IEQ 4.1: low-emission materials, adhesives and sealants (1 credit)
- Materials & Resources (MR)**

LEED MR 4.1: materials with more than 10% recycled content (1 credit)

LEED MR 4.2: materials with more than 20% recycled content (2 credits)

MORE REFERENCES ON www.himacs.eu

WE WOULD BE PLEASED TO PROVIDE YOU
WITH DETAILS AND INFORMATION.
HI-MACS®. The New Generation.

LG Hausys Europe GmbH
Avenue des Morgines 12
CH -1213 Petit-Lancy,
Geneva - Switzerland

Tel: +41 (0)22 879 54 80
Fax: +41 (0)22 879 54 89

HI-MACS® and Natural Acrylic Stone™ are registered trademarks of LG Hausys Europe GmbH. All other trademarks and product names are trademarks or registered trademarks of their respective rights owners. The information contained in this brochure is intended to be for information only and can be amended at any time without prior notification. ©2015. LG Hausys Europe GmbH. All rights reserved.

Publisher's Details

SD Engineering, sd-engineering.com | Abalit Elementos Moldeados, abalit.com | ADJ, adj.fr | Alexander Fansalu | Alexandra Mocanu, alexandramocanu.com | AMA Arquitectura de Maternidades, arquitecturadematernidades.com | Anders | Arh. Adriana Tihon, AtvanguardDesign Team | ASKA Interior, aska-interior.com | Atvanguard Surfaces, atvanguard.ro | Bone Solid, bonesolid.nl | Bredt und Partner GbR, bredtundpartner.com | Bruno Fattorini, fattorini-rizzini-partners.com | Bureau SLA, bureausla.nl | Charles Hosea, charleshosea.co.uk | Culimaat High End Kitchens, culimaat.nl | Controluce Studio Fotografico, controlucefoto.com | Claudio Bader, claudiobader.com | Christian Liaigre, christian-liaigre.fr | David Frutos / BIS Images, davidfrutos.com | Dform, dform.it | diephotodesigner.de | Dominik Obertreis, obertreis.com | Drexler Guinand Jauslin Architekten, dgi.com | Elft bvba - Interieurinrichting, elft.be | ellenbergerdesign, ellenbergerdesign.de | Federico Churba, federicochurba.com.ar | Federico Torra | Flusso, Facchinetti Group | Frank Hanswijk, frankhanswijk.nl | Geilert GmbH, geilert-gmbh.de | George Witteveen, witteveenarchitecten.nl | Gerhards & Glücker, gerhardsgluecker.com | Glaeser Baden, glaeser.ch | Hasse Bengtsson, focalfoto.com | Herrmann Flavio | Herman van Heusden, hermanvanheusden.com | Houtwerk BV, houtwerk.nl | IL Falegname Fabrizio Sagl, ilfalegname.ch | Jan Bitter Fotografie, janbitter.de | JB Dörner, jbdorner.net | Jens Lyncker, jenslyncker.de | Jeroen Musch, jeroenmusch.de | Jucalbe Carpintería, jucalbe.com | Karim Rashid, karimrashid.com | Karl Andersson & Söner, karl-andersson.se | Kletz, kletz.be | Klöpfer Surfaces, kloepfer-surfaces.de | Köhler Architekten, koehlerarchitektur.ch | LCCA, lcca.fr | LG Collection, lgcoll.se | Malcolm Crayton and Mike Neale at FORM Design Architecture form-architecture.co.uk | Marc Fidelle and Andrei David, Direction de l'Ingénierie et de l'Architecture d'Aéroports de Paris, aeroportsdeparis.fr | Marcus Peel Photography, marcuspeelphotography.co.uk | Mike Neale | MDF Italia, mdfitalia.it | MVSA Architects, mvsa-architects.nl | Matthieu Ducros, mathieuducros.com | Möbel Damm, moebel-damm.de | NAU Architecture, nau.coop | Nikolaus Herrmann, nikolaus-herrmann.de | Peter Grube, peter-grube.de | Peter Knapp Dach und Fassadentechnik GmbH, knapp-dach.de | Pick Two | Popp Art, Lars Popp & Friends, popp-art.de | preiswerk marek architekten, preiswerkmarek.ch | René van Dongen, dondigi.nl | René Jungnickel, jungnickel-fotografie.de | Rifra, rifra.com | Ron Arad, ronarad.co.uk | ROK, Rippmann Oesterle Knauss, rok-office.com | SAAM, saam.be | Sam Sylvén, fotografisam.se | Schreinerei Thorsten Mayer, schreinereimayer.de | Sebastian Mindroiu | Smeulders Interieurgroep, smeulders-ig.nl | Solidity Ltd, solidity.co.uk | Stelian Popa, stelianpopa.ro | ©Still Pictures | Studio Polpo, studiopolpo.com | Teamplan Josef Mayer GmbH, bankeinrichtungen.com | Thomas Andenmatten, thomasandenmatten.ch | Tiziana Arici, tizianaarici.com | TMA Productions, tma-productions.be | Urbane Kultur Architectes, urbanekultur.fr | Uwe Röder, fotografie-roeder.de | Valter Baldan Fotografo | WALL™ (We Are Limitless Limited), walldesignstudio.co.uk | Werner Berchtold | Werner Huthmacher, wernerhuthmacher.de | Wilson Ortiz, wilsonortiz.com | Xavier Bonte | Yoonseux Architectes, yoonseux.com | Zaha Hadid Architects, zaha-hadid.com | Zeiter + Berchtold AG, zeiter-berchtold.ch