

# FINGER PROTECTION DEVICES

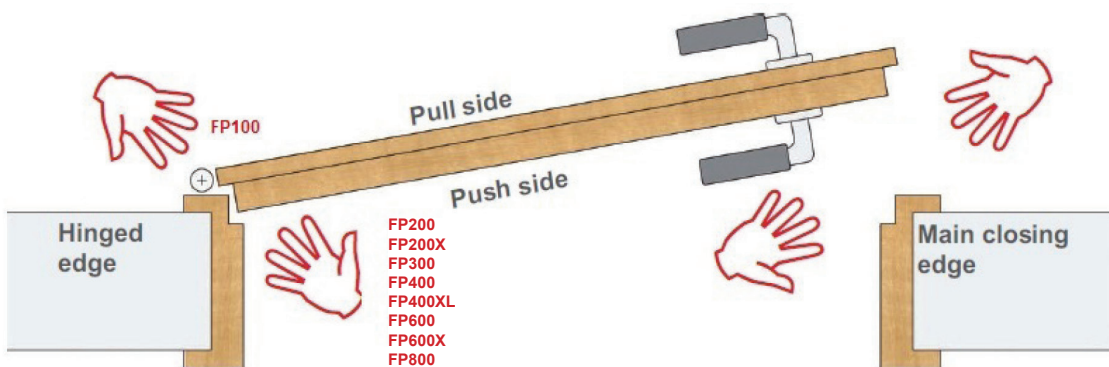
Finger protectors are an economical safety measure to prevent the accidental trapping of fingers between the hinged edge of the door and the door frame; they can be fitted easily and quickly to new or existing doors

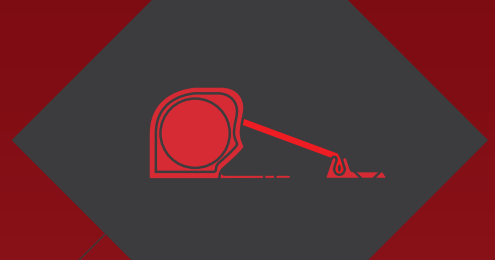


Strand Hardware offer a comprehensive range of finger protectors:

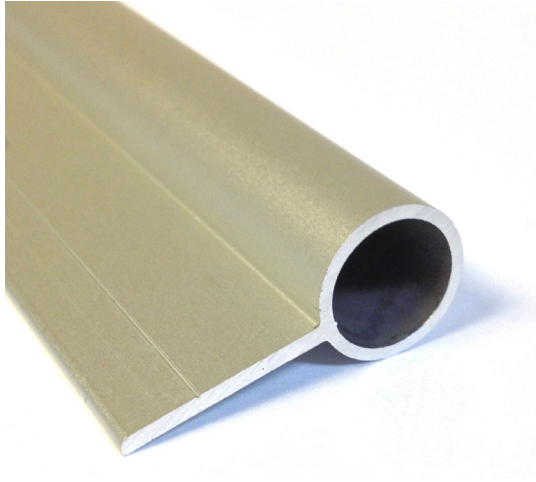
- FP100** Covers the hinge pin side of the door.
- FP200** Covers hinged side of the door.
- FP200X** EN16005 compliant.
- FP300** Exclusively for glass doors.
- FP400** Covers hinged side of the door with concealed fixings.
- FP400XL** Extended opening version.
- FP600** Easy to fit - Clip on
- FP600X** EN16005 compliant
- FP800** External / Internal use.

The FP200, FP400, FP600 and the FP800 have been awarded German Safety Mark and certified to EN16654.





## FP100



### Application

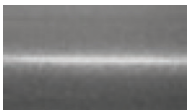
#### Application

- Fitted to most single action doors including automatic doors
- Can be fitted to new doors and retrofitted to existing doors

#### Description

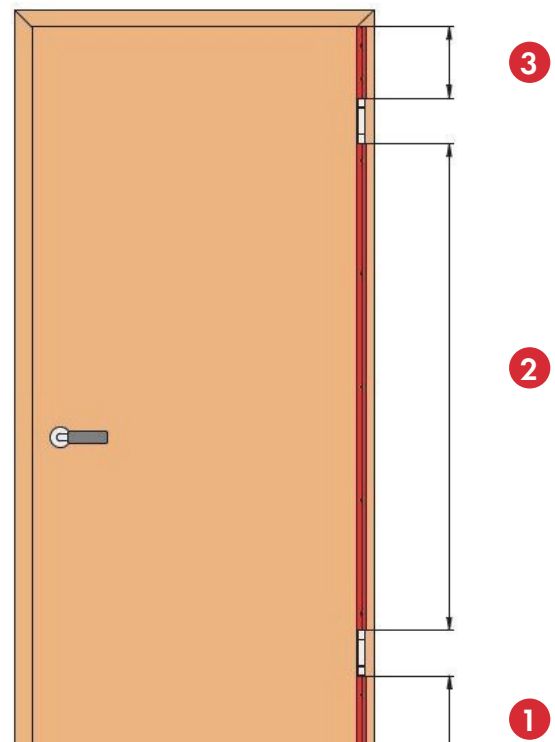
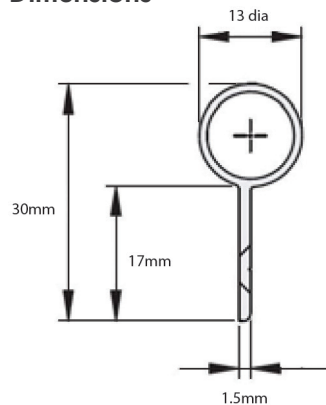
- Designed to be fitted with our roller system finger protectors preventing finger trapping on the hinge pin side of the door (where the small gap is when the door is open- see drawing)
- Supplied in 1.8 metre lengths predrilled and countersunk which can be cut to size and fitted between, above and below hinges
- Suitable for standard 13mm diameter hinges, different diameters available, please enquire
- Supplied with self-adhesive tape to assist with fitting

#### Finish options



Satin Anodised  
Aluminium (SAA)

#### Dimensions



# FINGER PROTECTION DEVICES

## FP200

### Application

- Suitable for most single and double action doors including automatic doors
- Roller system finger protection.

### Description

- Provides effective protection against fingers being accidentally trapped on the hinge side of the door
- Strong fire retardant fabric material is kept under constant tension and is designed to cover the gap between the door and frame automatically when the door is opened
- Features an easy clean aluminium housing

### Technical Data

Roller system specifications:

- Cycle tested to 1,000,000 operations
- Maximum length: 2500mm
- Standard length: 1925mm
- Minimum length: 325mm
- Maximum fabric travel: 260mm
- Suitable for use on 60min fire doors



### Fabric colour

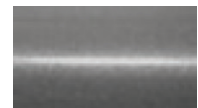


Black

### Housing finish options



White (RAL 9016)



Satin Anodised Aluminium (SAA)



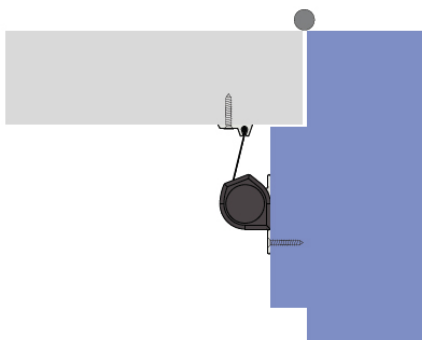
Dark Bronze Anodised (DBA)

RAL colour match available on request (POA). Please contact us to enquire.

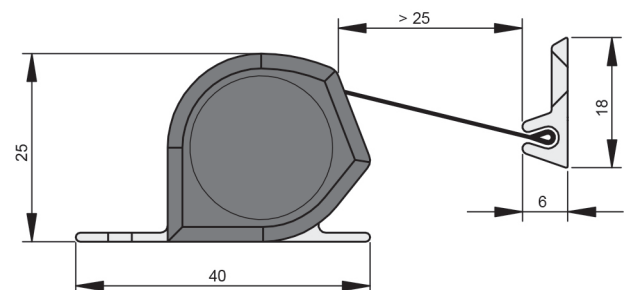
## FP200X

- Standard length: 2015mm
- EN16005 compliant for automatic doors
- Maximum fabric travel: 260mm

### Application

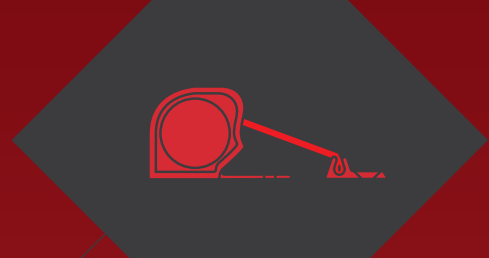


### Dimensions



Awarded German Safety Mark and certified to EN16654





# FP300

## Application

- Suitable for most single and double action doors including automatic doors
- Roller system finger protection
- For glass doors

## Description

- Provides effective protection against fingers being accidentally trapped on the hinge side of the door
- Special model for fitting to glass doors

## Technical Data

Roller system specifications:

- Cycle tested to 1,000,000 operations
- Maximum length: 2500mm
- Standard length: 1925mm
- Minimum length: 325mm
- Maximum fabric travel: 260mm
- Mounted with acrylate-foam high performance tape



## Fabric colour



Black

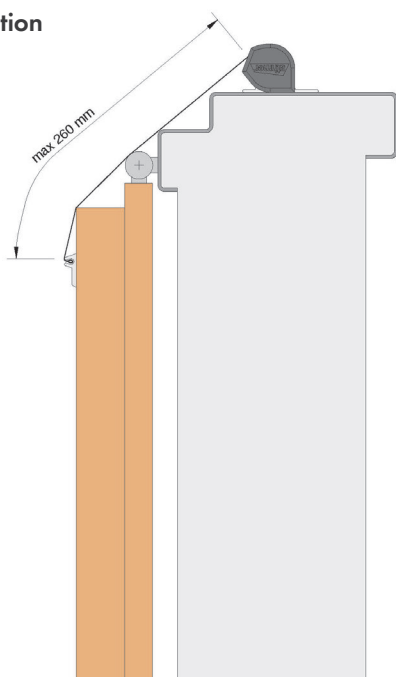
## Housing finish options



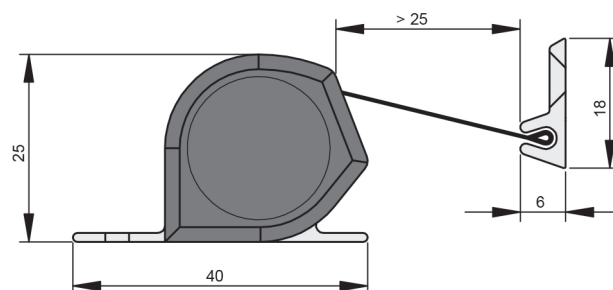
Satin Anodised  
Aluminium (SAA)

RAL colour match available on request (POA). Please contact us to enquire.

## Application



## Dimensions



Awarded German Safety Mark and certified to EN16654



# FINGER PROTECTION DEVICES

## FP400

### Application

- Suitable for most single and double action doors including automatic doors
- Roller system finger protection.

### Description

- Provides effective protection against fingers being accidentally trapped on the hinge side of the door
- Strong fire retardant fabric material is kept under constant tension and is designed to cover the gap between the door and frame automatically when the door is opened
- The housing is designed to conceal screws when in the closed position
- Features an easy clean aluminium housing
- Standard finishes: Satin Anodised Aluminium (SAA), White (EPW) or Dark Bronze (DB) with Black fabric. Other options detailed below to special order

### Technical Data

Roller system specifications:

- Cycle tested to 1,000,000 operations
- Maximum length: 2500mm
- Standard length: 1925mm
- Minimum length: 325mm
- Maximum fabric travel: 260mm
- Suitable for use on 60min fire doors

### Fabric finishes for the FP400



### Roller system specification: FP400 XL

- Designed for situations where a wider gap needs to be covered.
- Fabric only available in black
- Fabric extension length: 320mm
- Maximum length: 2500mm
- Standard length: 1925mm
- Minimum length: 325mm

### Housing finish options for the FP400



White (RAL 9016)



Satin Anodised Aluminium (SAA)



Satin Stainless Steel (SSSP)



Traffic Red powder coated (RAL 3020)



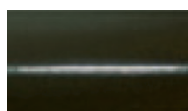
Moss Green powder coated (RAL 6005)



White Aluminium powder coated (RAL 9006)

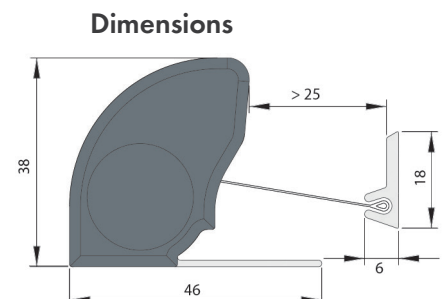
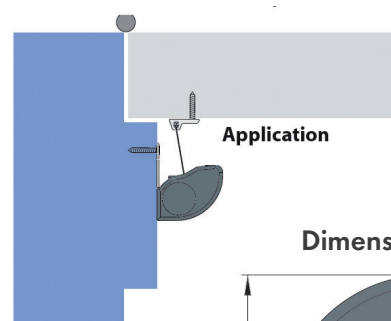


Stone Grey powder coated (RAL 7030)



Anthracite Grey powder coated (RAL 7016)

RAL colour match available on request. Please contact us to enquire.



Awarded German Safety Mark and certified to EN16654





## FP600

### Application

- Suitable for most single and double action doors including automatic doors.
- Internal and External use (specify when ordering).

### Description

- Easy to fit tamper proof CLICK system.
- Provides effective protection against fingers being accidentally trapped in the hinge side of the door.
- Strong fire retardant fabric kept under constant tension covering the gap between the door and frame automatically when door is opened and closed.
- Elegantly shaped cover caps.
- Ram protection available - deflection shield as additional protection (sold separately).

### Technical Data

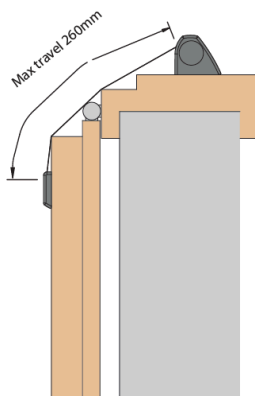
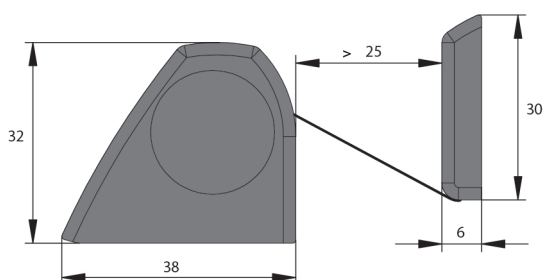
Roller system specifications:

- Cycle tested to 200,000 operations
- Maximum length: 2500mm
- Standard length: 1925mm
- Minimum length: 325mm
- Maximum fabric travel: 260mm

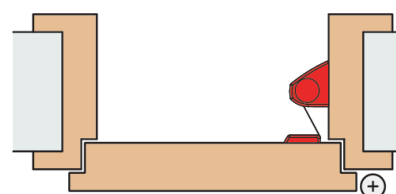
## FP600X

- Maximum length: 2500mm
- Standard length: 2015mm
- Minimum length: 325mm
- Maximum opening: 260mm
- For automatic doors
- EN16005 compliant for automatic doors

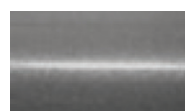
### Dimensions



### Application

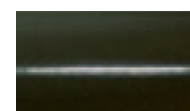


### Housing finish options



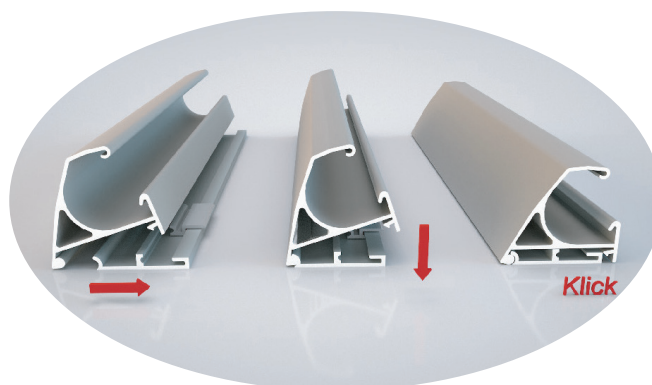
Satin Anodised  
Aluminium (SAA)

### Fabric colour



Black

RAL colour match available on request.  
(POA) Please contact us to enquire.



Awarded German Safety Mark and certified to EN16654



# FINGER PROTECTION

## FP800

### Application

- Suitable for most single and double action doors including automatic doors
- Roller system finger protection
- Weather resistant for external use but can be used internally

### Description

- Provides effective protection against fingers being accidentally trapped on the hinge side of doors
- Weather-proof: Resistant to: rain, snow, frost, foliage, dirt and UV light  
Temperature range: -20 to +50 °C
- Robust Housing with increased wall thickness for extra durability
- Surface is wipeable and easy to clean
- Suitable for sterile environments as can be steam cleaned
- Concealed fixings
- Suitable for retrofitting

### Technical Data

Roller system specifications:

- Cycle tested to 1,000,000 operations
- Maximum length: 2500mm
- Standard length: 1925mm
- Minimum length: 325mm
- Maximum fabric travel: 260mm



### Fabric colour



Anthracite Grey (RAL 7016)

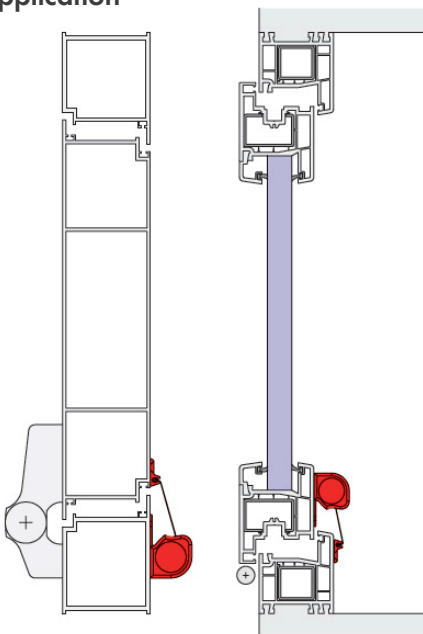
### Housing colour



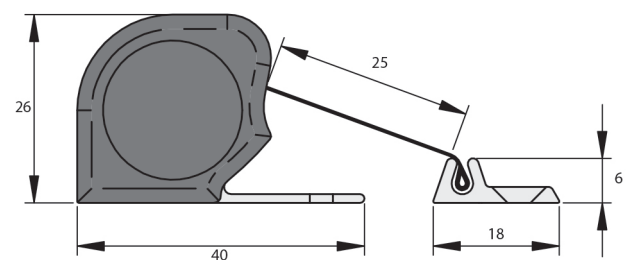
Satin Anodised Aluminium (SAA)

Other Anodised/RAL colours available.

### Application



### Dimensions



Awarded German Safety Mark and certified to EN16654

