

Ecophon Solo™ Triangle

Ecophon Solo Triangle is an acoustic solution, primarily when it is not possible to install a wall-to-wall ceiling. Solo Triangle is suitable in buildings where the room volume could be maintained or as an option when TABS (Thermally Activated Building System) is selected as cooling system.

Solo Triangle is an unframed free hanging unit. The unit is suspended with Adjustable wire hangers and in combination with the engineered Connect Absorber anchor (patent pending) it gives opportunities to create several layers and angles.

The Solo Triangle panel is available in size 1039x1200x40 mm with a weight of 2,5 kg. The panel is manufactured

from high density, 3rd generation glass wool, with Akutex™ FT surface on both sides. The edges are straight cut and painted.

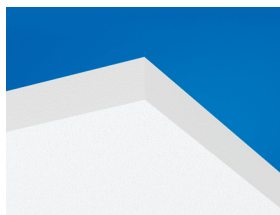


Navigator, Malmö, Sweden

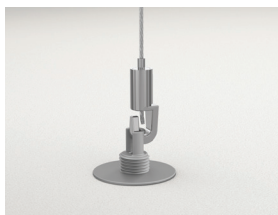
SYSTEM RANGE



Size, mm	1039x1200
Special Fixing	•
Thickness	40
Inst. Diag.	M297



Solo panel



Suspension with Connect Adjustable wire hanger and Connect Absorber



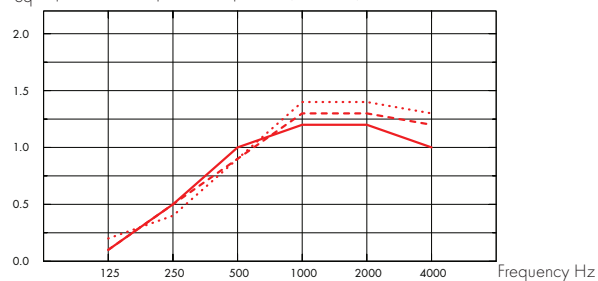
Acoustic

The values in the diagram refer to a single unit. If the units are arranged in a cluster with distances between units less than 0,5 meters, the Aeq per unit will be slightly reduced.

Sound Absorption:

based on test results according to EN ISO 354.

A_{eq}, Equivalent absorption area per unit (m² sabin)



- Solo Triangle 1039x1200, 200 mm o.d.s.
 - - - Solo Triangle 1039x1200, 400 mm o.d.s.
 - ... Solo Triangle 1039x1200, 1000 mm o.d.s.
- o.d.s = overall depth of system

THK mm	o.d.s. mm	A _{eq} , Equivalent absorption area per unit (m ² sabin)					
		125 Hz	250 Hz	500 Hz	1000 Hz	2000 Hz	4000 Hz
40	200	0.10	0.50	1.00	1.20	1.20	1.00
40	400	0.10	0.50	0.90	1.30	1.30	1.20
40	1000	0.20	0.40	0.90	1.40	1.40	1.30



Accessibility

The tiles are demountable.



Cleanability

Daily dusting and vacuum cleaning. Weekly wet wiping.



Visual appearance

White Frost, nearest NCS colour sample S 0500-N, 85% light reflectance (of which more than 99% is diffuse reflection). Retro reflection coefficient 63 mcd/(m²lx). Gloss < 1.



Influence of climate



Indoor Climate

Certificate / Label

Europe

EN
13501-1

M1



Environmental influence

Certificate / Label

Europe

EN
13501-1



Fully recyclable.



Fire safety

Country

Standard

Class

Europe

EN 13501-1

A2-s1,d0

The glass wool core of the tiles is tested and classified as non-combustible according to EN ISO 1182.



Mechanical properties

The tile can take both point loads and distributed loads. See Functional demands, Mechanical properties at www.ecophon.com.



Installation

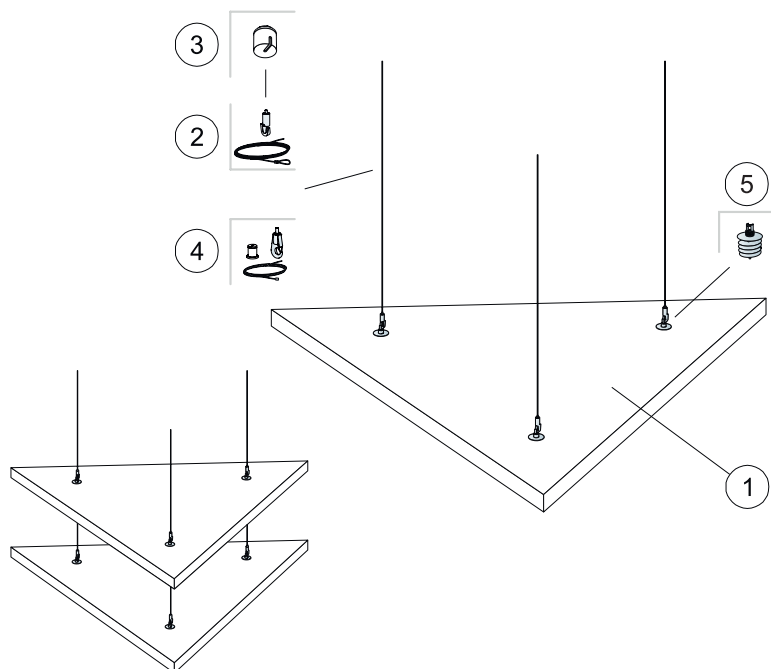
Installed according to installation diagrams, installation guides and drawing aid. For information regarding minimum overall depth of system see quantity specification.



CE

The CE marking confirms important product performance such as sound absorption, emissions, fire safety and load bearing capacity. All Ecophon ceiling products are CE marked according to European standard EN13964, and individual product performance is declared in Declaration of Performance (DoP) documents.

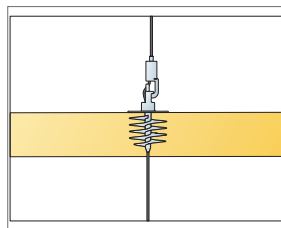
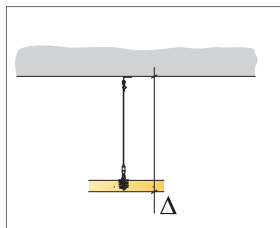
INSTALLATION DIAGRAM (M297) FOR ECOPHON SOLO TRIANGLE



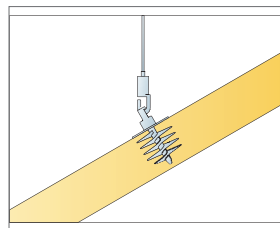
QUANTITY SPECIFICATION (EXCL. WASTAGE)

		Size, mm
		1039x1200
1	Solo Triangle	0,62m ² /panel
2	Connect Adjustable wire hanger (Alt 1)	3/panel
3	Connect Covering cup (Alt 1, Optional)	3/panel
4	Connect Adjustable wire kit (Alt 1, Optional)	3/panel
5	Connect Absorber anchor	3/panel

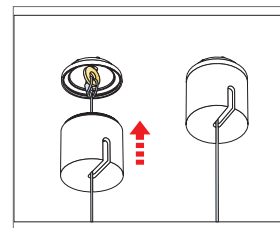
Δ Min. overall depth of system: Δ1 140 mm / Δ2 291 mm / Δ3 121 mm



Panels can be suspended underneath each other



Panels can be installed in angles up to 60°



Installation of Connect Covering cup