

Ecophon Solo™ Square on wall

To increase the sound absorption in the room this system gives you the possibility to install Ecophon Solo™ Square on the wall. The systems give design possibilities, working with different layers and overlapping panels to create various patterns.

Two possibilities exist to fix Solo Square on wall, either Connect™ Hook trim or Connect™ Distance hanger. The Solo Square panel is available in size 1200x1200x40 mm with a weight of 6 kg. The panel is manufactured from high density, 3rd generation glass wool, with Akutex™ FT surface on both sides. The edges are straight cut and painted.



Scientia Academy, Burton Upon Trent, United Kingdom

SYSTEM RANGE



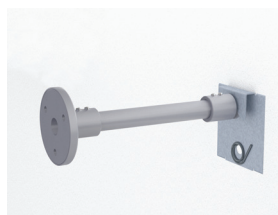
Size, mm	1200x1200
Special Fixing	•
Thickness	40
Inst. Diag.	M307



Solo™ panel



Installation with Connect™ Hook trim and Connect™ Panel hook



Installation with Connect™ Distance hanger and Connect™ Panel hook



Connect Spiral anchor flat as spacer when Connect™ Hook trim is used



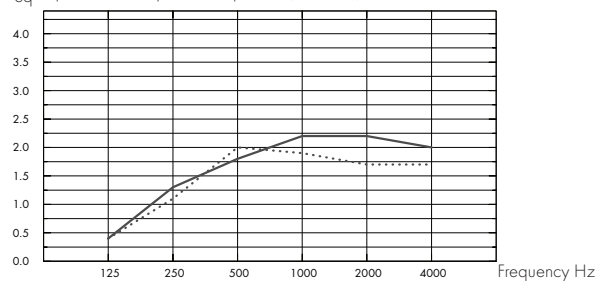
Acoustic

The values in the diagram refer to a single unit. If the units are arranged in a cluster with distances between units less than 0,5 meters, the Aeq per unit will be slightly reduced.

Sound Absorption:

Test results according to EN ISO 354.

Aeq, Equivalent absorption area per unit (m² sabin)



- ... Solo Square on wall 1200x1200, 55 mm o.d.s.
 - Solo Square on wall 1200x1200, 165 mm o.d.s.
- o.d.s = overall depth of system

THK mm	o.d.s. mm	Aeq, Equivalent absorption area per unit (m ² sabin)					
		125 Hz	250 Hz	500 Hz	1000 Hz	2000 Hz	4000 Hz
40	55	0,40	1,10	2,00	1,90	1,70	1,70
40	165	0,40	1,30	1,80	2,20	2,20	2,00



Accessibility

The tiles are demountable.



Cleanability

Daily dusting and vacuum cleaning. Weekly wet wiping.



Visual appearance

White Frost, nearest NCS colour sample S 0500-N, 85% light reflectance (of which more than 99% is diffuse reflection). Retro reflection coefficient 63 mcd/(m²lx). Gloss < 1.



Influence of climate



Indoor Climate

Certificate / Label

Europe

EN
13501-1

M1



Environmental influence

Certificate / Label

Europe

EN
13501-1

Fully recyclable.



CO₂

Kg CO₂ equiv/m²

8,1

From EPD in conformity with ISO 14040



Fire safety

Country

Standard

Class

Europe

EN 13501-1

A2-s1,d0

The glass wool core of the tiles is tested and classified as non-combustible according to EN ISO 1182.



Mechanical properties

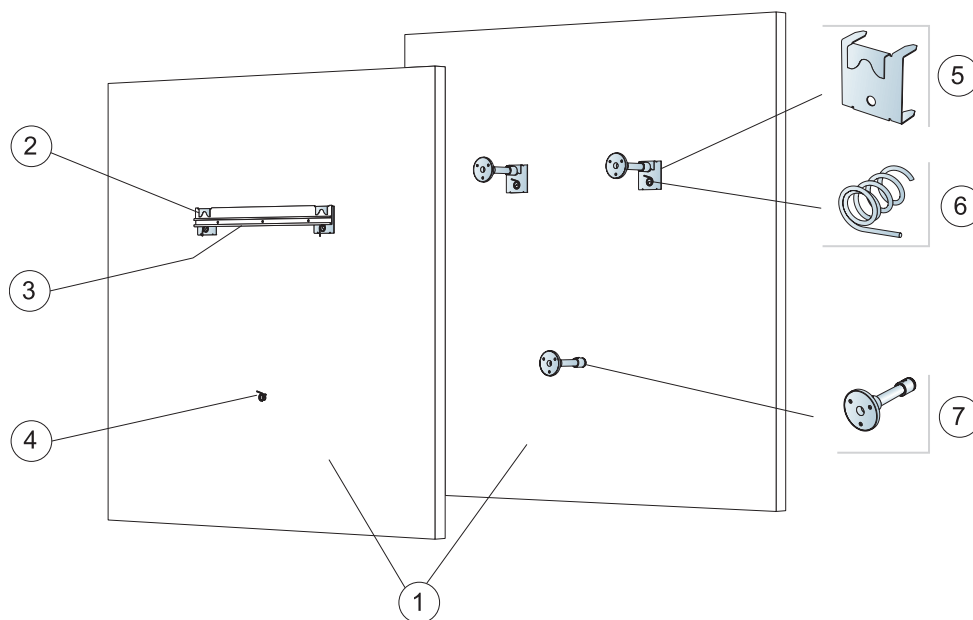
No additional live load is allowed.



Installation

Installed according to installation diagrams, installation guides and drawing aid. For information regarding minimum overall depth of system see quantity specification.

INSTALLATION DIAGRAM (M307) FOR ECOPHON SOLO SQUARE ON WALL

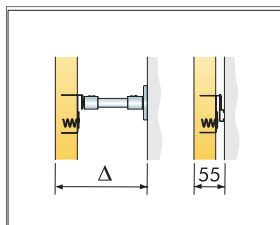


© Ecophon Group

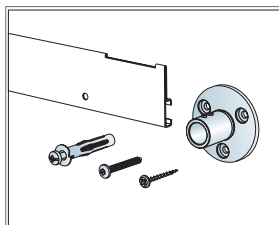
QUANTITY SPECIFICATION (EXCL. WASTAGE)

		Size, mm
		1200x1200
1	Solo Square	1,44m ² /panel
2	Alt. 1 Connect Panel hook (Connect Spiral anchor flat incl. in package)	2/panel
3	Alt. 1 Connect Hook trim (2pcs Connect Spiral anchor flat incl. in package)	1/panel
4	Alt. 1 Connect Spiral anchor flat, used as spacer to wall (incl. in Connect Hook trim package)	1/panel
5	Alt. 2 Connect Panel hook (Connect Spiral anchor flat incl. in package)	2/panel
6	Alt. 2 Connect Spiral anchor flat, used to fix the panel hook in the panel (incl. in Connect Panel hook package)	2/panel
7	Alt. 2 Connect Distance hanger	3/panel

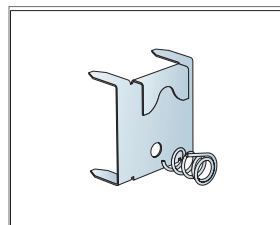
Δ Min. overall depth of system: Δ1 114 mm / Δ2 55mm



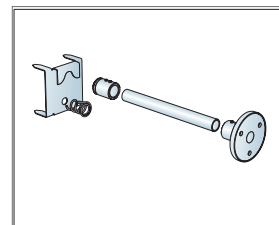
See Quantity specification



Can be used with common fixing solutions



Suspension with Panel hook and Hook trim



Suspension with Panel hook and Distance hanger