

# Ecophon Hygiene Advance™ Wall C3

Ecophon Hygiene Advance Wall C3 is a sound-absorbing wall panel system intended for use in environment where there is a high level of contamination, and where frequent cleaning is required. It is intended for use on walls above the occupied area or where there is no risk for mechanical impact. Examples of applications: in healthcare premises like operation theatres and laboratories with very high requirements on particle emission and disinfection, in food and beverage industries in areas exposed to splatter from different kinds of liquids that require daily cleaning. In kitchens in dishwashing areas with constantly high humidity. The system is classified B1 and B5 for zone 4 according to standard NF S 90-351 and clean room classified according ISO 4.

The system consists of Ecophon Hygiene Advance Wall panel, which has a core of high density, 3rd generation glass woolencapsulated in a smooth high-performance film that is impervious to particles and water. The film is also dirt-repellent and resistant to most chemicals. The fixing details Connect Wall fixing C3 are made of stainless steel wire. The panel is positioned with an airgap of 40 mm to the surface behind allowing for air to circulate and for cleaning. The weight of the system is approximately 3 kg/pcs. The Ecophon Hygiene Advance Wall C3 is a technical system which might have aesthetic variations that will not affect the functionality of the system.



Easyfood, Kolding, Denmark

## SYSTEM RANGE



Size, mm	1 200x600
Special Fixing	•
Thickness	40
Inst. Diagr.	M258



Hygiene Advance Wall



Hygiene Advance Wall C3 system



Connect Wall fixing C3



Connect Wall fixing C3

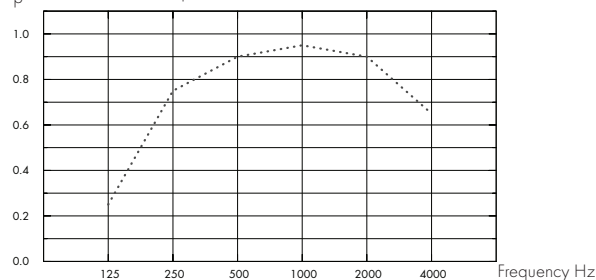


## Acoustic

### Sound Absorption:

Test results according to EN ISO 354. Classification according to EN ISO 11654.

$\alpha_p$  Practical sound absorption coefficient



... Hygiene Advance Wall, 80 mm o.d.s.

o.d.s = overall depth of system

THK mm	o.d.s. mm	$\alpha_p$ Practical sound absorption coefficient						$\alpha_w$	Sound absorption class
		125 Hz	250 Hz	500 Hz	1000 Hz	2000 Hz	4000 Hz		
40	80	0,25	0,75	0,90	0,95	0,90	0,65	0,85	B



## Accessibility

The tiles are demountable.



## Cleanability

Daily dusting, vacuum cleaning, manual wet cleaning, high-pressure washing and steam cleaning. Water temperature max. 70°C. Can withstand the use of common disinfecting chemicals. Withstand the use of hydrogen peroxide vapour.



## Visual appearance

White 141, nearest NCS colour sample S 1000-N, 73% light reflectance.



## Influence of climate

The tiles withstand a permanent ambient RH up to 95% at 30°C without sagging, warping or delaminating (ISO 4611). A higher temperature/moisture is permissible during washing as stated above. Microbiological growth class 0 according to ASTM G 21-96. Fulfills the requirements B1 and B5 of zone 4 according to NF S90-351. The grid and accessories meet the demands of corrosion class C3 according to EN ISO 12944-2.



## Indoor Climate

Certificate / Label

Europe

EN  
13501-1

Can be used in rooms classified as ISO class 4 according to ISO 14644-1.



## Environmental influence

Partly recyclable.



## Fire safety

Country

Standard

Class

Europe

EN 13501-1

A2-s1,d0

The glass wool core of the tiles is tested and classified as non-combustible according to EN ISO 1182.



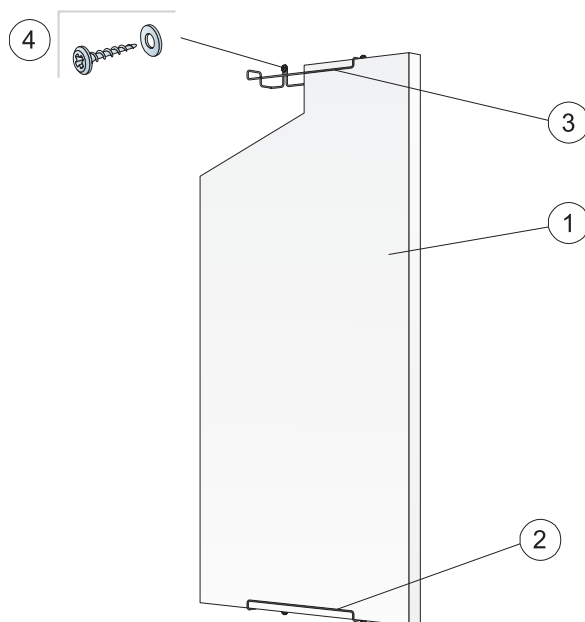
## Mechanical properties

See table about Max live load and Min load bearing capacity and Functional demands, Mechanical properties at [www.ecophon.com](http://www.ecophon.com).



## Installation

Installed according to installation diagrams, installation guides and drawing aid. For information regarding minimum overall depth of system see quantity specification.

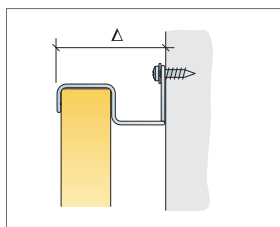


© Ecophon Group

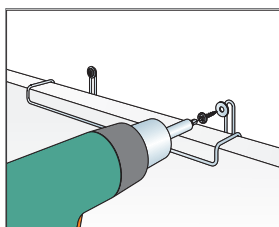
## QUANTITY SPECIFICATION (EXCL. WASTAGE)

Size, mm		
1200x600		
1	Hygiene Advance Wall	1,4/m <sup>2</sup>
2	Connect Wall fixing C3, vertical installation	2/panel
3	Connect Wall fixing C3, horizontal installation	4/panel
4	Wall screw, A2 material (not supplied by Ecophon)	2/wall fixing

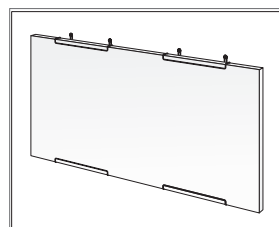
Δ Min. overall depth of system: 90 mm



See Quantity specification



Installation with wall screw in stainless steel (A2) material



Horizontal installation of Advance Wall C3

Size, mm	Max live load [N]	Min load bearing capacity [N]
1200x600	0	-

Live load/load bearing capacity