

340/9.2000  
® WallGard

# GRAFFITI BARRIER

REVERSIBLE GRAFFITI-RESISTANT  
PROTECTIVE BARRIER FOR ALL  
SURFACES



deeply.

WallGard GRAFFITI BARRIER forms a film that does not alter the appearance of the surface.

On some surfaces such as polished marble, ceramic tiles, or materials with low absorbency, the surface treated may become slightly opaque. Therefore testing beforehand is recommended. For best results extend the treatment up to the string-course, the expansion joints or conductors.

WallGard GRAFFITI BARRIER is easily removable using hot water (about



## WHERE TO USE

- Protection of marble, granite and other natural stone facings against spray-painted graffiti.
- Protection of porous and non-porous facings.

### Typical applications

On all surfaces that are potential targets for graffiti, such as:

- all types of natural stone facings;
- brick or concrete block facings;
- concrete facings;

- painted renders resistant to high pressure cleaning;
- painted wood.

## TECHNICAL CHARACTERISTICS

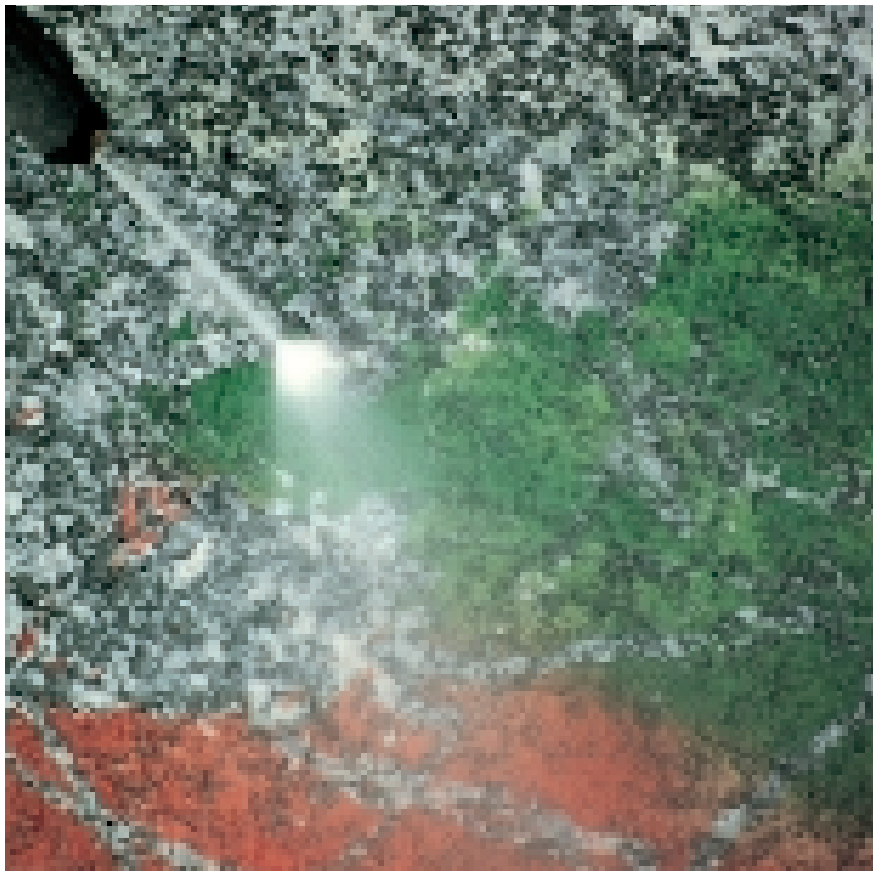
WallGard GRAFFITI BARRIER is a water emulsion of polymer waxes specifically formulated for reversible protection of facings against graffiti.

WallGard GRAFFITI BARRIER fills surface pores without affecting vapour-permeability, creating a repellent barrier against oils and water that prevents graffiti from penetrating

80°C) in a high pressure cleaner.

## RECOMMENDATIONS

- Do not use WallGard GRAFFITI BARRIER to consolidate surfaces.
- Do not dilute WallGard GRAFFITI BARRIER with solvents or water.
- Do not apply WallGard GRAFFITI BARRIER on substrates that are saturated with water or when rain is imminent.
- Do not apply WallGard GRAFFITI BARRIER at temperatures below +8°C and above +35°C.



Using a high-pressure cleaner on granite treated with WallGard GRAFFITI BARRIER

Wait several hours before applying WallGard GRAFFITI BARRIER, which can be applied even when the substrate is slightly damp.

### Preparing the WallGard GRAFFITI BARRIER

WallGard GRAFFITI BARRIER is ready to use and should not be diluted with water or solvents.

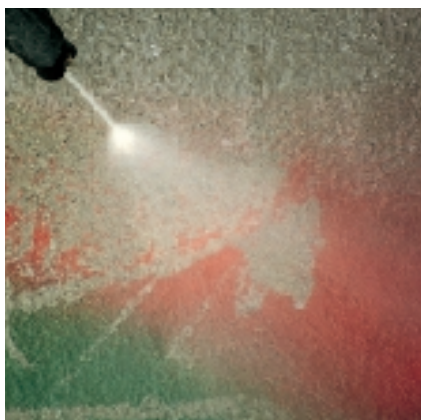
### Application procedure

WallGard GRAFFITI BARRIER can be applied with brush, roller or spray. The latter is preferable for rough or irregular surfaces. For thorough impregnation WallGard GRAFFITI BARRIER should be applied to saturation in a single coat.

On very porous surfaces, apply a second coat, if needed, 20 minutes later at 20°C.

### Graffiti removal

Graffiti can be removed from surfaces treated with WallGard GRAFFITI BARRIER using hot water (about 80°C) in a high pressure cleaner. Traces of graffiti that have penetrated into the



Cleaning concrete treated with WallGard GRAFFITI BARRIER

**N.B.** Graffiti should be removed from surfaces treated with WallGard GRAFFITI BARRIER by using a high pressure cleaner with water at +80°C. We recommend verifying beforehand that the substrate can withstand the physico-mechanical stress.

## HOW TO USE

### Preparing the substrate

The surface to be treated with WallGard GRAFFITI BARRIER must be perfectly clean and solid. Completely remove dirt, dust, grease, oil, and saline efflorescence by sanding, sandblasting or high-pressure cleaning.

## TECHNICAL DATA

**Consistency:** runny liquid

**Colour:** milky white

**Specific gravity:** 0.98 g/cm<sup>3</sup>

**Brookfield viscosity:** 30 cPs

**Dry solid content:** 14%

**Storage:** 12 months in original sealed packaging

**Health hazard classification according to EC L. 88/379:** none

**Inflammability:** no

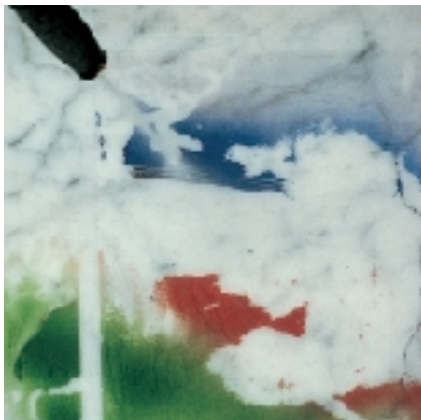
**Customs class:** 3209 10 00

## APPLICATION DATA

**Drying time:** 20 min. at 20°C

**Application temperature range:** +8°C to +35°C

**Coverage:** 30 to 150 g/m<sup>2</sup>



Using a high-pressure cleaner on Carrara marble treated with WallGard GRAFFITI BARRIER

surface may be removed with MAPEI's WallGard GRAFFITI REMOVER GEL, a

special detergent gel. (see Technical Data Sheet).

After removing the graffiti with high-pressure cleaning, renew the protection with a new application of WallGard GRAFFITI BARRIER.

#### **Cleaning**

Brushes, rollers and spray guns can be cleaned with water before the product dries.

#### **COVERAGE**

30 to 150 g/m<sup>2</sup> per coat, depending on the porosity of the substrate.

#### **PACKAGING**

5-kg and 20-kg buckets.

#### **STORAGE**

In a dry place at a temperature between +5°C and +35°C.

#### **WARNING**

*N.B. Although the technical details and recommendations contained in this report correspond to the best of our knowledge and experience, all the above information must, in every case be taken as merely indicative and subject to confirmation after long-term practical applications; for this reason, anyone who intends to use the product must ensure beforehand that it is suitable for the envisaged application. In every case, the user alone is fully responsible for any consequences deriving from the use of the product.*

