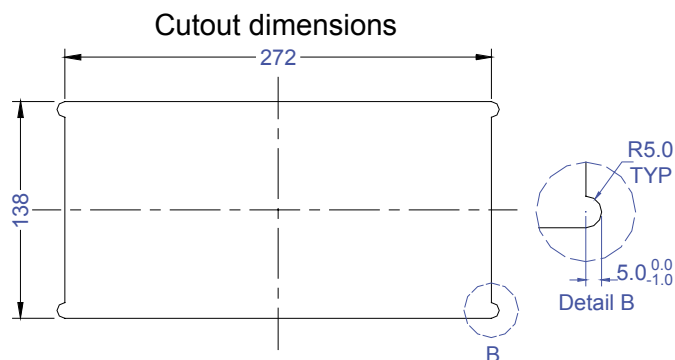
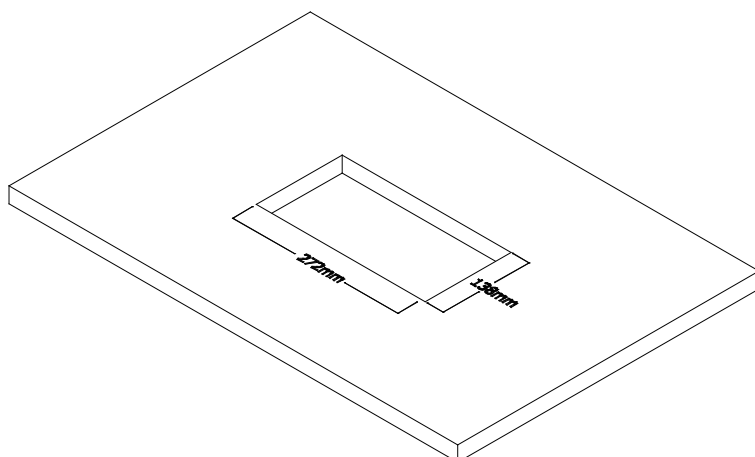
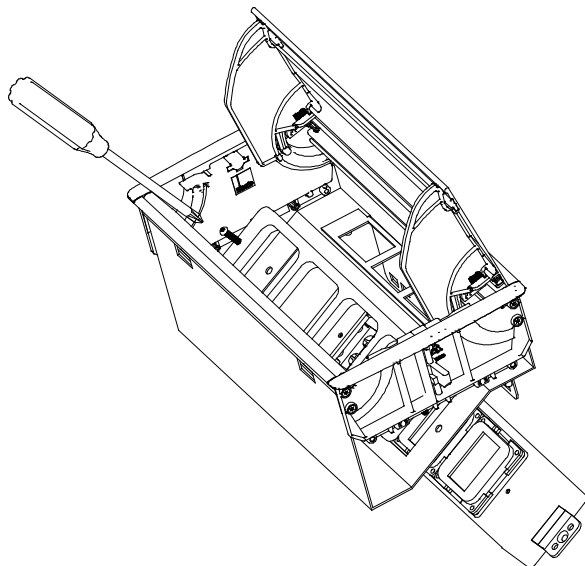


## Axxess with 4 gang PU installation instructions

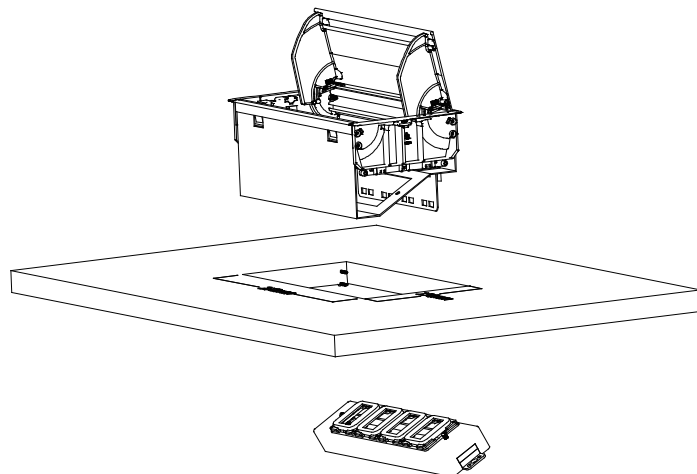
- 1 Machine the correct cutout in the surface for the Axxess unit



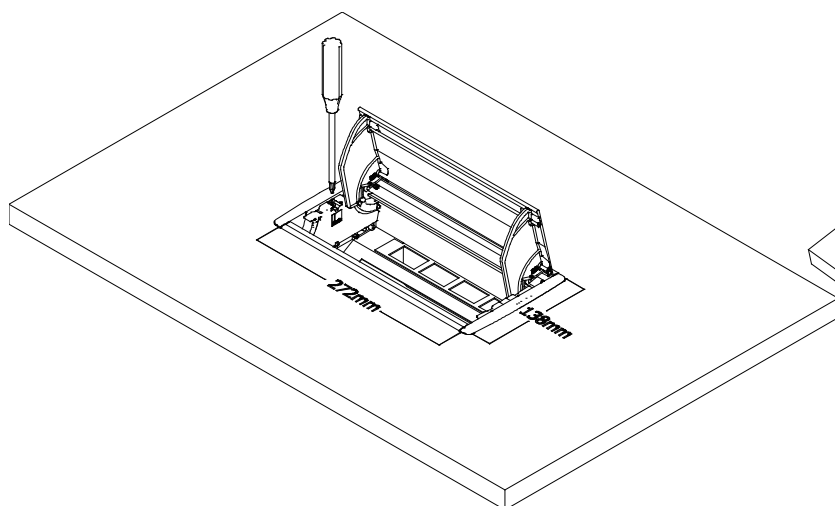
- 2 Before fitting the Axxess detach the plastic Powerunit from the Axxess by unscrewing the Powerunit



- 3 Lower the Axxess into the cutout



- 4 Fit the Axxess unit securely with a screwdriver using the Axxess clamps at each end of the unit



- 5 Re-attach the plastic Powerunit to the Axxess unit

