





Colour Anchor Collection

Combine and contrast Amtico Colour Anchor carpet tiles to create unique commercial spaces.

Blend fields of single colour or define areas with accents. Experiment with vibrant bolds and calming neutrals, this softly textured pattern is understated for small-scale spaces yet active enough for extensive projects.



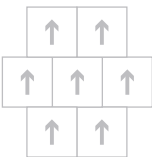
1 Design
15 Colours

Specification

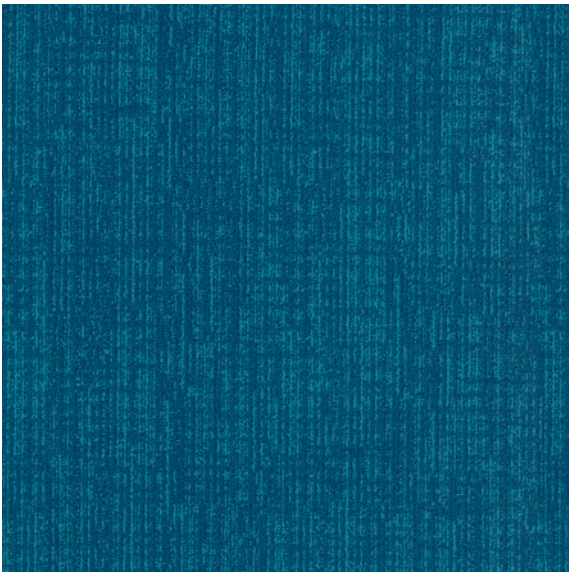
Colour Anchor

Face fibre	Solution dyed Antron Lumena 6,6 nylon
Effective pile mass	426g/m ²
Pile thickness	2.9 mm
Tile Thickness	6.4mm
Total tile weight	4,198 g/m ²
Backing	Non-Woven Polyester/Polyamide
Warranty	10 Years Limited
Size	609.6 x 609.6 mm / 24" x 24"

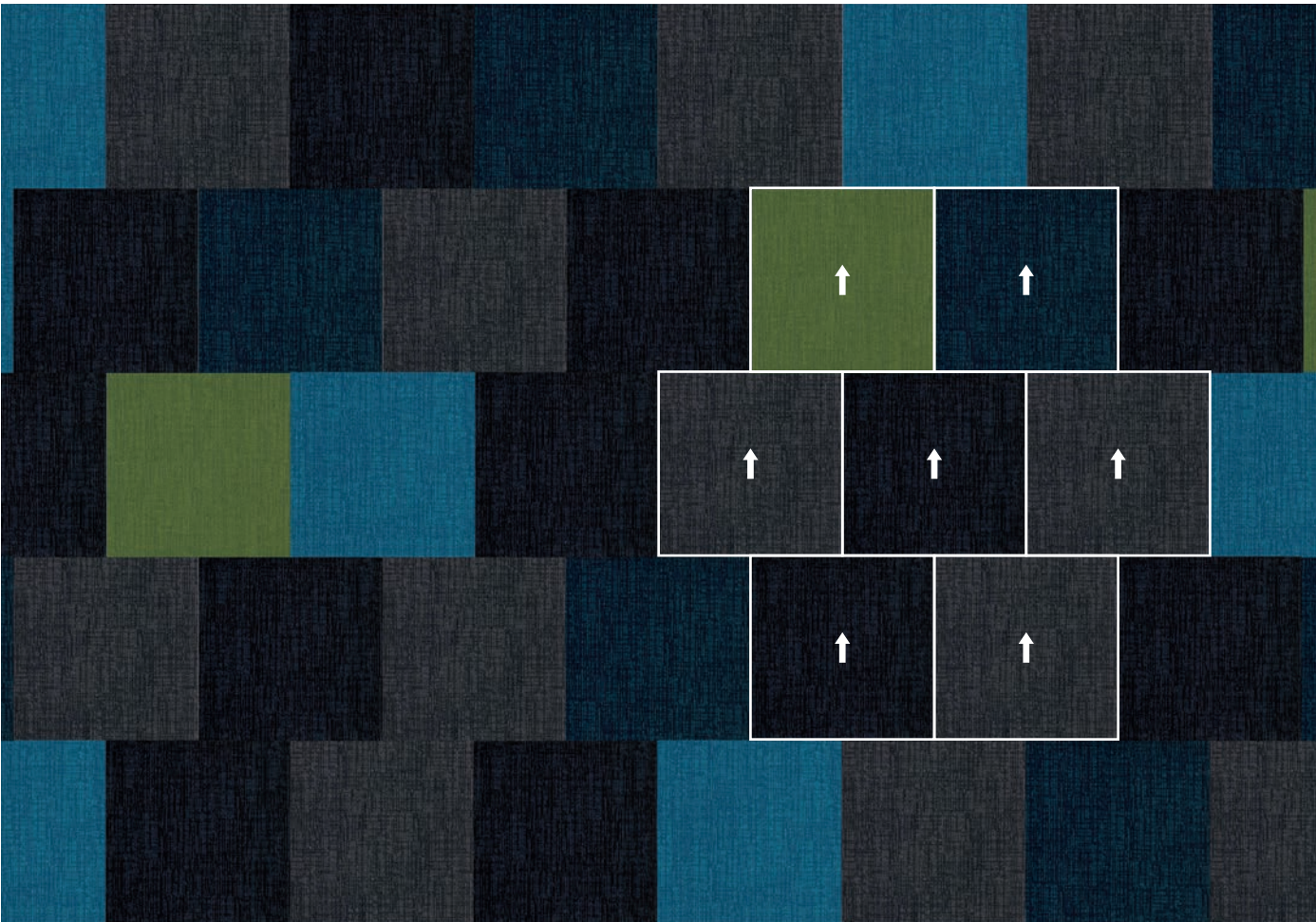
Recommended installation methods



Brick

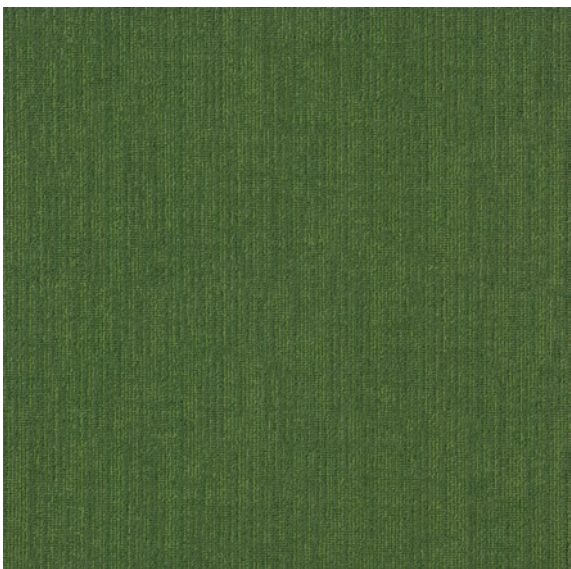


Squawk YCCOANT33647

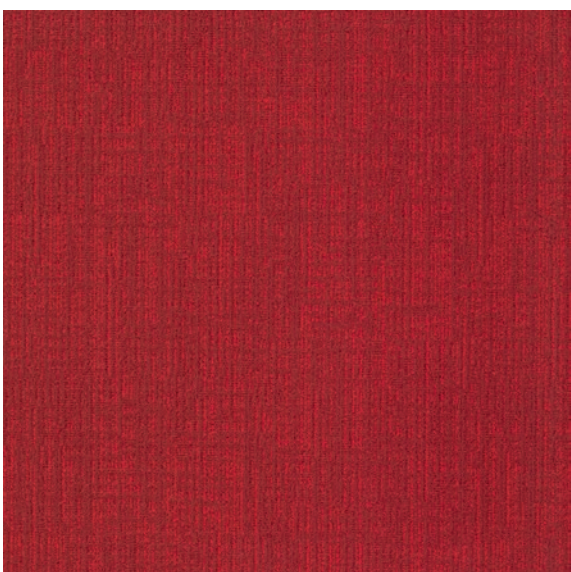




Abuzz YCCOANT52640



Meadow YCCOANT43650



Poppy YCCOANT74643

"Working with colour can be incredibly satisfying - it has the power to transform a space, influence psychology and enhance wellbeing."



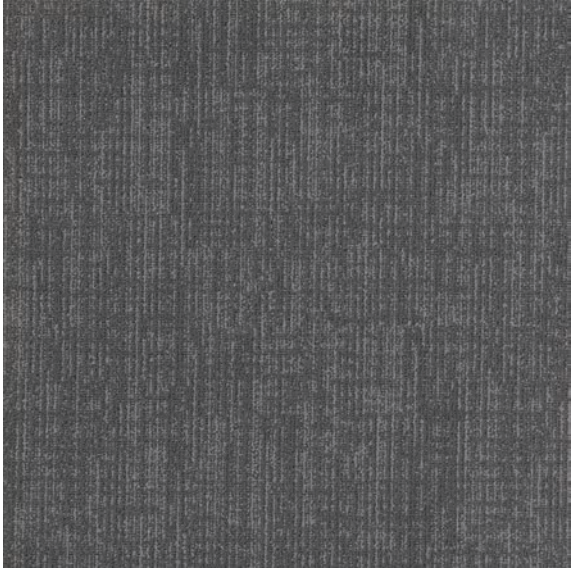
Helen Sawyer
Senior Designer



10YR COMMERCIAL
WARRANTY

Colours

Ditto YCCOANTT2525



Kit YCCOANT33531



Tinker YCCOANTT4527



Barley YCCOANT81520



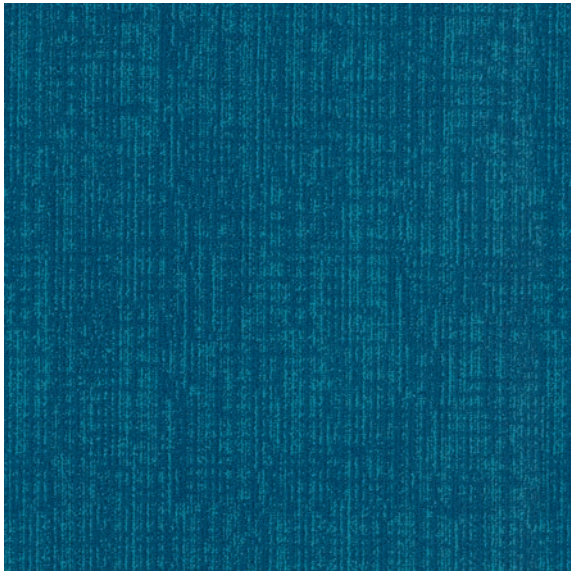
Fizzle YCCOANT82521



Wink YCCOANTT3526



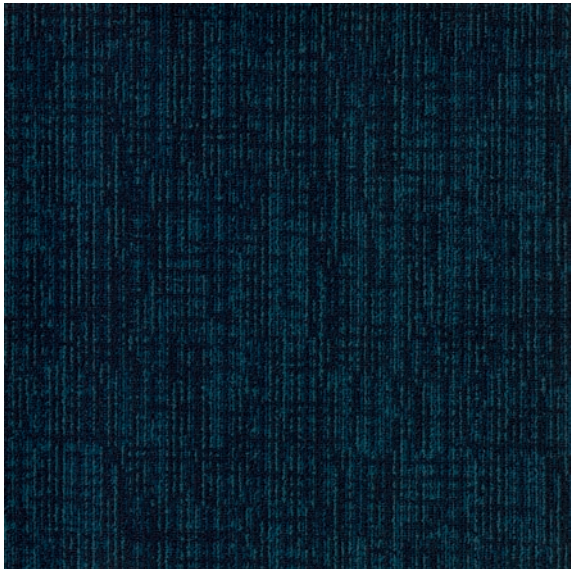
Squawk YCCOANT3647



Island YCCOANT35651



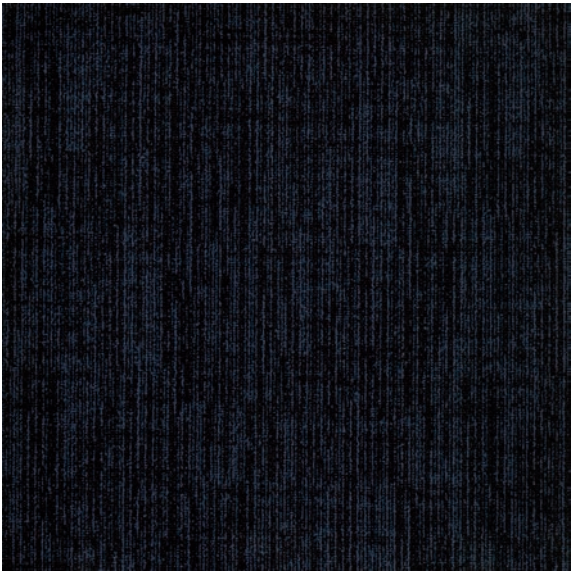
Rumpus YCCOANT35648



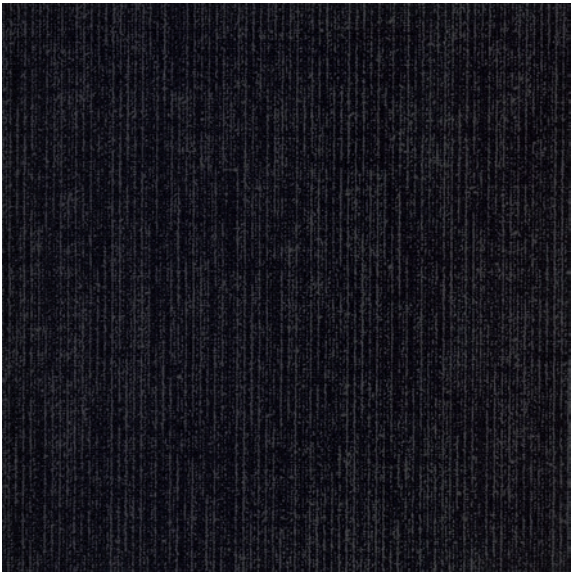
Migrate YCCOANT3652



Twinkle YCCOANT35529



Liquorice YCCOANT5528







Don't match, blend. Don't stick, twist. Mingle. Connect. Unify.

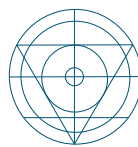
Amtico Carpet offers the exceptional combination of design originality, high-quality durability and performance that sets our flooring products apart.

We have used our extensive design and manufacturing expertise to ensure that our carpet collections work seamlessly alongside our existing LVT. Options include our loose lay Access, Spacia 0.55mm and our premium, design-led Signature collections.

In doing so, we hope to both inspire and enable you with a range of stylish, hard-working and versatile possibilities that we know will work in modern environments.

The sort of exceptional high-performance design solutions you just won't find anywhere else.

Amtico makes it possible.



EXPERT
KNOWLEDGE

The unrivalled knowledge,
expert support and bespoke
service you'd expect from
a market leader with over
100 years' experience.

Technical Specifications



Name, Nom, Nombre	Standard, Norme, Norma	Symbol, Symbole, Simbolo	Result, Résultat, Resultados
CE / DOP, CE / DOP, CE / DOP	EN 14041		CPR/AI/015
Usage Classification, Classification d'usage, Clasificación al uso	EN 1307		23, 33
Luxury Class, Classe de confort, Clase confort	EN 1307		LC2
Size, Dimensions, Dimensiones	EN 994		609.6 x 609.6 mm (24" x 24")
Construction Gauge, Construction jauge, Construcción galga	ISO 2424		Patterned Loop 5/64"
Fibre Composition, Composition du velours, Composición fibra	-		Invista Antron Lumena Nylon 6,6
Dye Method, Méthode de teinte, Método Hue	-		Solution dyed
Primary Backing, Premier dossier, Primer soporte	-		Non-Woven Polyester/Polyamide
Secondary Backing, Second dossier, Segundo soporte	-		PVC
Stitches per 10cm, Nombre de rangs / 10cm, Número de rangos / 10cm	-		37
Total Thickness (mm), Epaisseur totale (mm), Espesor total (mm)	ISO 1765		6.4 mm
Total Mass Per Unit Area (g/m²), Masse surfacique totale (g/m²), Peso total (g/m²)	ISO 8543		4198 g/m²
Effective Pile Thickness (mm), Epaisseur du velours utile (mm), Altura fibra útil (mm)	ISO 1766		2.9 mm
Pile Mass Total/Effective (g/m²), Poids du velours total / utile (g/m²), Peso fibra total / útil (g/m²)	ISO 8543		678/426 g/m²
Surface Pile Density (g/cm³), Densité du velours (g/m³), Densidad de fibra (g/m³)	ISO 8543		0.15 g/cm³
Number of Tufts/Loops (calculated per m²), Nombre de tufts / boucles (calculé par m²), Densidad / Loops (calculado por m²)	ISO 1763		190,230
Fire Resistance, Résistance au feu - euroclasses, Clasificación al fuego - Euroclases	EN 13501-1		B _s s1
Slip Resistance, Résistance au glissement, Resistencia al deslizamiento	EN 13893		Class DS
Dimension Stability, Stabilité dimensionnelle, Estabilidad dimensional	EN 986		≤ 0.2 %
Anti-Static Body Voltage (kV @25%rh), Test du marcheur (kV @25%rh), Prueba de Walker (kV @25%rh)	ISO 6356		≤ 2.0 kV
Vertical Electric Resistance, Résistance électrique verticale, Resistencia eléctrica vertical	ISO 10965		≥ 10 ¹⁰ Ω
Horizontal Electric Resistance, Résistance électrique horizontale, Resistencia eléctrica horizontal	ISO 10965		≥ 10 ¹⁰ Ω
Castor Chair Suitability, Utilisation de chaise à roulettes, Uso de silla con ruedas	EN 985		r ≥ 2.4 / Intensive Use
Light Colour Fastness, Solidité des coloris à la lumière - valeur seuil, Solidez del color a la luz - valor umbral	EN ISO105:B02		≥ 6
Colour Fastness to Rubbing, Solidité des couleurs au Frottement, Solidez de los colores con fricción	EN ISO 105:X12		4.5-5
Colour Fastness to Water, Solidité des couleurs à l'eau, Solidez de los colores al agua	EN ISO 105:E01		5
Resistance to Fraying, Résistance à l'Effilochage, Resistencia a deshilacharse	EN 1814		Pass
Impact Sound Insulation ΔL _w , Efficacité acoustique au bruit de choc ΔL _w , Aislamiento a los ruidos de impactos ΔL _w	EN ISO 717-2		25 dB
Sound Absorption, Absorption acoustique, Absorción acústica	EN ISO 11654 ISO 354		α _w = 0.15 α _s Hz 125 250 500 1,000 2,000 4,000 0.04 0.01 0.07 0.12 0.28 0.39
Thermal Resistance (m²K/W), Résistance thermique, Resistencia térmica (m²K/W)	ISO 8302		0.068 m²K/W
Emissions COV, Emissions COV, Emisiones COV		Information sur le niveau d'émission de substances volatiles dans l'air intérieur, présentant un risque de toxicité par inhalation, sur une échelle de classe allant de A+ (très faibles émissions) à C (fortes émissions).	A+
Emissions, Emissions, Emisiones	M1		Certified / www.m1.rts.fi
Emissions, Emissions, Emisiones	Indoor Air Comfort Gold		Certified. IACG-352-04-09-2018
Environment, Environnement, Ambiente	ISO 14025		Mannington decl. no EPD 10017

Bezeichnung, Namn, Наименование	Prüfnorm, Standard, Стандарт	Symbol, Symbol, Символ	Ergebnis, Resultat, Результат
CE / DOP, CE / DOP, CE / DOP	EN 14041		CPR/AI/015
Beanspruchungsklasse, Bruksklassificering, Класс использования	EN 1307		23, 33
Komfortklasse, Komfortklass, Класс люкс	EN 1307		LC2
Fliesengröße, Storlek, Размер	EN 994		609.6 x 609.6 mm (24" x 24")
Herstellungsverfahren, Konstruktion Gauge, Ширина полотна	ISO 2424		Patterned Loop 5/64"
Material der Polnutschicht, Garntyp, Состав волокон	-		Invista Antron Lumena Nylon 6,6
Färbeforfarande, Infärgningsmetod, Метод окрашивания	-		Solution dyed
Träger-/Grundmaterial, Tuftstomme, Первичная подкладка	-		Non-Woven Polyester/Polyamide
Rückenausstattung, Baksida, Вторичная подкладка	-		PVC
Stiche pro 10 cm, Tufter per 10 cm, Петель на 10 см	-		37
Gesamtdicke, Total tjocklek (mm), Общая толщина (мм)	ISO 1765		6.4 mm
Flächengewicht, Total Vikt (g/m2), Общая масса на единицу площади (г/м2)	ISO 8543		4198 g/m ²
Polschichtdicke, Luggtjocklek (mm), Расчетная толщина ворса (мм)	ISO 1766		2.9 mm
Poleinsatzgewicht - total/effektiv, Luggvikt Total / Effektiv (g/m2), Масса ворса общая/расчетная (г/м2)	ISO 8543		678/426 g/m ²
Pol - Rohdichte, Luggdensitet (g/m3), Плотность поверхности ворса (г/см3)	ISO 8543		0.15 g/cm ³
Anzahl Noppen/Schlingen (berechnet pro m2), Tufttathet (ultraknat per m2), Количество ворсовых пучков / петель (рассчитано на м2)	ISO 1763		190,230
Brandverhalten, Brandklass, Огнестойкость	EN 13501-1		B _{fl} s1
Rutschhemmstufe, Halkmotstånd, Сопротивление скольжению	EN 13893		Class DS
Dimensionsstabilität, Dimensionstabilitet, Стабильность размеров	EN 986		≤ 0.2 %
Elektrostatisches Verhalten (kV @25%rh), Elektrostatisk Personuppladdning, Антистатическое напряжение основы (кВ при 25 % отн. влаж.)	ISO 6356		≤ 2.0 kV
Vertikaler, elektrischer Widerstand, Vertikal Elektrisk Resistans, Вертикальное электрическое сопротивление	ISO 10965		≥ 10 ¹⁰ Ω
Horizontaler, elektrischer Widerstand, Horisontell Elektrisk Resistans, Горизонтальное электрическое сопротивление	ISO 10965		≥ 10 ¹⁰ Ω
Stuhlrollenbeanspruchung, Tålighet for Rullande Stolshjul, Устойчивость к воздействию стула на роликах	EN 985		r ≥ 2.4 / Intensive Use
Lichtechtheit, Färgbeständighet / Ljus, Цветоустойчивость к воздействию света	EN ISO105:B02		≥ 6
Reibechtheit trocken/nass, Färgbeständighet / Mekanisk, Цветоустойчивость к протиранию	EN ISO 105:X12		4.5-5
Wasserechtheit, Färgbeständighet / Vatten, Цветоустойчивость к воздействию воды	EN ISO 105:E01		5
Schnittkantenfestigkeit, Tålighet mot fransning, Устойчивость к осыпанию	EN 1814		Pass
Trittschallverbesserungsmaß ΔLw, Stegljudsförbättring, Звукоизоляция от ударного шума	EN ISO 717-2		25 dB
Schallabsorptionsgrad, Ljudabsorption, Звукопоглощение	EN ISO 11654 ISO 354		α _w = 0.15 α _s 0.04 0.125 0.250 0.500 1.000 2.000 4.000 0.01 0.07 0.12 0.28 0.39
Wärmedurchlasswiderstand, Värmegenomgång, Теплостойкость (м2К/Вт)	ISO 8302		0.068 m ² K/W
Emissions COV, Emissioner COV, Выделение ЛОС			A+
Emissionsverhalten, Emissioner COV, Выделение вредных веществ	M1		Certified / www.m1.rts.fi
Emissionsverhalten, Emissioner, Окружающая среда	Indoor Air Comfort Gold		Certified. IACG-352-04-09-2018
Umwelt, Miljö, Экологичность	ISO 14025		Mannington decl. no EPD 10017

Installation, Cleaning & Maintenance

Our aftercare team provides guidance and expert technical advice.

Full recommendations for careful preparation and installation to ensure your floor performs at its best. Together with the correct maintenance regime, your carpet will last longer and become an even better investment.

Full guidance is available at
amtico.com/commercial/technical
For further details, please contact
technical.support@amtico.com or **+44 (0)2476 861 409**

Packaging Information

	Size	Tiles in Box	M ² per Box	Box Weight	Box Dimensions	Boxes on Pallets	Pallet Weight	Pallet Dimensions
Colour Anchor	609.6 x 609.6 mm / 24" x 24"	14	5.20	29 kg	63 x 62 x 10.5 cm	24	715 kg	130 x 67 x 130 cm



10YR COMMERCIAL
WARRANTY



STOCKED
PRODUCT



STAIN AND FADE
RESISTANCE



antron. 

Warranty

All Amtico Carpet products come with an Amtico Carpet product warranty against wear-out. For full details visit **amtico.com/commercial/warranty**



Unify

Creating harmonious zones and seamless transitions, Amtico Carpet provides a contemporary flooring solution specifically designed to solve problems in modern multifunctional commercial environments.

Amtico Carpet comprises 12 individual collections, 23 designs, and 121 colourways in 2 easy to install modular sizes.

Amtico makes it possible.

Discover more Amtico Carpet at amtico.com/carpet

amtico
makes it
possible

**Amtico UK &
European Sales**

Solar Park Southside
Solihull, West Midlands
B90 4SH

UK Sales
+44 (0) 121 745 0800
samples@amtico.com

South European Sales
+44 (0) 121 745 0862
sales.soe@amtico.com

Amtico Head Office

Kingfield Road
Coventry
CV6 5AA
+44 (0) 24 7686 1400
samples@amtico.com

amtico.com

**Amtico International
Germany**

Im Taubental 11
41468 Neuss
+49 (0) 2131 359 16 0
info@amtico.de

**Amtico International
France**

12 Rue Pernelle
75004 Paris
+33 (0) 1 55 38 95 70
info@amtico.fr

**Amtico International
Scandinavia**

Isafjordsgatan 22
164 40 Kista
+46 (0) 8 584 233 24
info@amtico.se

Amtico International Asia

Unit 1907, 19th Floor
Paul Y. Centre
51 Hung To Road, Kwun Tong
Kowloon, Hong Kong
+852 2327 7703
samples@amtico.com

**Amtico International
Middle East, Africa & India**

8th Floor
Building Number 2
J&G DMCC, Dubai, UAE
+971 (0) 50 192 33 46
samples@amtico.com

**Amtico International
Australia & New Zealand**

PO Box 6603
Rouse Hill
NSW 2155
Australia
+61 (0) 477708418
australia.orders@amtico.com

Visit amtico.com for more information on our product range, inspiring ideas, maintenance and installation advice. Every effort is made to achieve accurate reproduction of products in this brochure, however printing limitations can be misleading. Selection of products should be made from actual samples. Samples are small pieces cut from standard tiles. They give only a general indication of the design. Tone and shading can vary slightly from batch to batch and it is not possible to guarantee that the sample will exactly match the material supplied. The policy of the Company is one of continuous development and improvement and the right is reserved to add or delete from the range or change patterns without prior notification. All metric sizes are rounded. All products are manufactured in line with EN649, EN ISO 10582 and EN1307. Brochure correct at the time of printing.

amtico
makes it
possible

amtico
A MANNINGTON COMPANY