



Admixtures for concrete





ADMIXTURES FOR CONCRETE

A complete range of admixtures for producers of concrete, offering the best solutions to tackle the challenges of both technological innovation and routine production, in full compliance with international standards, while guaranteeing the highest possible standards of quality.

MAPEI admixtures have been produced since 1992 and have deservedly earned the respect of producers and contractors all over the world. This is attributed to their exceptional performance characteristics under all operating conditions and the prompt on-site assistance offered by dedicated technical specialists in any part of the world. And in addition, the continuous evolution of products and technology, developed and manufactured in **MAPEI**'s own Research and Development laboratories.

C E ***MAPEI** admixtures for concrete meet all the essential requirements for the “Directive 89/106/CEE regarding products for construction use”, they have the “CE” seal of approval and are also certified according to specialist European standards.*

ALPHABETICAL INDEX OF PRODUCTS

• Antifreeze	13	• Idrocrete DM	19
• Antifreeze S (Liquid)	13	• Mapeclean Recycler	22
• Antifreeze S (Powder)	13	• Mapeclean Concrete Remover	22
• Chronos VF 131	4	• Mapeclean Defender	22
• Chronos VF 136	4	• Mapecure CA	24
• Chronos VF 202	4	• Mapecure E	24
• Chronos VF 204	4	• Mapecure S	24
• Dynamon Easy 11	9	• Mapecure SRA	17
• Dynamon Easy 21	9	• Mapecure SRA 25	17
• Dynamon Easy 31	9	• Mapecure ST 24	22
• Dynamon Floor 1	8	• Mapecure ST 42	22
• Dynamon Floor 2	8	• Mapecure NS 12	22
• Dynamon HAA	13	• Mapecure NS 18	22
• Dynamon NRG 100	5	• Mapecure IF328	10
• Dynamon NRG 100 M	5	• Mapecure N100	10
• Dynamon NRG 200	5	• Mapecure N200	10
• Dynamon NRG 205	5	• Mapecure PZ500	11
• Dynamon NRG 300	5	• Mapecure PZ504	11
• Dynamon SG 40	5	• Mapecure R104	10
• Dynamon SP1	5	• Mapemix N60	10
• Dynamon SP3	5	• Mapemix R64	10
• Dynamon SP5	5	• Mapecure FV	19
• Dynamon SR1	7	• Mapecure LA (Liquid)	18
• Dynamon SR2	7	• Mapecure LA (Powder)	18
• Dynamon SR3	6	• Mapecure N10	12
• Dynamon SR4	6	• Mapecure PMX	20
• Dynamon SR21	6	• Mapecure PT1	18
• Dynamon SR23	6	• Mapecure PT2	18
• Dynamon SR31	6	• Mapecure R14	12
• Dynamon SR41	6	• Mapecure SF	11
• Dynamon SX	6	• Mapecure UW	21
• Dynamon SX08	6	• Mapetard	15
• Dynamon SX12	7	• Mapetard SD2000	15
• Dynamon SX14	7	• Rescon T	21
• Dynamon SX18	7	• Vibromix C1	14
• Dynamon SX22	7	• Vibromix C2	14
• Dynamon SX24	7	• Vibromix E	14
• Dynamon SX 32	7	• Vibromix L1	14
• Dynamon SX34	7	• Vibromix L2	14
• Dynamon SX T1	6	• Vibromix L3	14
• Dynamon SX T2	6	• Vibromix L4	14
• Expancrete	16	• Vibromix P	14
• Expanfluid	16	• Vibromix S	14
• Form Release Agent DMA 1000	23	• Viscofluid SCC/10	20
• Form Release Agent DMA 2000	23	• Viscostar 3K	20
• Form Release Agent DMA 3000	23		

CE MARKING FOR ADMIXTURES

MAPEI, always involved in quality improvement and compliance with the most advanced norms, already **ISO 9001** and **ISO 14001** certified, has immediately obtained the certificate of conformity to **EN 934-2** and **932-4** Norms. Therefore MAPEI can **CE** mark all its plasticisers and superplasticisers for mortars and concrete.

Since the admixtures for concrete can have extremely different performances and usage, the norm has 12 different classification categories, different tests and minimum performance levels for every single admixture type.

ADMIXTURE	CLASSIFICATION	TABLE
WR	Water reducing / plasticising admixture	Table 2
HRWR	High range water reducing / superplasticising admixture	Table 3
WRA	Water retaining admixture	Table 4
AEA	Air entraining admixture	Table 5
SAA	Set accelerating admixture	Table 6
HAA	Hardening accelerating admixture	Table 7
SRA	Set retarding admixture	Table 8
WRA	Water resisting admixture	Table 9
WR + SRA	Set retarding / water reducing / plasticising admixture	Table 10
HRWR + SRA	Set retarding / high range water reducing / superplasticising admixture	Table 11
WR + SAA	Set accelerating / water reducing / plasticising admixture	Table 12

Admixtures that also have important secondary functions can also obtain the certification for two or more categories at the same time. This way the effects of the admixture on concrete, both during the fresh state and hardened, will be able to be studied.

In order to see if the products meet the requirements, the specific tests for each type of admixture must be carried out:

- *when the certificate is first issued;*
- *when a new formula or type of admixture is developed;*
- *when a modification of the formula could significantly influence the admixture's performances;*
- *when a modification of the raw material could significantly influence the admixture's performances.*

The following table lists the classification of **MAPEI** admixtures for concrete, the abbreviations and the norm table that defines the minimum requirements.



ADMIXTURES FOR CONCRETE EN 934-2 NORM : May 2002

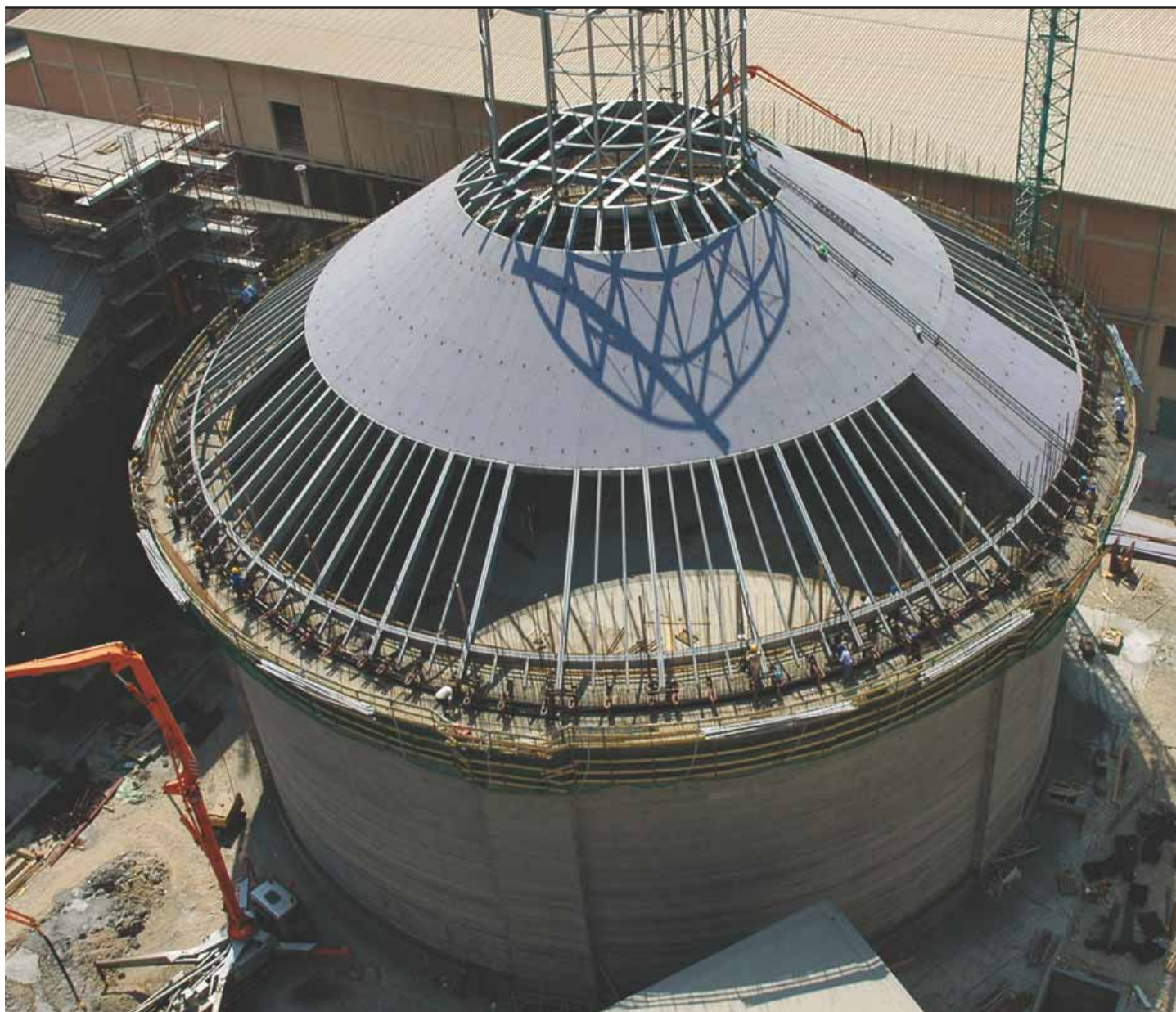
ADMIXTURE	CLASSIFICATION	TABLE
ANTIFREEZE (liquid)	HAA	7
ANTIFREEZE S (liquid)	HAA	7
ANTIFREEZE S (Powder)	HAA	7
CHRONOS VF 131	HRWR + SRA	11
CHRONOS VF 136	HRWR + SRA + HAA	11 + 7
CHRONOS VF 202	HRWR + SRA	11
CHRONOS VF 204	HRWR + SRA	11
DYNAMON EASY 11	HRWR	3
DYNAMON EASY 21	HRWR + SRA	11
DYNAMON EASY 31	HRWR + SRA	11
DYNAMON FLOOR 1	HRWR + SAA	3 + 6
DYNAMON FLOOR 2	HRWR	3
DYNAMON HAA	HAA	7
DYNAMON NRG 100	HRWR + HAA	3 + 7
DYNAMON NRG 100 M	HRWR + HAA	3 + 7
DYNAMON NRG 200	HRWR + HAA	3 + 7
DYNAMON NRG 205	HRWR + HAA	3 + 7
DYNAMON NRG 300	HRWR + HAA	3 + 7
DYNAMON SP1	HRWR + HAA	3 + 7
DYNAMON SP3	HRWR + HAA	3 + 7
DYNAMON SP5	HRWR + HAA	3 + 7
DYNAMON SR1	HRWR	3
DYNAMON SR2	HRWR + SRA	11
DYNAMON SR3	HRWR + SRA	11
DYNAMON SR4	HRWR + SRA	11
DYNAMON SR21	HRWR	3
DYNAMON SR23	HRWR	3
DYNAMON SR31	HRWR + SRA	11
DYNAMON SR31	HRWR + SRA	11
DYNAMON SR41	HRWR + SRA	11
DYNAMON SX	HRWR	3
DYNAMON SX08	HRWR + HAA	3 + 7
DYNAMON SX12	HRWR + SRA + WRA	11 + 4
DYNAMON SX14	HRWR + SRA + WRA	11 + 4
DYNAMON SX18	HRWR + HAA + WRA	3 + 7 + 4
DYNAMON SX22	HRWR + SRA	11
DYNAMON SX24	HRWR	3
DYNAMON SX32	HRWR + SRA	11
DYNAMON SX34	HRWR	3
DYNAMON SX T1	HRWR + SRA	11
DYNAMON SX T2	HRWR + SRA	11
IDROCRETE DM	WRA	9
MAPEFLUID IF328	HRWR + HAA	3 + 7
MAPEFLUID N100	HRWR + SRA	11
MAPEFLUID N200	HRWR	3
MAPEFLUID PZ500	HRWR + WRA	3 + 9
MAPEFLUID PZ504	HRWR + SRA + WRA	11 + 9
MAPEFLUID R104	HRWR + SRA	11
MAPEFLUID R114	HRWR + SRA	11
MAPEMIX N60	WR	2
MAPEMIX R64	HRWR + SRA	11
MAPEPLAST N10	WR	2
MAPEPLAST PT1	AEA	5
MAPEPLAST PT2	AEA	5
MAPEPLAST R14	WR + SRA	10
MAPETARD	SRA	8
MAPETARD D	SRA	8
MAPETARD SD2000	SRA	8
VIBROMIX C1	WR + HAA	2 + 7
VIBROMIX C2	WR + HAA + WRA	2 + 7 + 9
VIBROMIX E	WRA	4
VIBROMIX L1	WR	2
VIBROMIX L2	WR	2
VIBROMIX L3	WR + WRA	2 + 9
VIBROMIX L4	WR	2
VIBROMIX P	WRA	4
VIBROMIX S	WRA	9

ADMIXTURES FOR MORTARS EN 934-4 NORM : May 2002

ADMIXTURE	CLASSIFICATION	TABLE
EXPANFLUID		1

CHRONOS® *(Chemically Reactive Nanostructural Superplasticisers)* SUPER-PLASTICISERS

FOR CONCRETE, WITH EXCELLENT MAINTENANCE OF WORKABILITY



PRODUCT / DESCRIPTION	RECOMMENDED DOSAGE	MAIN APPLICATION	REDUCTION OF WATER	MAINTENANCE OF WORKABILITY	STRENGTH ACCELERATION
CHRONOS VF 131 Vinyl polymer-based super-plasticiser	0.8 -1.6%	ReadyMix Site use	★★★★	★★★★★	★★★
CHRONOS VF 136 Vinyl polymer-based super-plasticiser	0.8 -1.6%	ReadyMix Site use	★★★★	★★★	★★★★★
CHRONOS VF 202 Vinyl polymer-based super-plasticiser	0.6 -1.2%	ReadyMix Site use	★★★★	★★★★	★★★
CHRONOS VF 204 Vinyl polymer-based super-plasticiser	0.6 -1.2%	ReadyMix Site use	★★★★	★★★	★★★★

HIGH-PERFORMANCE SUPER-PLASTICISERS

FOR CONCRETE, WITH RAPID DEVELOPMENT OF MECHANICAL STRENGTH



PRODUCT / DESCRIPTION	RECOMMENDED DOSAGE	MAIN APPLICATION	REDUCTION OF WATER	MAINTENANCE OF WORKABILITY	STRENGTH ACCELERATION
DYNAMON NRG 100 Acrylic-based super-plasticising accelerator	0.5 - 1.5%	Precast	★★★★★	★	★★★★★
DYNAMON NRG 100 M Acrylic-based super-plasticising accelerator	0.5 - 1.5%	Precast	★★★	★	★★★★
DYNAMON NRG 200 Acrylic-based super-plasticising accelerator	0.5 - 1.5%	Precast	★★★★	★★	★★★★
DYNAMON NRG 205 Acrylic-based super-plasticising accelerator	0.5 - 1.5%	Precast	★★★★	★★★	★★★
DYNAMON NRG 300 Acrylic-based super-plasticising accelerator	0.5 - 1.5%	Precast	★★★★★	★★★	★★★
DYNAMON SP1 Acrylic-based super-plasticising accelerator	0.6 - 1.2%	Precast Site use	★★★★	★★★★★	★★★
DYNAMON SP3 Acrylic-based super-plasticising accelerator	0.6 - 1.2%	Precast	★★★★★	★★★	★★★
DYNAMON SP5 Acrylic-based super-plasticising accelerator	0.6 - 1.2%	Precast	★★★★★	★★★	★★★
DYNAMON SG40 Acrylic-based super-plasticising accelerator	0.6 - 1.2%	Precast Site use	★★★★	★★★★★	★★★

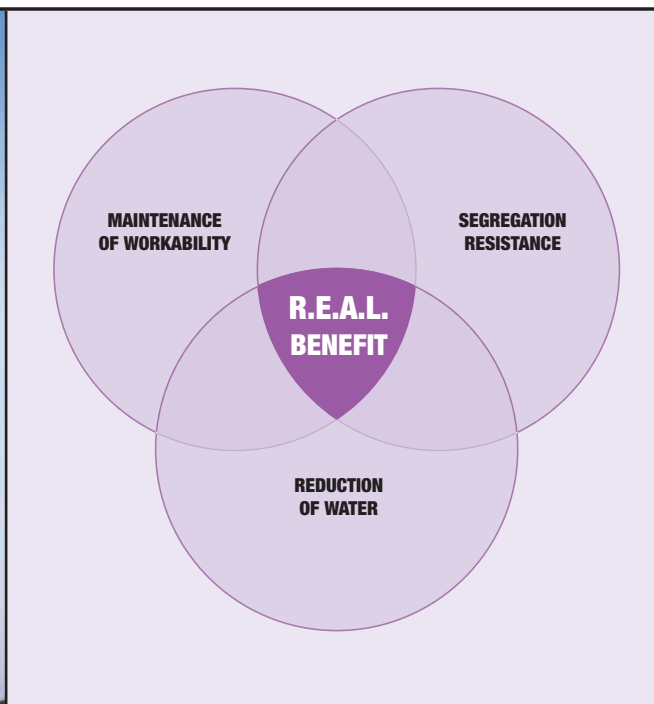
HIGH-PERFORMANCE SUPER-PLASTICISERS

FOR CONCRETE, WITH EXCELLENT MAINTENANCE OF WORKABILITY



PRODUCT / DESCRIPTION	RECOMMENDED DOSAGE	MAIN APPLICATION	REDUCTION OF WATER	MAINTENANCE OF WORKABILITY	STRENGTH ACCELERATION
DYNAMON SR3 Acrylic-based super-plasticiser	0.5 -1%	ReadyMix Site use	★★★★	★★★★	★★
DYNAMON SR4 Acrylic-based super-plasticising retardant	0.8 -1.5%	ReadyMix Site use	★★★	★★★★★	★
DYNAMON SR21 Acrylic-based super-plasticiser	0.7 -1.5%	ReadyMix Site use	★★★★	★★	★★★
DYNAMON SR23 Acrylic-based super-plasticiser	0.7 -1.5%	ReadyMix Site use	★★★	★★	★★★★
DYNAMON SR31 Acrylic-based super-plasticiser	0.7 -1.7%	ReadyMix Site use	★★★★	★★★	★★★
DYNAMON SR41 Acrylic-based super-plasticising retardant	0.7 -1.5%	ReadyMix Site use	★★★★	★★★★★	★★
DYNAMON SX Acrylic-based super-plasticiser	0.5 -2.0%	ReadyMix Site use	★★★★★	★★★	★★★
DYNAMON SX08 Acrylic-based super-plasticising accelerator	0.5 -2.0%	ReadyMix Site use	★★★	★★	★★★
DYNAMON SX T1 Acrylic-based super-plasticising retardant	0.7 -1.5%	ReadyMix Site use	★★★★	★★★★	★★
DYNAMON SX T2 Acrylic-based super-plasticising retardant	0.7 -1.5%	ReadyMix Site use	★★★★	★★★★	★★

FOR PUMPED CONCRETE WITH NO SEGREGATION OR BLEEDING



PRODUCT / DESCRIPTION	RECOMMENDED DOSAGE	MAIN APPLICATION	REDUCTION OF WATER	MAINTENANCE OF WORKABILITY	STRENGTH ACCELERATION
DYNAMON SR1 Acrylic-based super-plasticiser	0.8 -1.5%	ReadyMix Site use	★★★★	★★★	★★
DYNAMON SR2 Acrylic-based super-plasticising retardant	0.8 -1.5%	ReadyMix Site use	★★★	★★★★	★
DYNAMON SX12 Acrylic-based super-plasticising retardant	0.5 -1.5%	ReadyMix Site use	★★★★	★★★★	★★
DYNAMON SX14 Acrylic-based super-plasticiser	0.5 -1.5%	ReadyMix Site use	★★★★	★★★	★★★
DYNAMON SX18 Acrylic-based super-plasticiser	0.8 -2.0%	ReadyMix Site use	★★★	★★	★★★★
DYNAMON SX22 Acrylic-based super-plasticising retardant	0.5 -1.5%	ReadyMix Site use	★★★★	★★★★	★★
DYNAMON SX24 Acrylic-based super-plasticiser	0.5 -1.5%	ReadyMix Site use	★★★★	★★★	★★★
DYNAMON SX32 Acrylic-based super-plasticising retardant	0.5 -1.5%	ReadyMix Site use	★★★★	★★★★	★★
DYNAMON SX34 Acrylic-based super-plasticiser	0.5 -1.5%	ReadyMix Site use	★★★★	★★★	★★★

MULTI-PURPOSE SUPER-PLASTICISERS FOR FLOORS

FOR CONCRETE WITH GOOD WORKABILITY AND CONTROLLED TIMES FOR FLOAT FINISHING



PRODUCT / DESCRIPTION	RECOMMENDED DOSAGE	MAIN APPLICATION	REDUCTION OF WATER	MAINTENANCE OF WORKABILITY	FINISHING ACCELERATION
DYNAMON FLOOR 1 Acrylic-based super-plasticising setting accelerator	0.8 -2.0%	ReadyMix Site use	★★★	★★	★★★★
DYNAMON FLOOR 2 Acrylic-based super-plasticiser	0.8 -2.0%	ReadyMix Site use	★★★	★★★★	★★★

MULTI-PURPOSE SUPER-PLASTICISERS

FOR CONCRETE WITH GOOD WORKABILITY



PRODUCT / DESCRIPTION	RECOMMENDED DOSAGE	MAIN APPLICATION	REDUCTION OF WATER	MAINTENANCE OF WORKABILITY	STRENGTH ACCELERATION
DYNAMON EASY 11 Modified acrylic-based super-plasticiser	0.5 -2.0%	ReadyMix	★★★	★★	★★★
DYNAMON EASY 21 Modified acrylic-based super-plasticising retardant	0.5 -2.0%	ReadyMix	★★★	★★★	★★
DYNAMON EASY 31 Modified acrylic-based super-plasticising retardant	0.5 -2.0%	ReadyMix	★★★	★★★★	★

CONVENTIONAL MULTI-PURPOSE SUPER-PLASTICISERS

FOR CONCRETE WITH GOOD WORKABILITY



PRODUCT / DESCRIPTION	RECOMMENDED DOSAGE	MAIN APPLICATION	REDUCTION OF WATER	MAINTENANCE OF WORKABILITY	STRENGTH ACCELERATION
MAPEFLUID IF328 Naphthalene-based super-plasticising accelerator	0.8 -2.1%	ReadyMix Precast	★★★	★★	★★★★
MAPEFLUID N200 Naphthalene-based super-plasticiser	0.5 -1.5%	ReadyMix	★★★	★★	★★★
MAPEFLUID N100 Naphthalene-based super-plasticiser	0.5 -1.5%	ReadyMix	★★★	★★★	★★
MAPEFLUID R104 Naphthalene-based super-plasticising retardant	0.5 -1.5%	ReadyMix	★★★	★★★★	★
MAPEMIX N60 Multi-dosage super-plasticiser	0.3 -1.2%	ReadyMix	★★	★★	★★
MAPEMIX R64 Multi-dosage super-plasticising retardant	0.3 -1.2%	ReadyMix	★★	★★★	★

SUPERPLASTICISERS WITH POZZOLANIC EFFECT

FOR HIGH-STRENGTH, WATERPROOF CONCRETE AND HIGH CHEMICAL RESISTANCE



PRODUCT / DESCRIPTION	RECOMMENDED DOSAGE	MAIN APPLICATION	REDUCTION OF WATER	MAINTENANCE OF WORKABILITY	STRENGTH ACCELERATION
MAPEFLUID PZ500 Super-plasticiser in powder with silica fume	20 - 60 kg/mc	ReadyMix Site use	★★★★★	★★	★★★
MAPEFLUID PZ504 Super-plasticising retardant in powder with silica fume	20 - 60 kg/mc	ReadyMix Site use	★★★★★	★★★★★	★★



POZZOLANIC ACTION ADMIXTURE

FOR HIGH-STRENGTH, WATERPROOF CONCRETE AND HIGH CHEMICAL RESISTANCE

PRODUCT / DESCRIPTION	RECOMMENDED DOSAGE	MAIN APPLICATION	REDUCTION OF WATER	MAINTENANCE OF WORKABILITY	STRENGTH ACCELERATION
MAPELAST SF Silica fume	5 - 10%	ReadyMix/Site use Precast	★	★★★★★	★

CONVENTIONAL MULTI-PURPOSE PLASTICISERS

FOR CONCRETE WITH GOOD WORKABILITY AND LOW HYDRATION HEAT



PRODUCT / DESCRIPTION	RECOMMENDED DOSAGE	MAIN APPLICATION	REDUCTION OF WATER	MAINTENANCE OF WORKABILITY	STRENGTH ACCELERATION
MAPEPLAST N10 Plasticiser	0.2 - 0.5%	ReadyMix Site use	★★	★★★	★
MAPEPLAST R14 Plasticising retardant	0.2 - 0.5%	ReadyMix Site use	★★	★★★★	★

SETTING AND HARDENING ACCELERATORS

FOR QUICK STRIPPING OF CONCRETE



PRODUCT / DESCRIPTION	RECOMMENDED DOSAGE	MAIN APPLICATION	REDUCTION OF WATER	MAINTENANCE OF WORKABILITY	STRENGTH ACCELERATION
DYNAMON HAA Chloride-free hardening accelerator	1.0 - 3.0%	Precast Site use	★	★	★★★★
ANTIFREEZE S (liquid) Chloride-free hardening accelerator	0.75 -1.5%	ReadyMix Site use	★	★	★★★
ANTIFREEZE S (powder) Chloride-free hardening accelerator	1.0 -2.0%	ReadyMix Site use	★	★	★★★
ANTIFREEZE Setting accelerator with chlorides	1.0 -3.0%	ReadyMix Site use	★	★	★★★★

PLASTICISERS FOR VIBRO-COMPRESSION AND EXTRUSION

FOR EASY COMPACTING, LOW ABSORPTION “DAMP EARTH” CONSISTENCY CONCRETE



PRODUCT / DESCRIPTION	RECOMMENDED DOSAGE	MAIN APPLICATION	PLASTICISING EFFECT	ABSORPTION REDUCTION	STRENGTH ACCELERATION
VIBROMIX L1 Plasticiser	0.2 - 0.8%	Lightweight precast	★★★	★★	★
VIBROMIX L2 Plasticising accelerator	0.2 - 0.8%	Lightweight precast	★★★	★★	★★★
VIBROMIX L3 Water-repellent plasticiser	0.2 - 0.8%	Lightweight precast	★★★	★★★★	★
VIBROMIX L4 Air-entraining plasticiser	0.2 - 0.8%	Lightweight precast	★★★★	★★	★
VIBROMIX C1 High-quality plasticiser and accelerator	0.2 - 0.8%	Lightweight precast	★★★★	★★★	★★★★
VIBROMIX C2 High-quality water-repellent plasticising accelerator	0.2 - 0.8%	Lightweight precast	★★★★	★★★★	★★★★
VIBROMIX E High-efficiency plasticiser	0.3 - 1.0%	Lightweight precast	★★★★★	★★	★
VIBROMIX P High-efficiency plasticiser for extrusion	0.2 - 0.8%	Lightweight precast	★★★★★	★★★★	★
VIBROMIX S High-efficiency waterproof plasticiser	0.2 - 1.2%	Lightweight precast	★★	★★★★★	★

SETTING AND HARDENING RETARDANTS

FOR CONCRETE WITH CONTROLLED SETTING TIMES AND LOW HYDRATION HEAT



PRODUCT / DESCRIPTION	RECOMMENDED DOSAGE	MAIN APPLICATION	REDUCTION OF WATER	MAINTENANCE OF WORKABILITY	STRENGTH ACCELERATION
MAPETARD Retardant with slight plasticising effect	0.2 - 0.5%	ReadyMix Site use	★★	★★★★	★
MAPETARD SD2000 High-efficiency retardant	0.1 -2.0%	ReadyMix Site use	★	★★★★★	★

EXPANSIVE ADMIXTURES

FOR CONTROLLED-SHRINKAGE, DIMENSIONALLY-STABLE CONCRETE



PRODUCT / DESCRIPTION	RECOMMENDED DOSAGE	MAIN APPLICATION	REDUCTION OF WATER	MAINTENANCE OF WORKABILITY	STRENGTH ACCELERATION
EXPANCRETE Expansive agent for concrete	5 - 8%	ReadyMix Site use	★	★	★★
EXPANFLUID Expansive agent for injected slurry	3 - 6%	Site use	★★★★	★★★★	★★

SHRINKAGE REDUCING ADMIXTURES (SRA)

FOR CONTROLLED-SHRINKAGE, DIMENSIONALLY-STABLE CONCRETE



PRODUCT / DESCRIPTION	RECOMMENDED DOSAGE	MAIN APPLICATION	REDUCTION OF WATER	MAINTENANCE OF WORKABILITY	STRENGTH ACCELERATION
MAPECURE SRA Admixture to reduce hydraulic shrinkage	1 - 2%	ReadyMix Site use	★★	★	★★★★★
MAPECURE SRA 25 Admixture to reduce hydraulic shrinkage	1 - 2%	ReadyMix	★★	★	★★★★★

AIR-ENTRAINING AND FOAMING AGENTS

FOR CONCRETE RESISTANT TO FREEZING AND LIGHTWEIGHT CONCRETE



PRODUCT / DESCRIPTION	RECOMMENDED DOSAGE	MAIN APPLICATION	REDUCTION OF WATER	MAINTENANCE OF WORKABILITY	STRENGTH ACCELERATION
MAPELAST PT1 Air-entraining agent for concrete and mortar	0.03 - 0.3%	ReadyMix Site use	★★	★	★
MAPELAST PT2 Air-entraining agent for concrete and mortar	0.02 - 0.3%	ReadyMix Site use	★★	★	★
MAPELAST LA (liquid) Foaming agent and pumping aid	0.8 - 1.2 l/mc	ReadyMix Site use	★★	★	★
MAPELAST LA Powder Foaming agent and pumping aid	0.5 kg/mc	ReadyMix Site use	★★	★	★

WATER-REPELLING AGENTS

FOR CONCRETE WITH LOW WATER ABSORPTION AND NO EFFLORESCENCE



PRODUCT / DESCRIPTION	RECOMMENDED DOSAGE	MAIN APPLICATION	REDUCTION OF WATER	ABSORPTION REDUCTION	STRENGTH ACCELERATION
IDROCRETE DM Water-repelling agent for concrete and mortar	0.2 - 1%	ReadyMix/Site use	★	★★★★★	★

ADMIXTURES TO IMPROVE NATURAL FINISHES

FOR CONCRETE WITH HIGHLY ATTRACTIVE FINISHES



PRODUCT / DESCRIPTION	RECOMMENDED DOSAGE	MAIN APPLICATION	REDUCTION OF WATER	MAINTENANCE OF WORKABILITY	STRENGTH ACCELERATION
MAPEPLAST FV Admixture to eliminate surface blisters	0.3 - 0.7%	ReadyMix/Site use Precast	★	★	★

VISCOSITY MODIFYING ADMIXTURES

FOR SELF-COMPACTING CONCRETE (SCC) AND TO MAKE CONCRETE EASIER TO PUMP



PRODUCT / DESCRIPTION	RECOMMENDED DOSAGE	MAIN APPLICATION	REDUCTION OF WATER	MAINTENANCE OF WORKABILITY	STRENGTH ACCELERATION
MAPEPLAST PMX Pumping aid	0.2 - 0.5%	ReadyMix/Site use Precast	★	★	★
VISCOFLUID SCC/10 Viscosity modifying admixture for SCC	1.0 - 2.0%	ReadyMix/Site use Precast	★	★	★
VISCOSTAR 3K Viscosity modifying admixture for SCC with no fillers	0.3 - 2.5 l/mc	ReadyMix/Site use Precast	★	★	★

ADMIXTURES FOR UNDERWATER CASTING

FOR CONCRETE CAST UNDERWATER WITH NO LEACHING



PRODUCT / DESCRIPTION	RECOMMENDED DOSAGE	MAIN APPLICATION	REDUCTION OF WATER	LEACHING REDUCTION	STRENGTH ACCELERATION
MAPELAST UW Anti-leaching admixture	5 - 10 kg/mc	ReadyMix Site use	★	★★★★★	★
RESCON T Anti-leaching admixture with plasticising effect	10 - 25 kg/mc	ReadyMix Site use	★★★★	★★★★★	★

STRUCTURAL AND ANTI-SHRINKAGE FIBRES

FOR HIGHLY-TOUGH, LOW-SHRINKAGE CONCRETE



PRODUCT / DESCRIPTION	RECOMMENDED DOSAGE	MAIN APPLICATION	REDUCTION OF WATER	MAINTENANCE OF WORKABILITY	CRACKS REDUCTION
MAPEFIBRE ST 24 Structural polymeric fibres	1 - 7 kg/mc	ReadyMix/Site use Precast	★	★	★★★★
MAPEFIBRE ST 42 Structural polymeric fibres	1 - 7 kg/mc	ReadyMix/Site use Precast	★	★	★★★★
MAPEFIBRE NS 12 Anti-shrinkage polymeric fibres	0.4 - 0.8 kg/mc	ReadyMix/Site use Precast	★	★	★★★★
MAPEFIBRE NS 18 Anti-shrinkage polymeric fibres	0.4 - 0.8 kg/mc	ReadyMix/Site use Precast	★	★	★★★★

PRODUCTS FOR RECYCLING AND REPAIR OPERATIONS

FOR RECYCLING WATER USED FOR WASHING AND CLEANING CEMENT MIXERS AND CEMENT TRUCKS

PRODUCT / DESCRIPTION	RECOMMENDED DOSAGE	MAIN APPLICATION	REDUCTION OF WATER	MAINTENANCE OF WORKABILITY	STRENGTH ACCELERATION
MAPECLEAN RECYCLER Admixture for recycling water used for cleaning	0.1 kg/100 l	ReadyMix/Site use Precast			
MAPECLEAN CONCRETE REMOVER Product to remove deposits	50 - 100 g/mq	ReadyMix/Site use Precast			
MAPECLEAN DEFENDER Product to avoid the formation of deposits	20 - 50 g/mq	ReadyMix/Site use Precast			

DEMOULDING AGENTS

FOR CORRECT STRIPPING OF FORMWORK AND AN EXCELLENT NATURAL FINISH



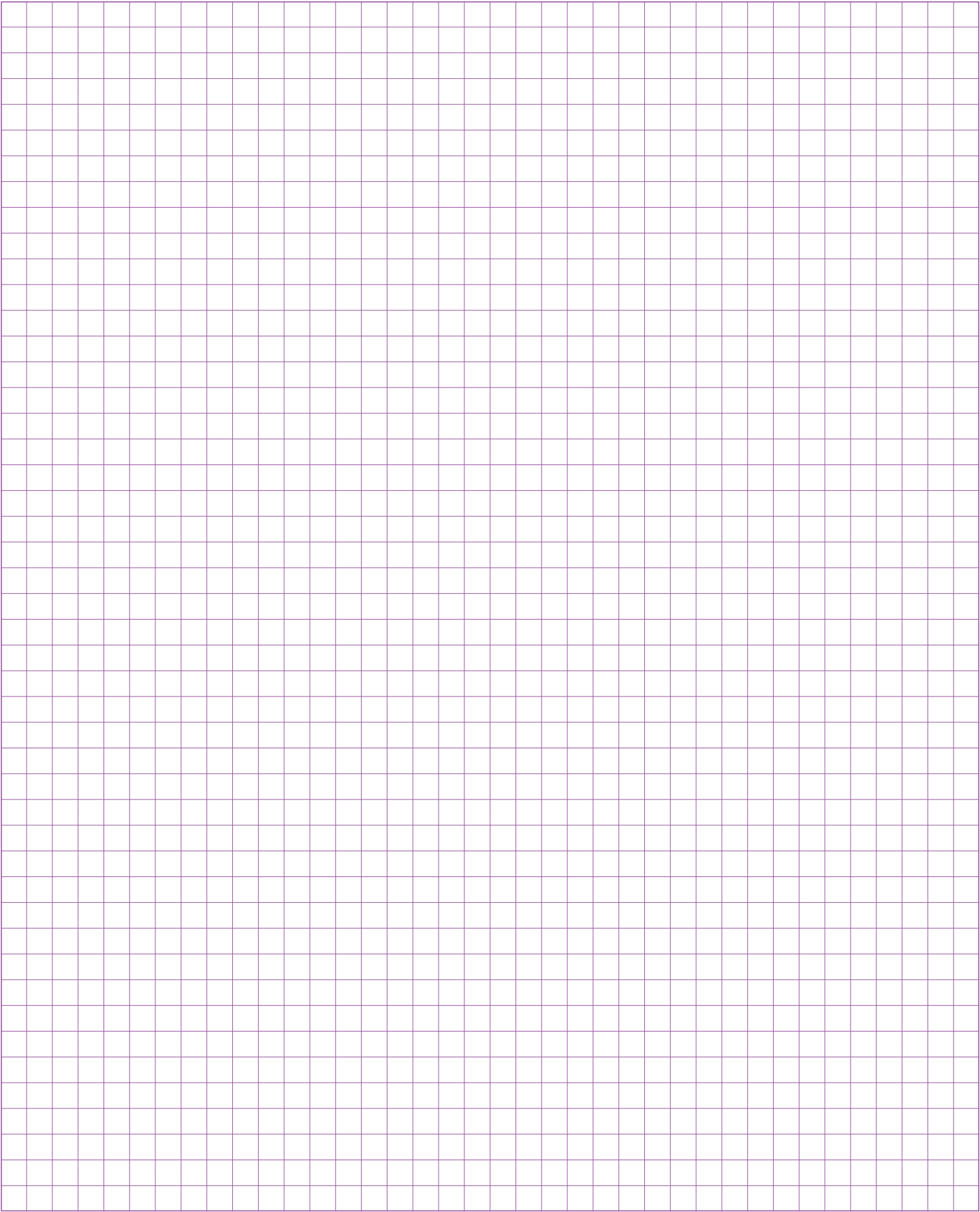
PRODUCT / DESCRIPTION	RECOMMENDED DOSAGE	MAIN APPLICATION	REDUCTION OF WATER	MAINTENANCE OF WORKABILITY	STRENGTH ACCELERATION
DMA 1000 Emulsifying stripping product for wood	10 - 30 g/mq	Precast Site use			
DMA 2000 Multi-purpose, ready-to-use stripping product	20 - 40 g/mq	Precast Site use			
DMA 3000 Vegetable oil-based, multi-purpose stripping product	15 - 25 g/mq	Precast Site use			

SURFACE CURING COMPOUNDS

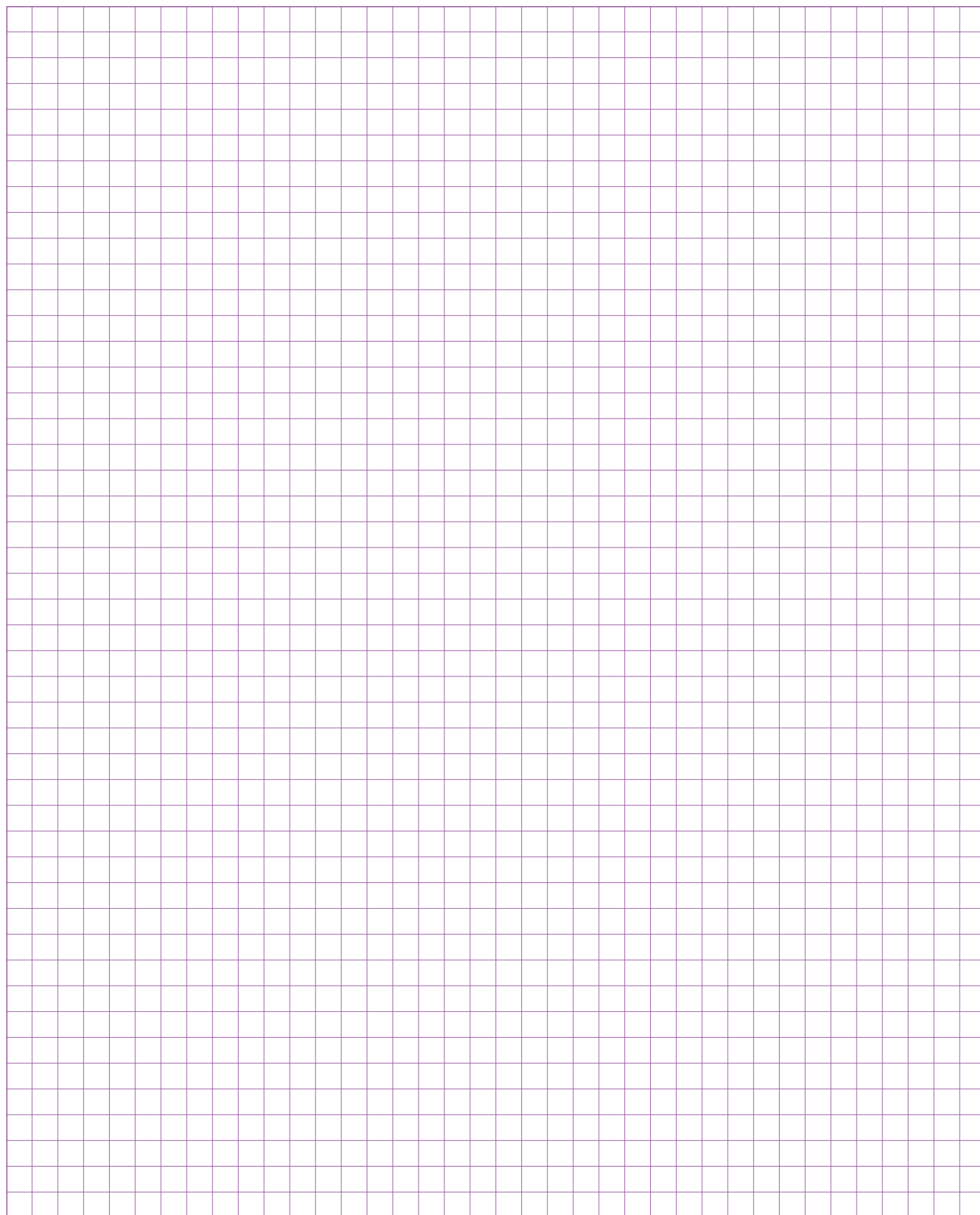
TO PROTECT SURFACES AGAINST THE EVAPORATION OF WATER

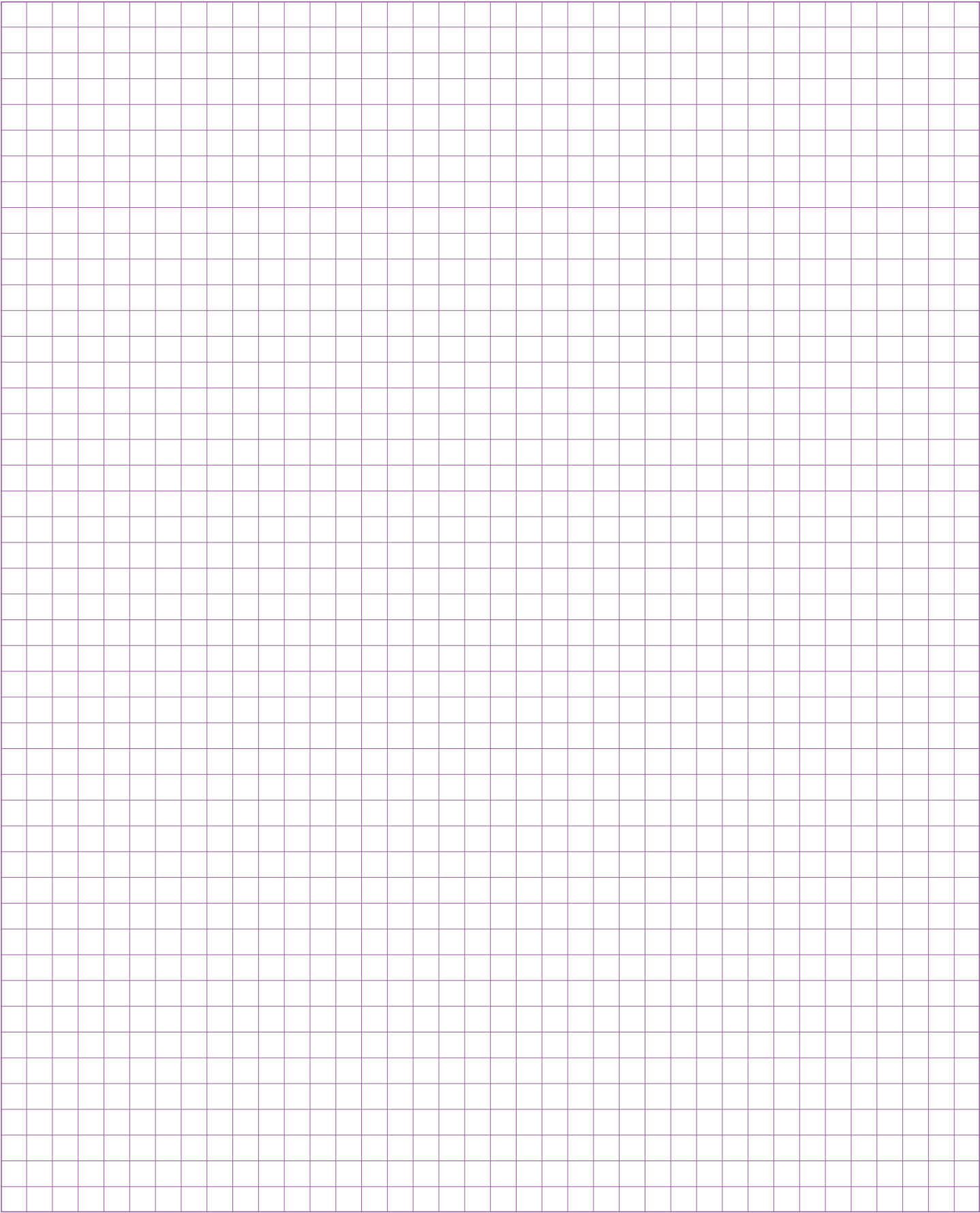


PRODUCT / DESCRIPTION	RECOMMENDED DOSAGE	MAIN APPLICATION	REDUCTION OF WATER	MAINTENANCE OF WORKABILITY	STRENGTH ACCELERATION
MAPECURE E Surface-film curing compound in watery emulsion	70 - 100 g/mq	Precast Site use			
MAPECURE S Solvent surface-film curing compound	100 - 110 g/mq	Precast Site use			
MAPECURE CA Surface-film curing compound, may be painted over	110 - 150 g/mq	Precast Site use			



NOTES





Mapei Group



Italy

HEAD OFFICE

MAPEI SpA

Via Cafiero, 22 - 20158 Milan
Tel. +39-02-37673.1
Fax +39-02-37673.214
Internet: <http://www.mapei.com>
E-mail: mapei@mapei.it

Plants

• Strada Provinciale 159
20060 Robbiano di Mediglia (Milan)
Tel. +39-02-906911
Fax +39-02-90660575

• Via Mediana S.S. 148 km 81.3
04100 Latina
Tel. +39-0773-2548
Fax +39-0773-250391

Distribution centre SASSUOLO

Via Valle D'Aosta, 46
41049 Sassuolo (Modena)
Tel. +39-0536-803116
Fax +39-0536-805255

Office in Rome

Viale Libano, 28
00144 Rome
Tel. +39-06-5929211
Fax +39-06-59290337

Office in Lecce

Via Orsini del Balzo, 24
73100 Lecce
Tel. +39-0832-246551
Fax +39-0832-248472
E-mail: ufficio.lecce@mapei.it



Europe



AUSTRIA - Mapei GmbH

Fräuleinmühle 2
A - 3134 Nußdorf ob der Traisen
Tel. +43-2783-8891 - Fax +43-2783-8893
Internet: <http://www.mapei.at>
E-mail: office@mapei.at
Plant in Traismauer
Distribution centres in Wien,
Hall in Tirol and Graz



BENELUX- Mapei Benelux SA/NV

Zoning Industriel - Rue de l'Avenir, 40
B - 4460 Grâce-Hollogne
Tel. +32-4-2397070
Fax +32-4-2397071
Internet: <http://www.mapei.be>
E-mail: mapei@mapei.be
For the Netherlands:
Tel. +31-43-3510498
Fax +31-43-3510499



CROATIA - Mapei Croatia d.o.o.

Visnjevica 18 - 10000 Zagreb
Tel. +385-1-3647789
Fax +385-1-3647787
Internet: <http://www.mapei.com>
E-mail: mapei@mapei.hr



CZECH REPUBLIC - Mapei spol. s r.o.

Smetanova 192 - 77211 Olomouc
Tel. +420-585224580 - Fax +420-585227209
Internet: <http://www.mapei.cz>
E-mail: info@mapei.cz
Distribution centre in Prague



FRANCE - Mapei France SA

Zone Industrielle du Terroir
Avenue Léon Jouhaux, 29 - 31140 Saint Alban
Tel. +33-5-61357305 - Fax +33-5-61357314
Internet: <http://www.mapei.fr>
E-mail: mapei@mapei.fr
Plants in Saint Alban and Montgru
Saint Hilaire



GERMANY - Mapei GmbH

Bahnhofplatz 10 - 63906 Erlenbach
Tel. +49-9372-98950
Fax +49-9372-989548
Internet: <http://www.mapei.de>
E-mail: mailto@mapei.de
Plant in Weferlingen



GREAT BRITAIN - Mapei U.K. Ltd

Mapei House - Steel Park Road - Halesowen
West Midlands B62 8HD
Tel. +44-121-5086970
Fax +44-121-5086960
Internet: <http://www.mapei.com>
E-mail: sales@mapei.co.uk
Plant in Halesowen



GREECE - Mapei Hellas SA

Papadiamantopoulou 24 C - 11528 Athens
Tel. +30-210-7472983
Fax +30-210-7472953
Internet: <http://www.mapei.gr>
E-mail: mapeihellas@mapei.gr



HUNGARY - Mapei Kft

Sport Utca 2 - 2040 Budaörs
Tel. +36-23-501667 - Fax +36-23-501666
Internet: <http://www.mapei.hu>
E-mail: mapei@mapei.hu
Plant in Sósút
Distribution centres in Győr, Kaposvár
and Miskolc



NORWAY - Rescon Mapei AS

Vallsetvegen 6 - 2120 Sagstua
Tel. +47-62-972000 - Fax +47-62-972099
Internet: <http://www.resconmapei.com>
E-mail: post@resconmapei.no
Plant in Sagstua



POLAND - Mapei Polska Spzoo

ul. Gustawa Eiffel'a, 14 - 44-109 Gliwice
Tel. +48-32-7754450
Fax +48-32-7754471
Sales office:
Chalubińskiego Street 8, 00-613 Warsaw
Tel. +48-22-5954200
Fax +48-22-5954202
Internet: <http://www.mapei.pl>
E-mail: info@mapei.pl
Plant in Gliwice



PORTUGAL - Lusomapei S.A.

Business Parque Tejo XXI
Estrada Nacional 1 - Km 19.65, Gelfas
2600-659 Castanheira do Ribatejo
Tel. +351 263 860 360
Fax +351 263 860 369
Internet: <http://www.mapei.pt>
E-mail: geral@mapei.pt
Plant in Anadia



ROMANIA - Mapei Romania SRL

14 Gen. Ion Dragalina
Str. Sector 5 - Bucarest
Tel. +40-21-3117819
Fax +40-21-3117821
Internet: <http://www.mapei.ro>
E-mail: info@mapei.ro



RUSSIAN FEDERATION - ZAO Mapei

Derbenevskaya nab., 7,
building 4, 3-d floor
Moscow 113114 Russian Federation
Tel. +7-495-258-5520
Fax +7-495-258-5521
Internet: <http://www.mapei.ru>
E-mail: info@mapei.ru
Plants in Stupino



SLOVAK REPUBLIC - Mapei SK sro

Nádražná 39, 900 28 Ivánka pri Dunaji
Tel. +421-2-53414 705 / 53414 702
Fax +421-2-5363 2692
Internet: <http://www.mapei.sk>
E-mail: office@mapei.sk



SLOVENIA - Mapei doo

Kočevarjeva 2 - 8000 Novo Mesto
Tel. +386-1-7865050/51
Fax +386-1-7865055
Internet: <http://www.mapei.si>
E-mail: mapei@mapei.si
Distribution centre in Grosuplje



SPAIN - Ibermapei SA

Plaza Cataluña, 20 - 5ª Planta
08002 Barcelona
Tel. +34-93-3435050
Fax +34-93-3024229
Internet: <http://www.mapei.es>
E-mail: ibermapei@ibermapei.es
Plants in Amposta (Tarragona) and
Cabanillas del Campo (Guadalajara)
Distribution centres in Badalona
(Barcelona), Onda (Castellón) and
Marratxi (Mallorca)





SWEDEN - Rescon Mapei AB
Gelbgjutarevägen 6 - 17148 Solna
Tel. +46-8-52509080
Fax +46-8-52509086
Internet: <http://www.mapei.se>
E-mail: info@mapei.se



SWITZERLAND - Mapei Suisse SA
1642 Sorens / FR
Tel. +41-26-9159000 - Fax +41-26-9159003
Internet: <http://www.mapei.ch>
E-mail: info@mapei.ch
Plant in Sorens



UKRAINE - Mapei Ukraina LLC
01014, Città di Kiev
Ulica Strutinskogo, 8 - 8 Etazh.
Tel. +38-044-5024560, 5024563
Fax +38-044-5024566
Internet: <http://www.mapei.ua>
E-mail: mapei@mapei.ua



AUSTRALIA - Mapei Australia Pty Ltd
12 Parkview Drive Archerfield
Brisbane - Queensland 4108
Tel. +61-7-3276 5000
Fax +61-7-3276 5076
Internet: <http://www.mapei.com.au>
E-mail: mapei@mapei.com.au
Plant in Brisbane



CHINA - Mapei Construction Materials (Guangzhou) co. Ltd.
Hong Fu Loi International Building
Rm. 2003-2004, Yan Jiang Zhong Road
Guangzhou P.R. China
Tel. (86-20) 83653489
Fax (86-20) 83653481
E-mail: mapei-gz@mapei-gz.com
Plant in Conghua (Guangzhou)

CHINA - Mapei Construction Materials (Shanghai) co. Ltd.
6, Lane 8999, Hunan Road,
Nanhui District 201314
Shanghai P.R. China
Tel. (86-21) 58180808
Fax (86-21) 58180909
E-mail: mapei-sh@mapei-sh.com
Plant in Nanhui (Shanghai)

HONG KONG S.A.R. - Mapei China Ltd
Suite 15, L22 Office Tower, Langham Place
8 Argyle Street, Mongkok,
Kowloon, Hong Kong
Tel. +852-21486816
Fax +852-25121328
Internet: <http://www.mapei.com.hk>
E-mail: mapei@mapei.com.hk



MALAYSIA - Mapei (Malaysia) Sdn Bhd
PT 521, Batu 23 - Jalan Rawang
Jalan Batang Berjuntai
48000 Rawang - Selangor Darul Ehsan
Tel. +60-3-60935799
Fax +60-3-60915801
Internet: <http://www.mapei.com.sg>
E-mail: mapei@tm.net.my
Plant in Rawang (Kuala Lumpur)



NEW ZEALAND - Mapei New Zealand
30 Fisher Crescent - Mt. Wellington
Auckland, New Zealand
Tel. +64-9-9211994 - Fax +64-9-9211993
Internet: <http://www.mapei.co.nz>
E-mail: info@mapei.co.nz



SINGAPORE - Mapei Far East Pte Ltd
28, Tuas West Road - 638383 Singapore
Tel. +65-68623488
Fax +65-68621012 / 68621013
Internet: <http://www.mapei.com.sg>
E-mail: mapei@mapei.com.sg
Plant in Singapore



UNITED ARAB EMIRATES I.B.S. (Innovative Building Solutions) L.L.C.
P.O. Box 73869, Dubai, UAE
Plant in Dubai



VIETNAM - Mapei Vietnam Ltd.
Plot 8, Street No. 4,
Northern Part of Chu Lai I.Z.
Tam Hiep Commune
Nui Thanh District - Vietnam
Tel. (84-510) 565801-7
Fax (84-510) 565800
Branch in Hanoi:
Tel. (84-4) 9287924-6
E-mail: mapeihn@mapei.com.vn
Branch in Danang:
Tel. (84-511) 3565001
E-mail: mapeidn@mapei.com.vn
Branch in Ho Chi Minh City:
Tel. (84-8) 8206103-4-6
E-mail: mapeihcm@mapei.com.vn
Plant in Chu Lai (Quangnam)

Asia-Oceania

The Americas



ARGENTINA - Mapei Argentina SA
Rondeau 51, 1° floor, Wilde - Buenos Aires
Tel. +54-11-42070009
Fax +54-11-42171088
Internet: <http://www.mapei.com.ar>
Plant in Buenos Aires



CANADA - Mapei Canada Inc
2900, Francis Hughes Avenue
Laval - QUE H7L3J5
Tel. +1-450-6621212
Fax +1-450-6620444
Internet: <http://www.mapei.com>
Plants in Vancouver, Laval,
Maskinongé and Toronto



PUERTO RICO - Mapei Caribe Inc
Road 2 km 26.2 BO. Espinosa
Dorado, Porto Rico 00646
Tel. +1-787-270-4162
Fax +1-787-270-4135
Internet: <http://www.mapei.com>
Plant in Dorado



U.S.A. - Mapei Corp
1144 East Newport Center Drive
Deerfield Beach, Florida 33442
Tel. +1-954-246-8888 / +1-888-300-4422
Fax +1-954-246-8800
Internet: <http://www.mapei.com>
Plants in Phoenix (AZ), Garland (TX),
South River (NJ), Fort Lauderdale (FL),
West Chicago (IL), Fredericksburg (VA),
San Bernardino (CA)
Distribution centre in Anaheim (CA)



VENEZUELA - Mapei de Venezuela CA
Calle Orinco Torre D&D PB Lc 11-12
Urb. Las Mercedes - 1071 Caracas
Tel. +58-212-991-1797 / +58-212-9919423
Fax +58-212-991-7623
Internet: <http://www.mapei.com>
E-mail: mapeivenezuela@hotmail.com
Plant in Caracas

MAPEI SpA

Via Cafiero, 22 - 20158 Milan - Italy

Tel. +39-02-37673.1

Fax +39-02-37673.214

Internet: www.mapei.com

E-mail: mapei@mapei.it



www.mapei.com

MAPEI®

ADHESIVES • SEALANTS • CHEMICAL PRODUCTS FOR BUILDING